

# C SERIES CORN HEADERS



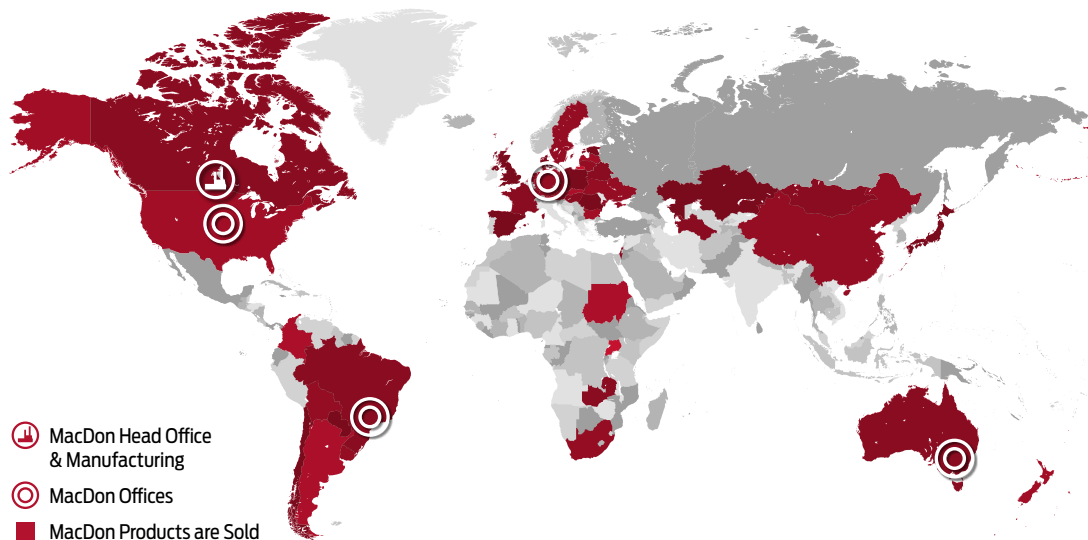
**MacDon**

*The Harvesting Specialists.*

# HARVESTING PERFORMANCE

For over 75 years MacDon has been a world leader in technology, innovation, and manufacturing of high-performance harvesting equipment. Our harvesting history is rooted deep in the rich prairie heritage of Winnipeg, Manitoba, Canada. MacDon products are distributed and supported worldwide from offices in Canada, the United States, Australia, Brazil, and Germany.

MacDon's relentless pursuit of improvement is driven by the desire to make harvesting easier and more productive for farmers. Working directly with producers and custom harvesters in the toughest real-world conditions guides MacDon to pioneer industry-leading innovations like the FlexDraper®. MacDon has a worldwide reputation for excellence as *The Harvesting Specialists* and we are proud to make equipment that help producers harvest the crops that feed the world.



MacDon Industries Ltd.  
680 Moray Street  
Winnipeg, Manitoba, Canada R3J 3S3  
t. (204) 885 5590 f. (204) 832 7749



Scan here for all  
MacDon Global Offices



Connect with us on Social Media!



A close-up, low-angle shot of a MacDon C3808 harrow in a cornfield. The harrow is black with a prominent red and white label. The background is a dense field of tall, dry corn stalks. The harrow's frame and various mechanical components, including a hydraulic cylinder and a PTO shaft, are visible.

**MacDon**

**C3808**



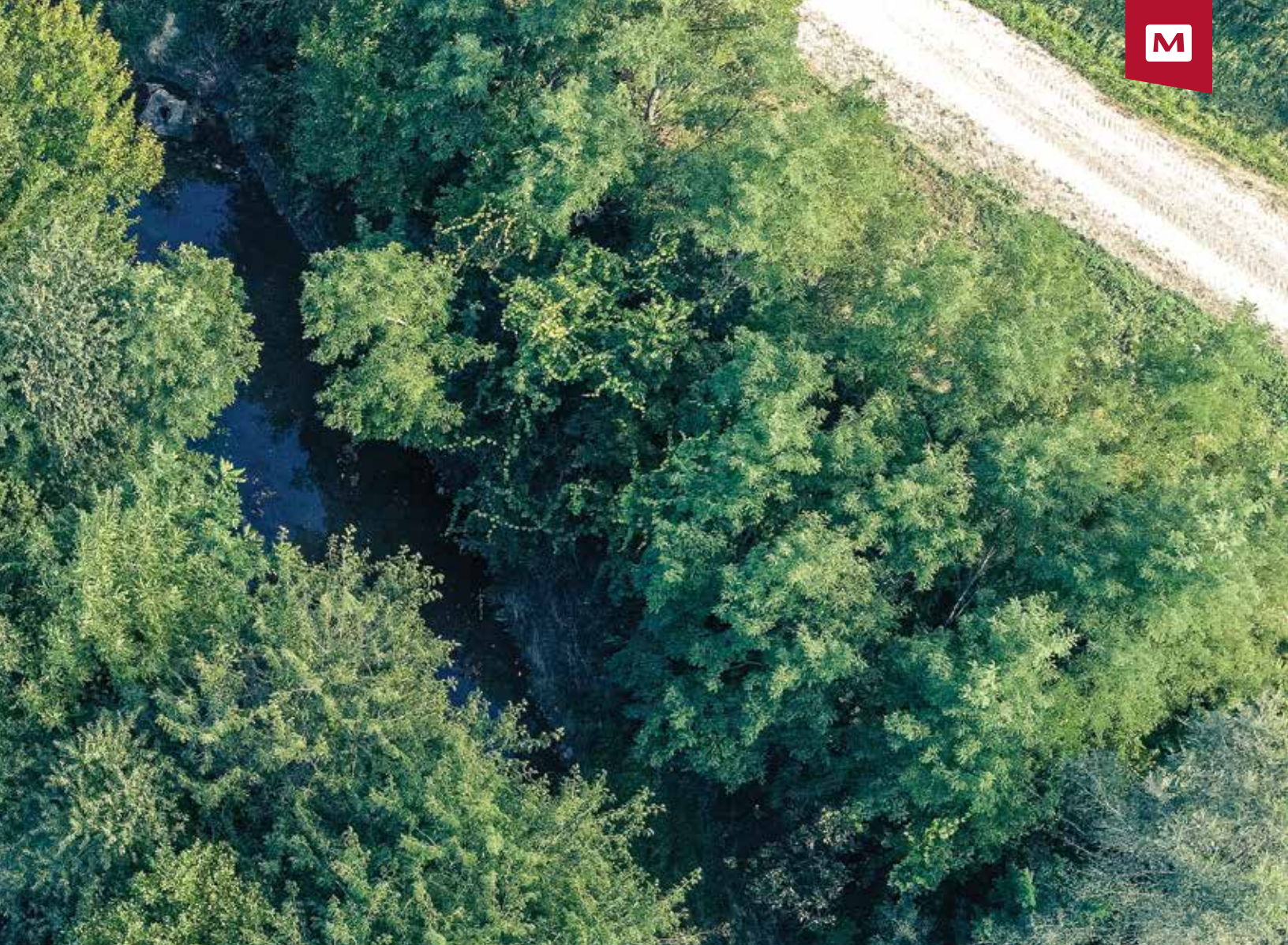
MACDON  
WEBSITE





# SETTING A **NEW** **STANDARD** IN CORN HARVESTING PERFORMANCE

*\*Some products and/or options may not be available in all markets.  
See your MacDon Dealer for availability.*



Corn headers may be a new product for MacDon, but understanding what's essential for harvesting performance isn't. MacDon is bringing over 75 years as ***The Harvesting Specialists*** into the cornfield, and delivering corn harvesting performance and innovation in true MacDon fashion.

With a strong focus on corn agronomy, MacDon C Series headers provide industry-leading residue management thanks to our OctiRoll™ Residue Management System. In a one-pass process, our Corn Headers create well conditioned/chopped and evenly distributed residue, necessary for achieving accurate seed depth and seed placement essential for maximizing successive crop yields.

Strong, light, and fuel efficient, C Series headers have aluminum gearboxes and a compact driveline requiring less power from the combine for operation. Featuring a unique snout design that excels at lifting downed crop, minimizing ear bounce, and following curved rows, the MacDon C Series is ready for your toughest corn harvesting challenges.

Take your corn harvesting performance up a notch with MacDon performance options. Folding headers let you travel with ease from field-to-field during harvest. The rotary end divider option helps to lift downed crop, while stubble stompers help reduce tire or track wear.

All this backed by MacDon's legendary performance and reliability, that's how we're setting a new standard in corn harvesting performance.

C SERIES  
WEBSITE



# THE MACDON C SERIES ADVANTAGE

## ONE-PASS RESIDUE MANAGEMENT

With a strong focus on the agronomy of corn, MacDon C Series headers provide industry-leading residue management. In a one-pass process MacDon's OctiRoll™ Residue Management System creates well conditioned/chopped and evenly distributed residue, necessary for achieving accurate seed depth and seed placement essential for maximizing successive crop yields.

### **A** CRIMPING:

C Series Corn Headers feature MacDon's innovative OctiRoll™. Improving on the traditional snapping roll model, this unique industry-leading design incorporates 4 point-to-point knives and 4 serrated edges, that alternate to cut and crimp the stalk every 7.5 cm (3 in.). The OctiRoll™ cutting/crimping action speeds up the microbial breakdown process, taking less than half the time to decompose over typical corn headers.

### **B** CHOPPING:

Stalks are aggressively pulled through the header and residue is consistently chopped into 5 to 7.5 cm (2 to 3 in.) pieces at harvesting speeds up to 12 km/h (7.5 mph) thanks to the extra 4 serrated blades on each OctiRoll™.

### **C** OPTIMAL STALK TO CHOPPER POSITIONING

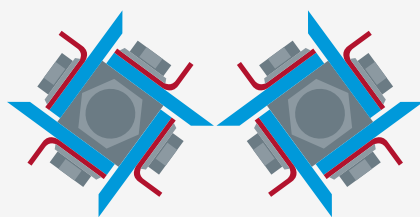
The front-mounted chopper positioned close to the underside of the rolls provides the shortest, most consistent residue size. The OctiRoll™ can then be run closer to the ground to better harvest downed corn while delivering the shortest stubble height possible.

You'll enjoy the direct positive drive from the specially designed high-capacity aluminum gearbox and slip clutch that powers each row unit. Chopper speed is 2800 rpm, and the chopper gearboxes can be easily disconnected row by row as needed.


### **D** UNIQUE SNOOT DESIGN

The ribbed shape strengthens the snout structure and creates less drag allowing the material to flow over it smoothly. Featuring a unique teardrop snout design that excels at lifting downed crop, minimizing ear bounce, and following curved rows, the MacDon C Series is ready for your toughest corn harvesting challenges.





 Crimping  
Edge

 Cutting  
Edge

**OctiRoll™** RESIDUE MANAGEMENT SYSTEM







### STRONG, LIGHT, AND FUEL EFFICIENT



- A light yet robust frame structure and row units reduce weight.
- The reduced frame weight, high-performance OctiRoll™, aluminum gearboxes and compact driveline require less power from the combine resulting in reduced fuel consumption.



### SERIOUS CUTTING PERFORMANCE & INNOVATION



- MacDon's OctiRoll™ Residue Management System features 4 point-to-point knives and 4 additional serrated edges on each OctiRoll™. This feature creates more pinch points on the stalk per revolution of the roll, resulting in less trash intake, stalk slippage, and allows for a more thorough stalk cut, crimping, and chopping process.
- Chopper models feature aluminum stalk chopper gearboxes with large oil volumes to help prevent overheating. The optimized position of the chopping knives relative to the snapping rolls ensures excellent chopping quality even at harvesting speeds up to 12 km/h (7.5 mph).
- Knives can be reversed when the front edge wears to prolong life & reduce operational costs



### EASY MAINTENANCE

- Each front-supported OctiRoll™ uses two sealed double row ball bearings. The grease in the cavity forms a barrier to prevent dirt & debris from contacting the bearing seal. The greasing interval is every 250 hours of operation.



### BUILT TOUGH FOR INCREASED HARVESTING UP-TIME



- The high-performance OctiRoll™ feature 4 hardened carbide knives bolted to each roll shaft for easy replacement.
- The gathering chain drive sprockets feature a unique low profile tooth design that protects the gathering chain should the chain meet an obstruction; this also helps to protect the row unit driveline.



### COMBINE INTERCHANGEABILITY

- MacDon C Series Headers are designed to fit most major brand combines with an easy to install completion package. This multi-brand compatibility and interchangeability mean your investment will hold its value when it's time to update your header.



## C SERIES PERFORMANCE OPTIONS

### A FOLDING CORN HEADERS

Folding headers let you travel with ease from field-to-field during harvest. Go from full width to completely folded in less than two minutes; the folding operates with push-button simplicity from the combine's cab.

### B ROTARY END DIVIDERS

The rotary end divider option helps to pick up downed corn.

### C COLORED SNOOTS & DIVIDERS

Grey snouts and dividers are offered as standard equipment, however, red, green, and yellow are available as a special factory order to match your combine color.

### D STUBBLE STOMPERS

The stubble stomper option helps reduce wear and tear on your tires or tracks.





# SPECIFICATIONS

## C SERIES CORN HEADER SPECIFICATIONS

Europe	North America	Row Spacing	Rows	Chopper	Folding	Operating Width	Weight
C5008		50.8 cm (20 in.)	8	No	No	4.1 m (13 ft. 4 in.)	2202 kg (4855 lbs)
C5008C		50.8 cm (20 in.)	8	Yes	No	4.1 m (13 ft. 4 in.)	2500 kg (5512 lbs)
C5012	C2012	50.8 cm (20 in.)	12	No	No	6.1 m (20 ft.)	3260 kg (7187 lbs)
C5012C	C2012C	50.8 cm (20 in.)	12	Yes	No	6.1 m (20 ft.)	3560 kg (7848 lbs)
C5018	C2018	50.8 cm (20 in.)	18	No	No	9.1 m (30 ft.)	4175 kg (9204 lbs)
C5018C	C2018C	50.8 cm (20 in.)	18	Yes	No	9.1 m (30 ft.)	4480 kg (9877 lbs)
C5508	C2208	55.9 cm (22 in.)	8	No	No	4.5 m (14 ft. 8 in.)	2302 kg (5075 lbs)
C5508C	C2208C	55.9 cm (22 in.)	8	Yes	No	4.5 m (14 ft. 8 in.)	2600 kg (5732 lbs)
C5512	C2212	55.9 cm (22 in.)	12	No	No	6.7 m (22 ft.)	3325 kg (7330 lbs)
C5512C	C2212C	55.9 cm (22 in.)	12	Yes	No	6.7 m (22 ft.)	3630 kg (8003 lbs)
C5518	C2218	55.9 cm (22 in.)	18	No	No	10.1 m (33 ft.)	4919 kg (10845 lbs)
C5518C	C2218C	55.9 cm (22 in.)	18	Yes	No	10.1 m (33 ft.)	5225 kg (11519 lbs)
C6007F		60 cm (23.6 in.)	7	No	Yes	4.2 m (13 ft. 9 in.)	2411 kg (5315 lbs)
C6007CF		60 cm (23.6 in.)	7	Yes	Yes	4.2 m (13 ft. 9 in.)	2570 kg (5666 lbs)
C6009F		60 cm (23.6 in.)	9	No	Yes	5.4 m (17 ft. 9 in.)	3100 kg (6834 lbs)
C6009CF		60 cm (23.6 in.)	9	Yes	Yes	5.4 m (17 ft. 9 in.)	3304 kg (7284 lbs)
C7006		70 cm (27.6 in.)	6	No	No	4.2 m (13 ft. 9 in.)	1997 kg (4403 lbs)
C7006C		70 cm (27.6 in.)	6	Yes	No	4.2 m (13 ft. 9 in.)	2250 kg (4960 lbs)
C7006F		70 cm (27.6 in.)	6	No	Yes	4.2 m (13 ft. 9 in.)	2464 kg (5432 lbs)
C7006CF		70 cm (27.6 in.)	6	Yes	Yes	4.2 m (13 ft. 9 in.)	2600 kg (5732 lbs)
C7008		70 cm (27.6 in.)	8	No	No	5.6 m (12 ft. 4 in.)	2552 kg (5626 lbs)
C7008C		70 cm (27.6 in.)	8	Yes	No	5.6 m (12 ft. 4 in.)	2850 kg (6283 lbs)
C7008F		70 cm (27.6 in.)	8	No	Yes	5.6 m (12 ft. 4 in.)	3019 kg (6656 lbs)
C7008CF		70 cm (27.6 in.)	8	Yes	Yes	5.6 m (12 ft. 4 in.)	3200 kg (7055 lbs)
C7012		70 cm (27.6 in.)	12	No	No	8.4 m (27 ft. 7 in.)	3561 kg (7851 lbs)
C7012C		70 cm (27.6 in.)	12	Yes	No	8.4 m (27 ft. 7 in.)	3950 kg (8708 lbs)

Europe	North America	Row Spacing	Rows	Chopper	Folding	Operating Width	Weight
C7012F		70 cm (27.6 in.)	12	No	Yes	8.4 m (27 ft. 7 in.)	3958 kg (8726 lbs)
C7012CF		70 cm (27.6 in.)	12	Yes	Yes	8.4 m (27 ft. 7 in.)	4230 kg (9326 lbs)
C7506F		76.2 cm (30 in.)	6	No	Yes	4.6 m (15 ft.)	2564 kg (5653 lbs)
C7506CF		76.2 cm (30 in.)	6	Yes	Yes	4.6 m (15 ft.)	2700 kg (5952 lbs)
C7509F		76.2 cm (30 in.)	9	No	Yes	6.9 m (22 ft. 6 in.)	3618 kg (7976 lbs)
C7509CF		76.2 cm (30 in.)	9	Yes	Yes	6.9 m (22 ft. 6 in.)	3822 kg (8426 lbs)
C7506	C3006	76.2 cm (30 in.)	6	No	No	4.6 m (15 ft.)	2097 kg (4623 lbs)
C7506C	C3006C	76.2 cm (30 in.)	6	Yes	No	4.6 m (15 ft.)	2350 kg (5181 lbs)
C7508	C3008	76.2 cm (30 in.)	8	No	No	6.1 m (20 ft.)	2552 kg (5626 lbs)
C7508C	C3008C	76.2 cm (30 in.)	8	Yes	No	6.1 m (20 ft.)	2850 kg (6283 lbs)
C7508F	C3008F	76.2 cm (30 in.)	8	No	Yes	6.1 m (20 ft.)	3069 kg (6766 lbs)
C7508CF	C3008CF	76.2 cm (30 in.)	8	Yes	Yes	6.1 m (20 ft.)	3250 kg (7165 lbs)
C7512	C3012	76.2 cm (30 in.)	12	No	No	9.1 m (30 ft.)	3731 kg (8225 lbs)
C7512C	C3012C	76.2 cm (30 in.)	12	Yes	No	9.1 m (30 ft.)	4120 kg (9083 lbs)
C7512F	C3012F	76.2 cm (30 in.)	12	No	Yes	9.1 m (30 ft.)	4128 kg (9101 lbs)
C7512CF	C3012CF	76.2 cm (30 in.)	12	Yes	Yes	9.1 m (30 ft.)	4400 kg (9700 lbs)
C7516	C3016	76.2 cm (30 in.)	16	No	No	12.2 m (40 ft.)	5060 kg (11155 lbs)
C7516C	C3016C	76.2 cm (30 in.)	16	Yes	No	12.2 m (40 ft.)	5330 kg (11751 lbs)
C8006F		80 cm (31.5 in.)	6	No	Yes	4.8 m (15 ft. 9 in.)	2664 kg (5873 lbs)
C8006CF		80 cm (31.5 in.)	6	Yes	Yes	4.8 m (15 ft. 9 in.)	2800 kg (6173 lbs)
C8008F		80 cm (31.5 in.)	8	No	Yes	6.4 m (21 ft.)	3137 kg (6916 lbs)
C8008CF		80 cm (31.5 in.)	8	Yes	Yes	6.4 m (21 ft.)	3318 kg (7315 lbs)
C9508	C3808	96.5 cm (38 in.)	8	No	No	7.7 m (25 ft. 4 in.)	2950 kg (6504 lbs)
C9508C	C3808C	96.5 cm (38 in.)	8	Yes	No	7.7 m (25 ft. 4 in.)	3248 kg (7161 lbs)
C9512	C3812	96.5 cm (38 in.)	12	No	No	11.6 m (38 ft.)	4080 kg (8995 lbs)
C9512C	C3812C	96.5 cm (38 in.)	12	Yes	No	11.6 m (38 ft.)	4290 kg (9458 lbs)

C SERIES  
WEBSITE





MACDON  
WEBSITE



# MacDon®

*The Harvesting Specialists. [MacDon.com](http://MacDon.com)*

Trademarks of products are the marks of their respective manufacturers and/or distributors. Specifications and options subject to change without notice.  
Products subject to availability. Products featured may include available options. *C Series Corn Headers Brochure - MY2024 - ENG Letter - 02-15-24 Part# 262527*