

**MacDon®** *The Harvesting Specialists.*



## ***Performance Options***

**M2 & M1 Series Windrowers**







# M2 & M1 Series Windrowers

MacDon

## More Power. More Intuitive.

MacDon Windrowers have set a standard that's hard to beat for innovation, performance, and speed. The M2 Series Windrowers top this by adding more power and a refined, intuitive operator experience to your next harvest. It starts with two new stage 5 Cummins turbo diesel engine options, delivering more power, improved efficiency, and easier maintenance. Next, MacDon's HarvestTouch™ Display provides simple control with an intuitive touchscreen interface to keep you productive all day. Plus, all the usual goodies that make MacDon Windrowers a cut above, like Dual Direction Steering, 360 Degree Night Vision, CrossFlex™ Suspension, and more. ***Get more all harvest long with MacDon M2 Windrowers.***



## TABLE OF CONTENTS

Center-link Alignment Kit	4
Swath Compressor	5
Lighting Upgrade	6
LH Drive Headlights	7
Double Windrow Attachment (DWA)	8
DWA Shut-off Kit	9
Disc Drive Flat Face Quick Couplers	10
Draper and Auger Conversion Kit	11
Heavy Header Float Booster Spring	12
Heavy Header Float Booster Doubler Kit	13
Rear Counterweight (Ballast) Package 1 & 2	14
Rear Counterweight (Ballast) Package – EU M1170 NT & M1170 NT5	15
Weight Box without Harness	16
Wiring Harness & Hitch Pin for Weight Box	17
Weight Box – Export (w/o concrete)	18
Weight Box – Narrow Transport (w/o concrete)	19
High Debris Cooler Intake	20
Engine Coolant Heater (Block Heater)	21
EZ-Pilot Ready (MY2016-2018)	22
Integrated Autopilot Ready (MY2016-2018)	23
Trimble GFX Display (MY2017-2018)	24
EZ-Pilot Ready (MY2019-2022)	25
Integrated Autopilot Ready (MY2019-2022)	26
Trimble GFX Display (MY2019-2022)	27
On Wheel Electric Motor Drive Ready Kit (MY2023 & Newer)	28
Integrated Autopilot Ready (MY2023 & Newer)	29

# Center-link Alignment Kit

MacDon®

## WHAT IT DOES

The Center Link Self-Alignment kit adjusts vertical position of the center link from the operators station when attaching or detaching a header.

## FEATURES/BENEFITS

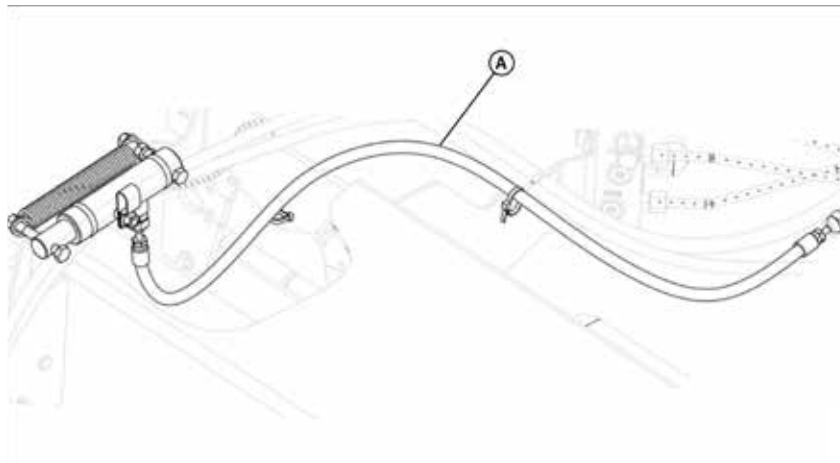
» Allows for hands free connection of hydraulic center-link from the cab.

## IDEAL CROP CONDITIONS

Any crop condition.

## IDEAL FIELD CONDITIONS

Any field condition.



## SPECIFICS

### Compatible With:

M2170, M2260, M2170 NT, M1170 NT5, M1240

### Bundle #:

B6617

### Weight:

3.03 kg (6.7 lbs)

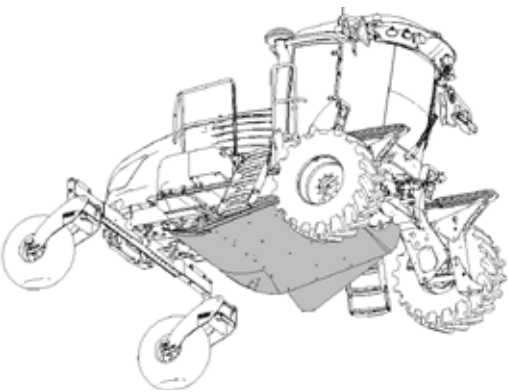
### Dealer Set-up Time:

1.2 hours

### Instruction #:

214701

# Swath Compressor



### WHAT IT DOES

MacDon's patented Swath Compressor creates a smooth, even slope that gently compresses and forms loose bushy swaths into perfect windrows every time. Compressor adjustment happens from the cab and is displayed on-screen. This control can also be programed into the Windrower's One-Touch-Return functions. Best of all, when you switch the Dual Direction to road mode, the MacDon Swath Compressor lifts up under the frame for quick unobstructed transport

### IDEAL CROP CONDITIONS

Any canola or light bushy crop where anchoring the windrow to the stubble is desired

### IDEAL FIELD CONDITIONS

Any field condition.

### SPECIFICS

**Compatible With:**

M2170, M2260, M1170, M1240

**Bundle #:**

B6995

**Weight:**

232.74 kg (513 lbs)

**Dealer Set-up Time:**

5 hours

**Manual #:**

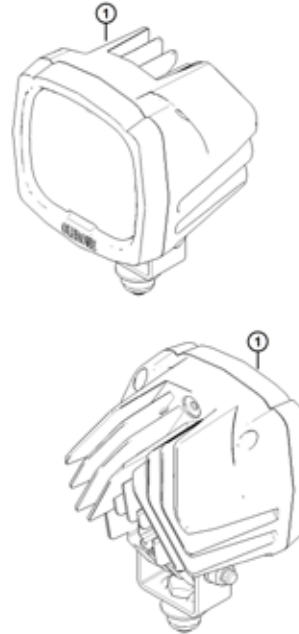
215953

### FEATURES/BENEFITS

MacDon Swath Compressor	Traditional Rollers
MacDon's swath compressors glide over the cut crop gradually and gently compresses the swath into formation.	Even though they spin, traditional rollers have a narrow band of contact causing them to aggressively crash into the crop as they form the swath.
Factory ordered, excellent integration with the machine controls and hydraulics.	Not available to order from the factory.
Works with M1/M2 One-Touch-Return preset controls.	This feature is not available.
Height is adjusted and displayed in the cab on the Harvest Performance Tracker screen.	This feature is not available.
Mounted under the machine does not restrict the use of the rear swath light during operation.	Rear mounted off the frame restricts the use of rear swath light during operation.
Lifts up under the frame for clear visibility during engine forward transport.	Rear mount decreases visibility during engine forward transport.
Adjustable wings on either side of the swath compressor allow it to be set wider or narrower, the angle of the unit can also be adjusted.	Not adjustable for overall width, fixed angle and profile.

# Lighting Upgrade

MacDon



## SPECIFICS

### Compatible With:

M2170 & M2260 (Base Cab Option), M1170, M1240

### Bundle #:

B6889

### Weight:

7.4 kg (16.4 lbs)

### Dealer Set-up Time:

3 hours

### Instruction #:

215304

Includes quantity 8 lights

## WHAT IT DOES

The lighting upgrade kit replaces the standard halogen work lights with LED lights.

This upgrades the standard cab lighting to match deluxe cab.

## FEATURES/BENEFITS

» Improved lighting/visibility when operating after dark.

## IDEAL CROP CONDITIONS

Any crop condition.

## IDEAL FIELD CONDITIONS

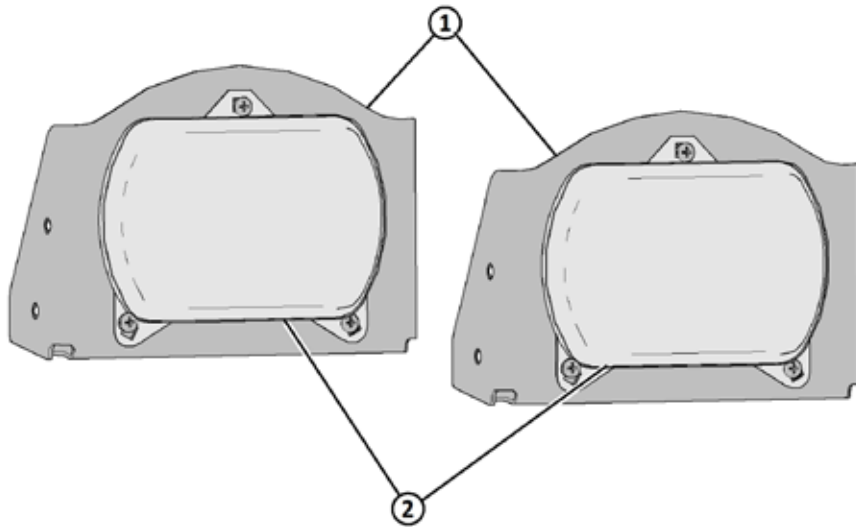
Any field condition.

## Notes:

Not compatible with M1170 NT & M1170 NT5.  
Standard in Deluxe Cab package.

# LH Drive Headlights

**MacDon**



## WHAT IT DOES

The Left Drive Headlights kit is for MacDon M1 and M2 Series Windrowers used in countries where driving on left side of the road is the convention. The kit replaces the engine forward headlights on the windrower.

## FEATURES/BENEFITS

- » The headlights are angled so that they aim away from oncoming traffic when the windrower is driven on roadways in left-driving countries.

## IDEAL CROP CONDITIONS

Any crop condition.

## IDEAL FIELD CONDITIONS

Any field condition.

## SPECIFICS

### Compatible With:

M2170, M2170 NT, M2260, M1170, M1240, M1170 NT, M1170 NT5

### Bundle #:

B9001

### Weight:

13.1 kg (6 lbs)

### Dealer Set-up Time:

15 min

### Instruction #:

215595

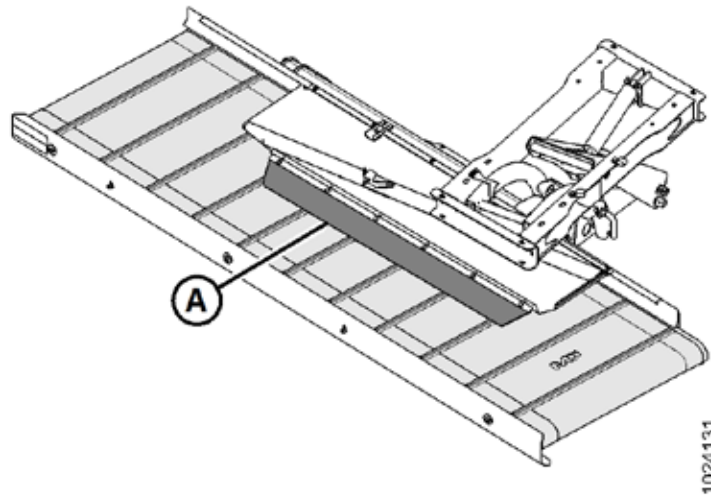
## Notes:

*Recommended for UK, Australia, New Zealand, and South Africa.*



# Double Windrow Attachment (DWA)

MacDon



## WHAT IT DOES

MacDon's double windrow attachment feature lets you lay up to 48' (14.6m) of crop in a single windrow. This is ideal for today's large forage harvesters and can translate into significant time and fuel savings for producers who employ this feature.

The DWA kit includes an additional draper belt conveyor under the windrower. Cut crop is now conveyed out the side instead of under the windrower.

## FEATURES/BENEFITS

- » Double or Triple windrow placement.
- » DWA height and draper speed are controlled from the cab.

## IDEAL CROP CONDITIONS

Any crop condition.

## IDEAL FIELD CONDITIONS

Any field condition.

## SPECIFICS

### Compatible With:

M2170, M2260, M1170, M1240, A Series Auger Header, R85 Rotary Disc Headers, R216 Rotary Disc Headers

### Bundle #:

C2070

### Weight:

252 kg (554 lbs)

### Dealer Set-up Time:

5 hours

### Manual #:

215937

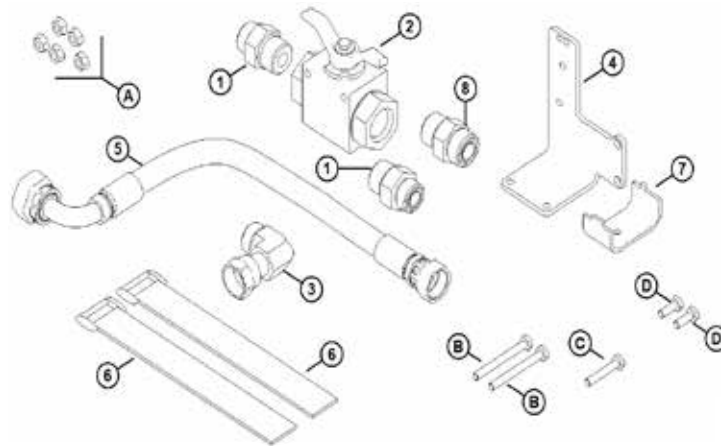
## Notes:

*Not compatible with M1170 NT, M1170 NT5, M2170 NT, R216 Grass Seed Special or R1 Series Rotary Headers.*



# DWA Shut-off Kit

MacDon



## WHAT IT DOES

If a DWA has been installed on an M1 or M2 Series Windrower configured for both rotary disc and draper headers, it can only be used in conjunction with the rotary header. If the Operator wishes to use a draper header on an M1 Windrower with this configuration, the DWA draper must first be shut off, which requires this DWA Shut-Off kit.

## FEATURES/BENEFITS

- » Allows the operator to utilize different header types on their M1 or M2 Series Windrower.

## IDEAL CROP CONDITIONS

Any crop condition.

## IDEAL FIELD CONDITIONS

Any field condition.

## SPECIFICS

### Compatible With:

M2170, M2260, M1170, M1240

### Bundle #:

B9020

### Weight:

2.3 kg (5 lbs)

### Dealer Set-up Time:

30 min

### Instruction #:

214491

## Notes:

Not compatible with M1170 NT, M1170 NT5 and M2170 NT.

# Disc Drive Flat Face Quick Couplers



## WHAT IT DOES

The Hydraulic Quick Coupler kit allows for fast connect and disconnect of hydraulic hoses between a MacDon R85 or R216 Rotary Disc Header and an M1 or M2 Series Windrower.

## FEATURES/BENEFITS

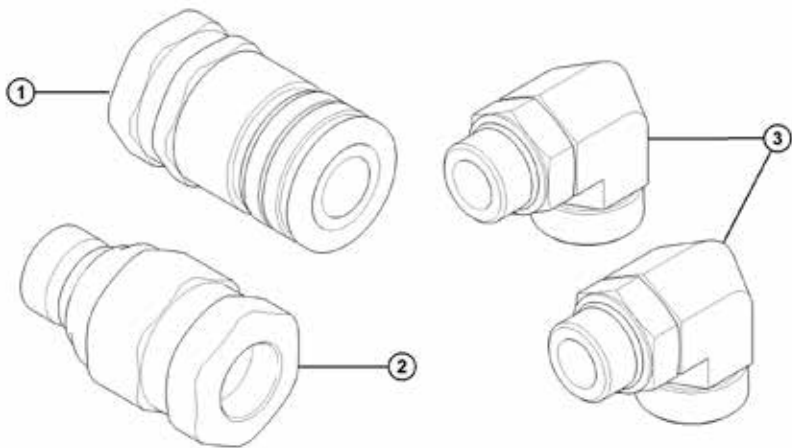
» Allows for faster header connection when switching headers.

## IDEAL CROP CONDITIONS

Any crop condition.

## IDEAL FIELD CONDITIONS

Any field condition.



## SPECIFICS

### Compatible With:

	M1170/M1170 NT and M2170/M2170 NT	M1240 and M2260 Rotary Disc Ready	M1240 and M2260 Rotary, Draper, and Auger Ready
R216	N/A	2x B6277	1x B6277
R113 SP	Standard	Standard	Standard

### Bundle #:

B6277

### Dealer Set-up Time:

15 min

### Weight:

2.28 kg (5.5 lbs)

### Instruction #:

214102

## Notes:

Disc only M1240's and M2260's are factory configured for hard plumb fittings.  
M1170, M2170, M1170 NT, M1170 NT5, and M2170 NT are factory configured for draper/auger compatibility.

# Draper and Auger Conversion Kit

**MacDon**



## WHAT IT DOES

The Draper and Auger Conversion kit is used to adapt a rotary disc-configured M1240 or M2260 Windrower so that it can also be used with a draper header or auger header.

## FEATURES/BENEFITS

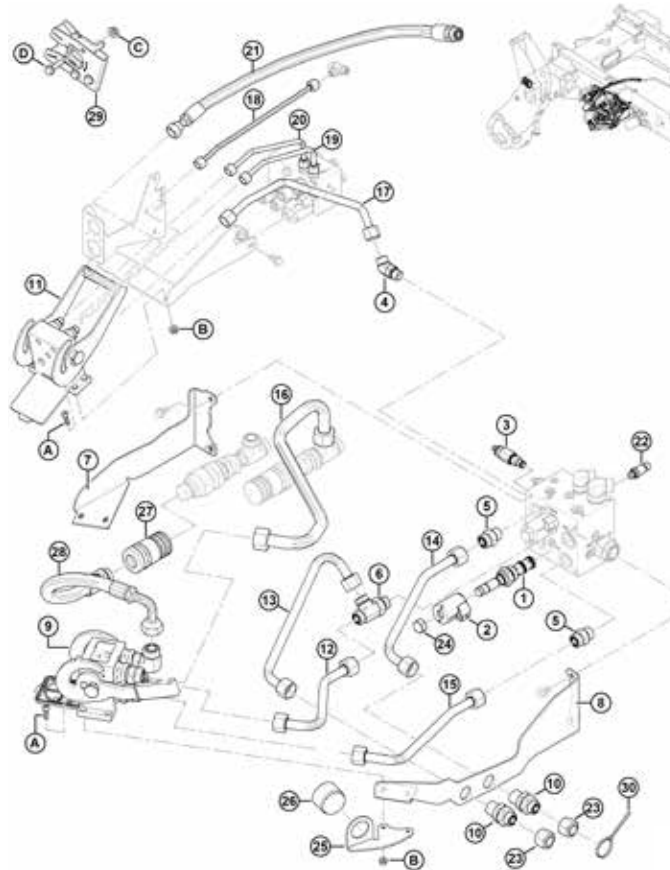
» Allows the operator to utilize different header types on their M1 or M2 windrower.

## IDEAL CROP CONDITIONS

Any crop condition.

## IDEAL FIELD CONDITIONS

Any field condition.



## SPECIFICS

### Compatible With:

M2260, M1240

### Bundle #:

B5999

### Weight:

218.6 kg (482 lbs)

### Dealer Set-up Time:

6 Hours

### Instruction #:

147822



# Heavy Header Float Booster Spring

MacDon



## WHAT IT DOES

The Heavy Header Float Booster Spring kit adds a third external spring to each side of the windrower.

## FEATURES/BENEFITS

- » Provides additional header floatation needed for larger headers.
- » Increases the float capacity of select M1 and M2 Series Windrowers and D1XL Series Header configurations.
- » The kit includes two small-diameter external booster springs (one for each side of the windrower) and mounting brackets/hardware.

## IDEAL CROP CONDITIONS

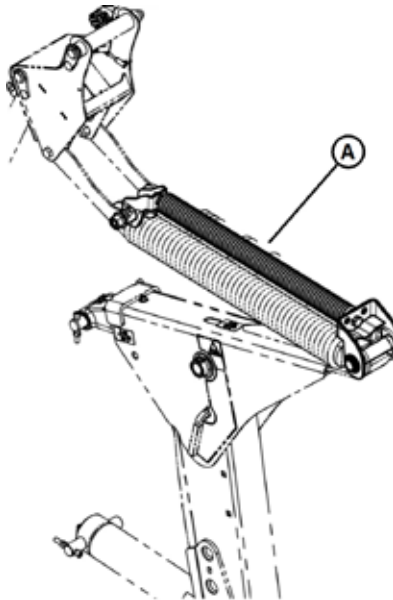
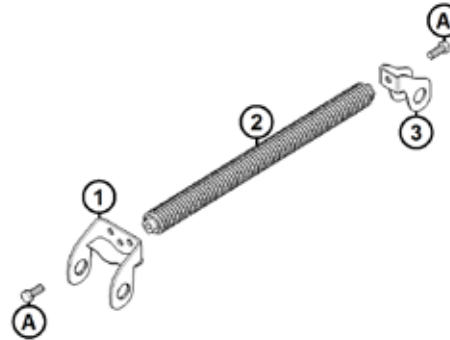
Any crop condition.

## IDEAL FIELD CONDITIONS

Any field condition.

### Notes:

Please refer to price list for float spring requirements for all sizes and configurations. Customers will need to check with their MacDon dealer.



## SPECIFICS

### Compatible With:

M2170, M2170 NT, M2260, M1170, M1170 NT, M1170 NT5, M1240

### Bundle #:

B6047

### Weight:

29.3 kg (64.4 lbs)

### Dealer Set-up Time:

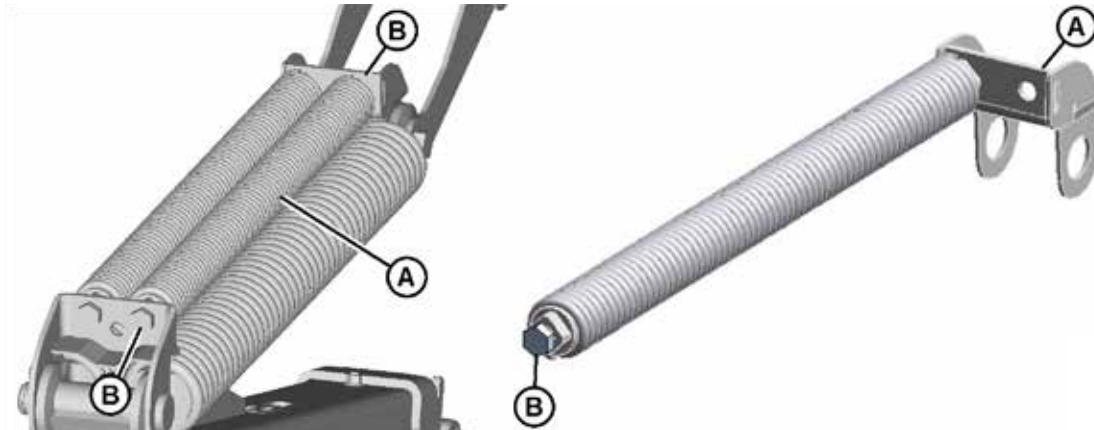
1.5 Hours

### Instruction #:

147825

# Heavy Header Float Booster Doublor Kit

MacDon®



## WHAT IT DOES

The Heavy Header Float Booster Doublor kit provides one additional small-diameter external booster spring, mounting brackets/ hardware, and a link stopper plate for each side of the windrower.

## FEATURES/BENEFITS

- » This kit increases the float capacity of certain M1 and M2 Series Windrowers with selected DIXL Series Headers.
- » After installing this kit, your windrower will have two external booster springs on each side.

## IDEAL CROP CONDITIONS

Any crop condition.

## IDEAL FIELD CONDITIONS

Any field condition.

## SPECIFICS

### Compatible With:

M2170, M2260, M1170, M1240

### Bundle #:

B6106

### Weight:

16.17 kg (35.7 lbs)

### Dealer Set-up Time:

1 Hour

### Instruction #:

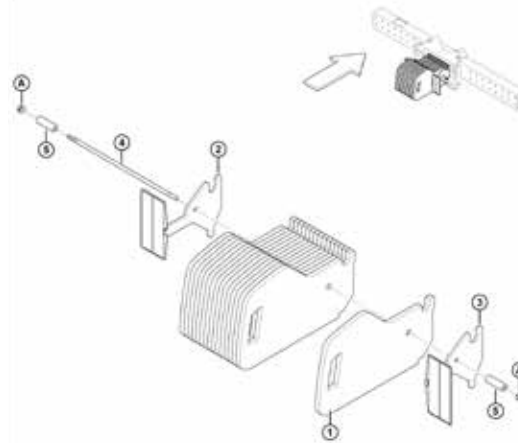
147826

## Notes:

For use on M1 and M2 windrowers with a D145 XL or D245 (export) that has Transport. UCA, and Vertical Knives installed.  
Used in conjunction with B6047

# Rear Counterweight (Ballast) Package 1 & 2

**MacDon**



## WHAT IT DOES

Provides rear ballast for the windrower that is required for larger draper headers. The kit comes with eight counterweights totaling 163 kg (360 lbs). Each additional kit of B6054 adds 163kg (360 lbs).

## FEATURES/BENEFITS

» Improved performance and stability with larger headers.

## IDEAL CROP CONDITIONS

Any crop condition.

## IDEAL FIELD CONDITIONS

Any field condition.

## SPECIFICS

### Compatible With:

M2170, M2260, M1170, & M1240

### Bundle #:

B6053 (required), B6054 (up to two can be added)

### Weight:

163 kg (360 lbs)

### Dealer Set-up Time:

30 min

### Instruction #:

147752

## Notes:

*Not compatible with M1170 NT or M1170 NT5. The M1 and M2 Series Windrowers will hold a maximum of 24 counterweights totaling 490 kg (1080 lbs).*



Rear Counterweight (Ballast) Package

EU M1170 NT & M1170 NT5

MacDon



WHAT IT DOES

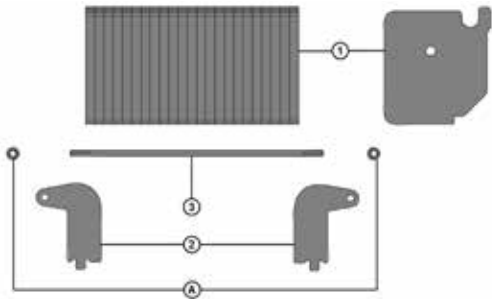
Provides rear ballast for the windrower that is required for larger draper headers.

FEATURES/BENEFITS

» Improved performance and stability with larger headers.

Notes:

The Rear Counterweight kit comes with 24 counterweights totaling 163 kg (360 lbs) and all required hardware.



IDEAL CROP CONDITIONS

Any crop condition.

IDEAL FIELD CONDITIONS

Any field condition.

SPECIFICS

Compatible With:

M2170 NT, M1170 NT, M1170 NT5

Bundle #:

B9070

Weight:

490 kg (1080 lbs)

Dealer Set-up Time:

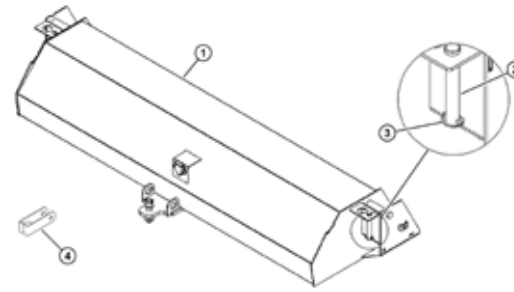
30 min

Instruction #:

147752

# Weight Box without Harness

MacDon



## WHAT IT DOES

A weight box is required when towing a header behind the windrower.

A weight box is also recommended when roading a windrower with no header attached.

It attaches to the lift arms of the windrower, between the windrower and header (or trailer).

It provides weight to the drive tires of the windrower and improves traction.

## FEATURES/BENEFITS

» Allows for safe, efficient road transport of the windrower and header to and from fields.

## IDEAL CROP CONDITIONS

Any crop condition.

## IDEAL FIELD CONDITIONS

Any field condition.

## Notes:

A Weight Box Wiring Harness kit (MD #B6048) is also required when using a weight box on an M1 or M2 series windrower. Not compatible with M1170 NT, M1170 NT5 or M2170 NT.

## SPECIFICS

### Compatible With:

M2170, M2260, M1170, M1240

### Bundle #:

B5238

### Weight:

1089 kg (2400 lbs)

### Dealer Set-up Time:

N/A

### Instruction #:

Refer to Windrower Operators Manual

# Wiring Harness & Hitch Pin for Weight Box

MacDon



## WHAT IT DOES

A weight box, hitch pin, and wiring harness are required any time the windrower is used to tow a header. This kit provides the Wiring Harness and Hitch Pin.

## FEATURES/BENEFITS

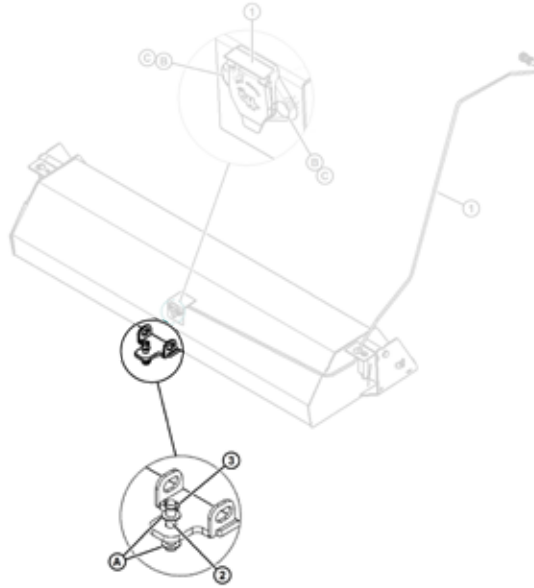
- » Allows for safe, efficient road transport of the windrower and header to and from fields.

## IDEAL CROP CONDITIONS

Any crop condition.

## IDEAL FIELD CONDITIONS

Any field condition.



## SPECIFICS

### Compatible With:

M2170, M2260, M1170, M1240, M2170 NT, M1170 NT

### Bundle #:

B6048

### Weight:

1 kg (2 lbs)

### Dealer Set-up Time:

15 min

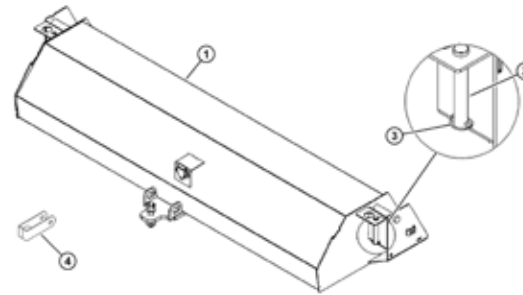
### Instruction #:

147868



# Weight Box / Export (w/o concrete)

MacDon



## WHAT IT DOES

A weight box is required when transporting a header behind the windrower. It attaches to the lift arms of the windrower, between the windrower and header (or trailer). It provides weight to the drive tires of the windrower and improves traction.

## FEATURES/BENEFITS

» Allows for safe, efficient road transport of the windrower and header to and from fields.

## IDEAL CROP CONDITIONS

Any crop condition.

## IDEAL FIELD CONDITIONS

Any field condition.

## SPECIFICS

### Compatible With:

M2170, M2260, M1170, M1240

### Bundle #:

B5240

### Weight:

158 kg (348 lbs)

### Dealer Set-up Time:

2.5 hours to prepare and fill the weight box and approximately 48 for the concrete to set.

### Instruction #:

169280

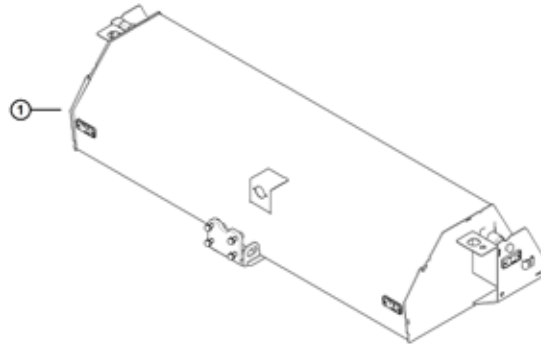
## Notes:

Requires approximately 0.43 m<sup>3</sup> (0.52 yd<sup>3</sup>) of structural-grade concrete.

A Weight Box Wiring Harness kit (MD #B6048) is also required when using a weight box on an M1 or M2 series windrower. Not compatible with M1170 NT, M1170 NT5 or M2170 NT.

# Weight Box / Narrow Transport (w/o concrete)

MacDon



## WHAT IT DOES

A narrow weight box is required when transporting a header behind an M1170 NT or M1170 NT5 windrower.

It attaches to the lift arms of the windrower, between the windrower and header (or trailer).

It provides weight to the drive tires of the windrower and improves traction.

## FEATURES/BENEFITS

» Allows for safe, efficient road transport of the windrower and header to and from fields.

## IDEAL CROP CONDITIONS

Any crop condition.

## IDEAL FIELD CONDITIONS

Any field condition.

## SPECIFICS

### Compatible With:

M2170, M2260, M1170 NT, M1170 NT5

### Bundle #:

B6974

### Weight:

91.4 kg (201.5 lbs)

### Dealer Set-up Time:

2.5 hours to prepare and fill the weight box and approximately 48 for the concrete to set.

### Instruction #:

215580

## Notes:

Requires approximately  $0.43 \text{ m}^3$  ( $0.52 \text{ yd}^3$ ) of structural-grade concrete.

A Clevis Style Hitch Assembly (MD# 346207) and Wiring Harness for Weight Box – ISO (MD# B9052) are also required when using a weight box on an M1170 NT, M1170 NT5, M1270 NT windrower.

# High Debris Cooler Intake

**MacDon**



## WHAT IT DOES

The High Debris Cooler Intake kit contains air intake ducts designed to pull cooling system air from a less debris-prone area.

## FEATURES/BENEFITS

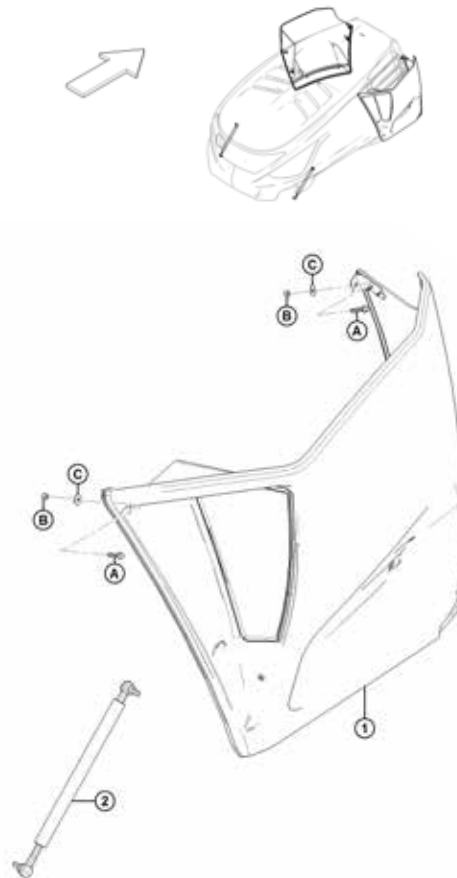
» Improved performance in high debris, hot temperature conditions.

## IDEAL CROP CONDITIONS

Any crop condition.

## IDEAL FIELD CONDITIONS

Any field condition.



## SPECIFICS

### Compatible With:

M2170, M2170 NT, M2260, M1170, M1170 NT, M1170 NT5, M1240

### Bundle #:

B6055

### Weight:

21 kg (46 lbs)

### Dealer Set-up Time:

30 min

### Instruction #:

147859



# Engine Coolant Heater (*Block Heater*)

**MacDon**



## WHAT IT DOES

In cold weather a coolant heater will help when starting the engine.

## FEATURES/BENEFITS

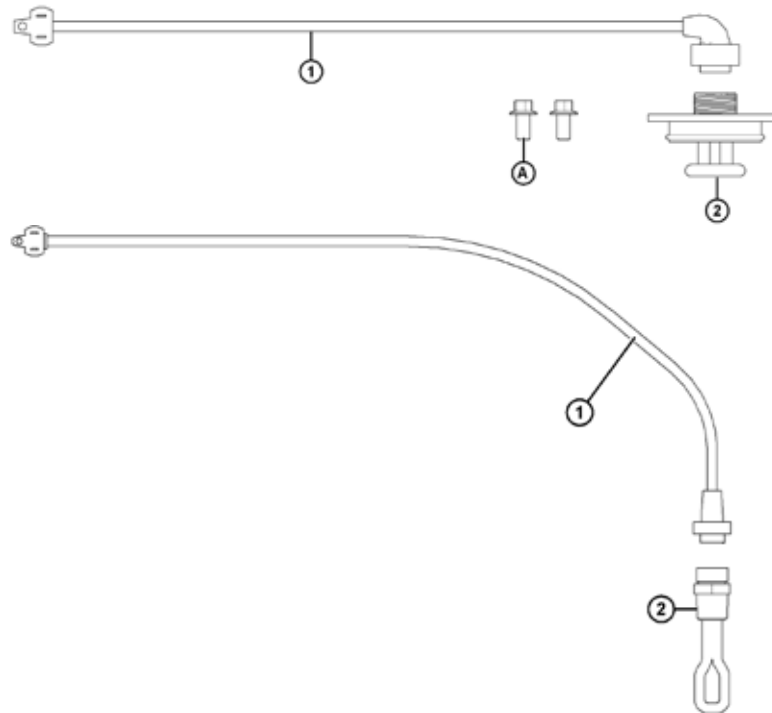
» Easier engine starts in cold weather.

## IDEAL CROP CONDITIONS

Any crop condition.

## IDEAL FIELD CONDITIONS

Any field condition.



## SPECIFICS

### Compatible With:

M2170, M2170 NT, M2260, M1170, M1170 NT, M1170 NT5, M1240

### Bundle #:

B6979 for M1170 & M1170 NT, M1170 NT5, M2170 NT  
B6980 for M1240, M2260

### Weight:

1 kg (2 lbs)

### Dealer Set-up Time:

1 hour

### Instruction #:

215302 (M1170, M1170 NT, M2170 NT)  
215303 (M1240, M2260)

# EZ-Pilot Ready (MY2016-2018)

**MacDon**



## WHAT IT DOES

The MacDon EZ-Pilot® Ready kit is used to prepare an M1 Series Self-Propelled Windrower for use with the Trimble® EZ-Pilot® assisted steering system. The EZ-Pilot® steering system and display must be purchased separately from a Dealer.

## FEATURES/BENEFITS

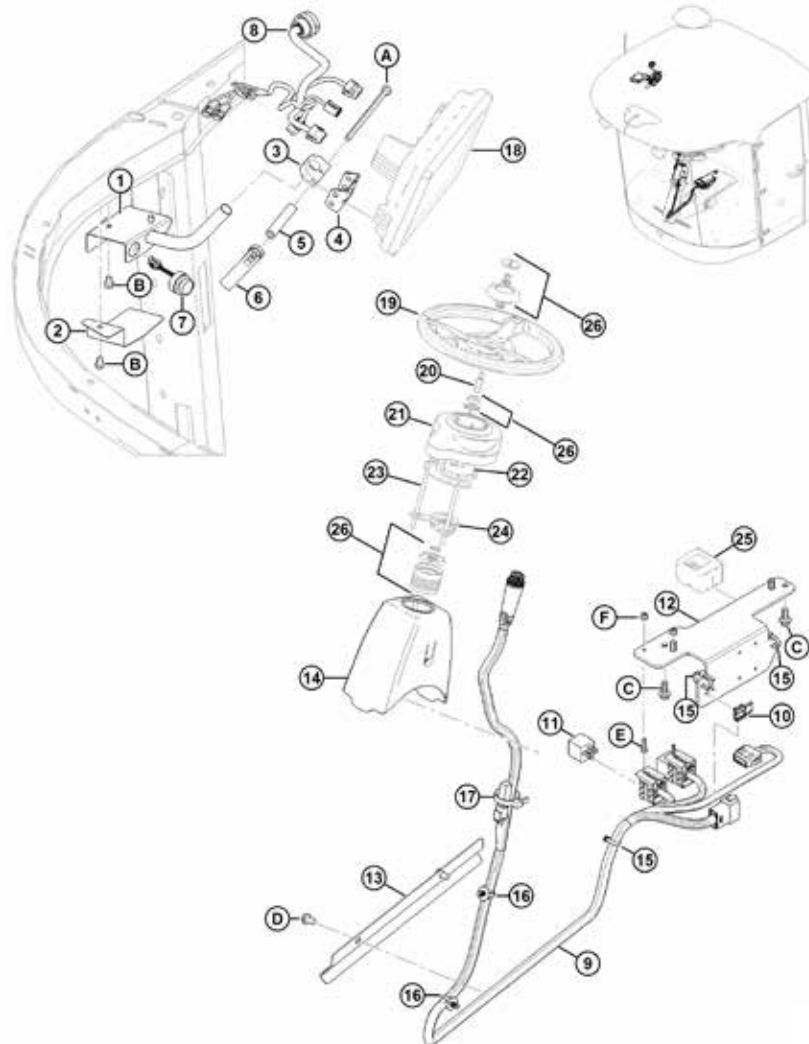
» Allows for use of guidance assisted steering.

## IDEAL CROP CONDITIONS

Any crop condition.

## IDEAL FIELD CONDITIONS

Any field condition.



## SPECIFICS

### Compatible With:

M1170, M1240

### Bundle #:

B5996

### Weight:

2.3 kg (5 lbs)

### Dealer Set-up Time:

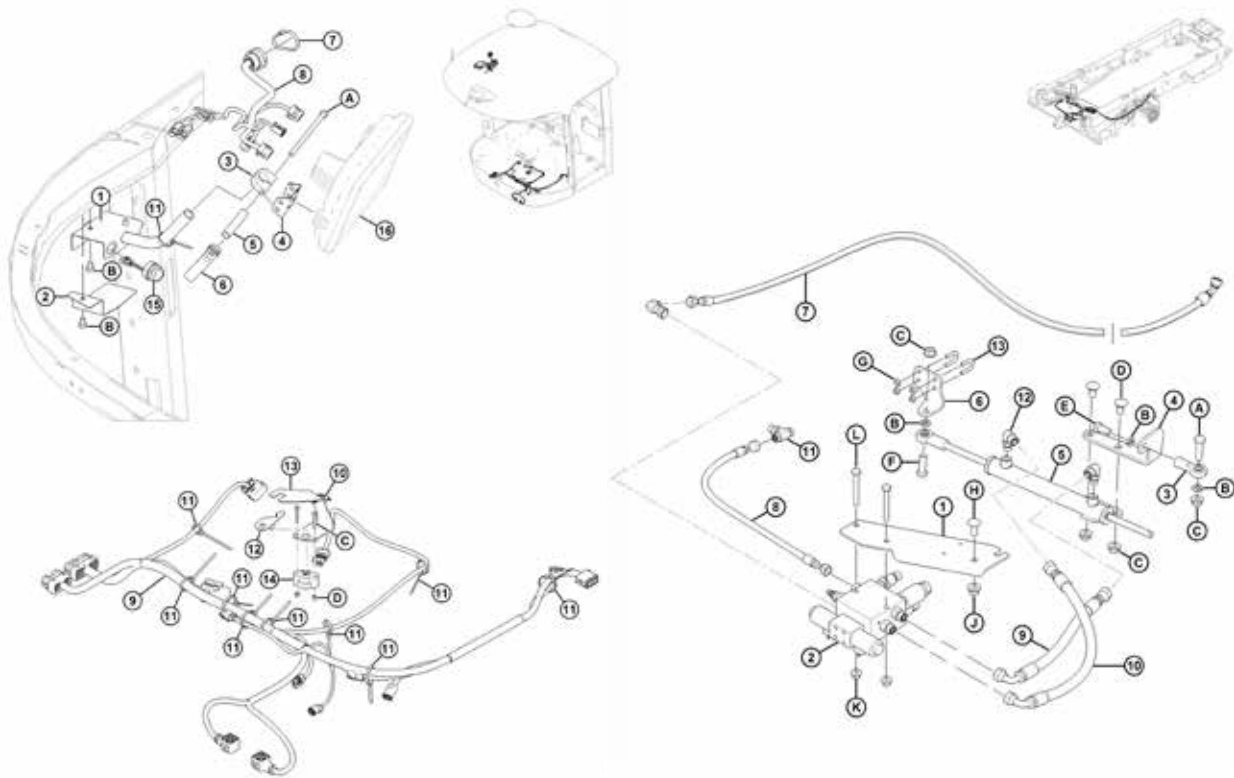
1 hour

### Instruction #:

147853

# Integrated Autopilot Ready (MY2016-2018)

MacDon



## WHAT IT DOES

The MacDon Trimble® Autopilot™ Ready kit is required on M1 Series Windrowers if installing the Trimble® Autopilot™ system.

## FEATURES/BENEFITS

» Allows for use of guidance assisted steering.

## IDEAL CROP CONDITIONS

Any crop condition.

## IDEAL FIELD CONDITIONS

Any field condition.

## Notes:

EZ Pilot Ready Kit MD# B5996 required for proper operation. The Nav II Relay kit (MD #209585) is also required if installing a Nav II controller. The relay kit is not required if installing a Nav III controller.

## SPECIFICS

### Compatible With:

M1170, M1240

### Bundle #:

B5995

### Weight:

### Dealer Set-up Time:

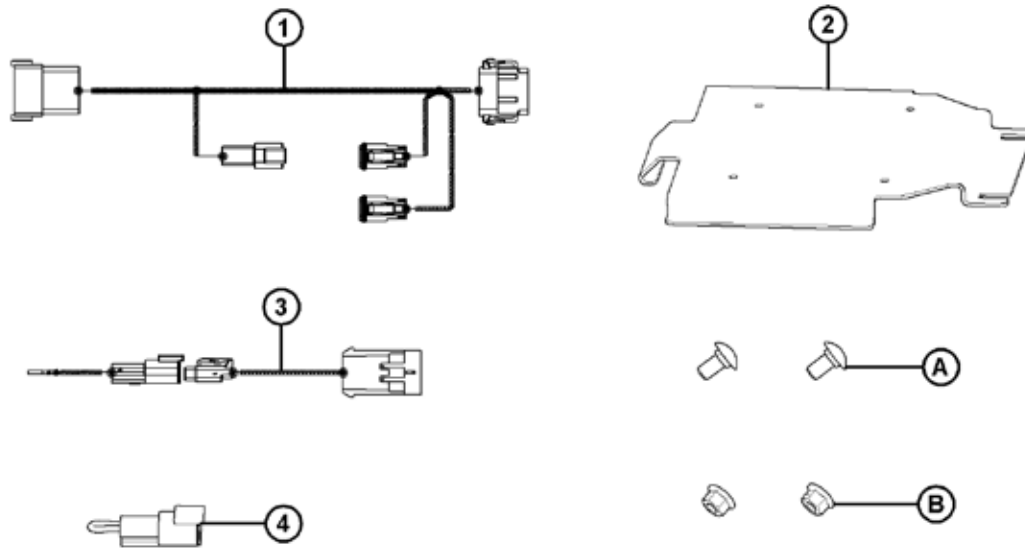
7 hours

### Instruction #:

147856

# Trimble GFX Display (MY2017-2018)

MacDon



## WHAT IT DOES

The MacDon Trimble GFX kit is designed to allow the installation and interface of the GFX (350/750) displays and NAV 500/900 antenna controllers to the existing GPS roof harness on M1 Series Windrowers for Model Years 2017 - 2018.

## FEATURES/BENEFITS

» Allows for use of guidance assisted steering.

## IDEAL CROP CONDITIONS

Any crop condition.

## IDEAL FIELD CONDITIONS

Any field condition.

## Notes:

The MacDon interface harness (MD #309035) and CAN terminator jumper harness (MD #309043) are required to connect the GFX display and NAV 500/900 to the existing GPS factory installed harness via the MacDon display harness (MD #209411) contained in both the EZ-Pilot® Ready kit (MD #B5996) and the Integrated Autopilot™ kit (MD #B5995). Once installed, the Trimble® GFX kit (MD #B9004) allows the GFX/NAV 900 components to interface with the EZ Pilot® (on wheel electric) and the hydraulic integrated steering systems.

## SPECIFICS

### Compatible With:

M1170, M1240

### Bundle #:

B9004

### Weight:

### Dealer Set-up Time:

1 hour

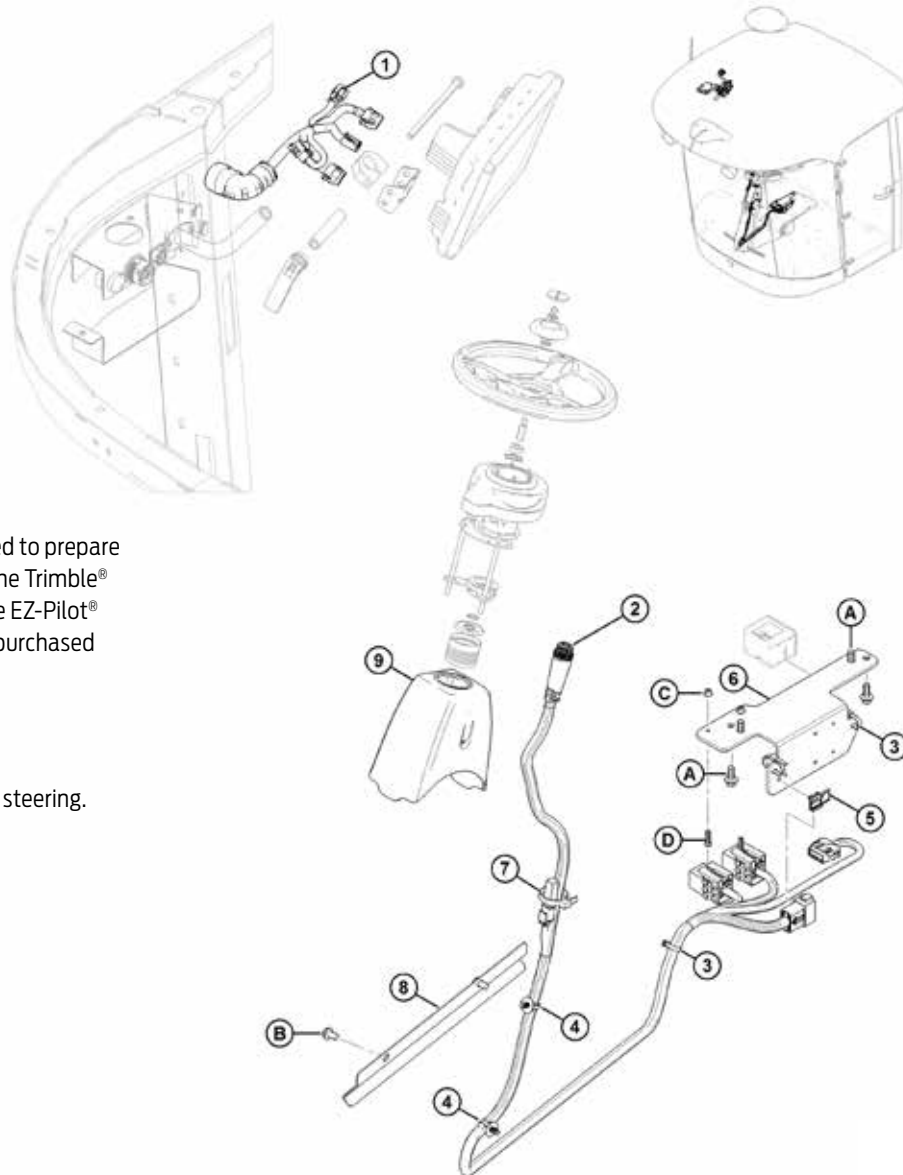
### Instruction #:

215482



# EZ-Pilot Ready (MY2019-2022)

**MacDon**



## WHAT IT DOES

The MacDon EZ-Pilot® Ready kit is used to prepare an M1 Series Windrower for use with the Trimble® EZPilot® assisted steering system. The EZ-Pilot® steering system and display must be purchased separately from a Dealer.

## FEATURES/BENEFITS

» Allows for use of guidance assisted steering.

## IDEAL CROP CONDITIONS

Any crop condition.

## IDEAL FIELD CONDITIONS

Any field condition.

## SPECIFICS

### Compatible With:

M1170, M1170 NT, M1170 NT5, M1240

### Bundle #:

B6602

### Weight:

2.3 kg (5 lbs)

### Dealer Set-up Time:

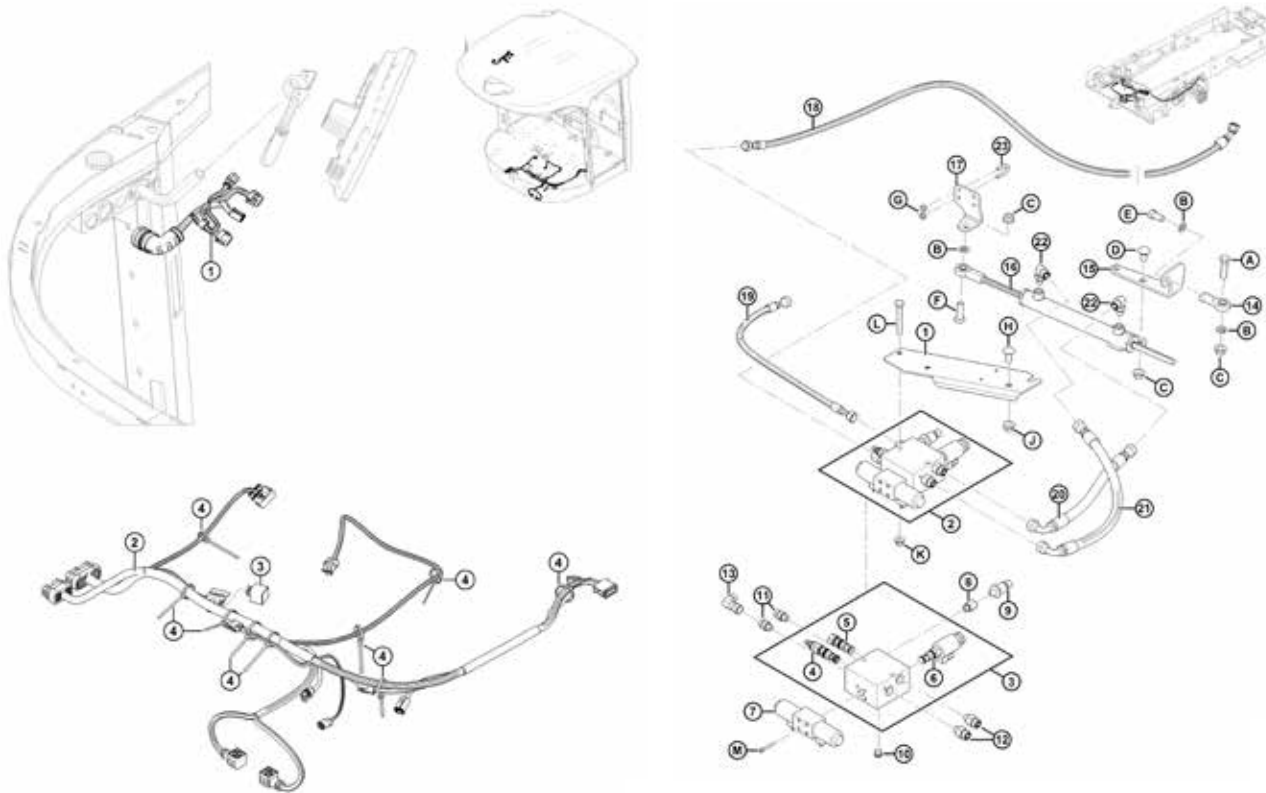
2 hours

### Instruction #:

214623

# Integrated Autopilot Ready (MY2019-2022)

**MacDon**



## WHAT IT DOES

The MacDon Trimble® Autopilot™ Ready kit is required on M1 Series Windrowers if installing the Trimble® Autopilot™ system.

## FEATURES/BENEFITS

» Allows for use of guidance assisted steering.

## IDEAL CROP CONDITIONS

Any crop condition.

## IDEAL FIELD CONDITIONS

Any field condition.

## Notes:

The EZ-Pilot Ready Kit MD# B5996 required for proper operation. The Nav II Relay kit (MD #209585) is also required if installing a Nav II controller. The relay kit is not required if installing a Nav III controller.

## SPECIFICS

### Compatible With:

M1170, M1170 NT, M1170 NT5, M1240

### Bundle #:

B6601

### Weight:

14 kg (30 lbs)

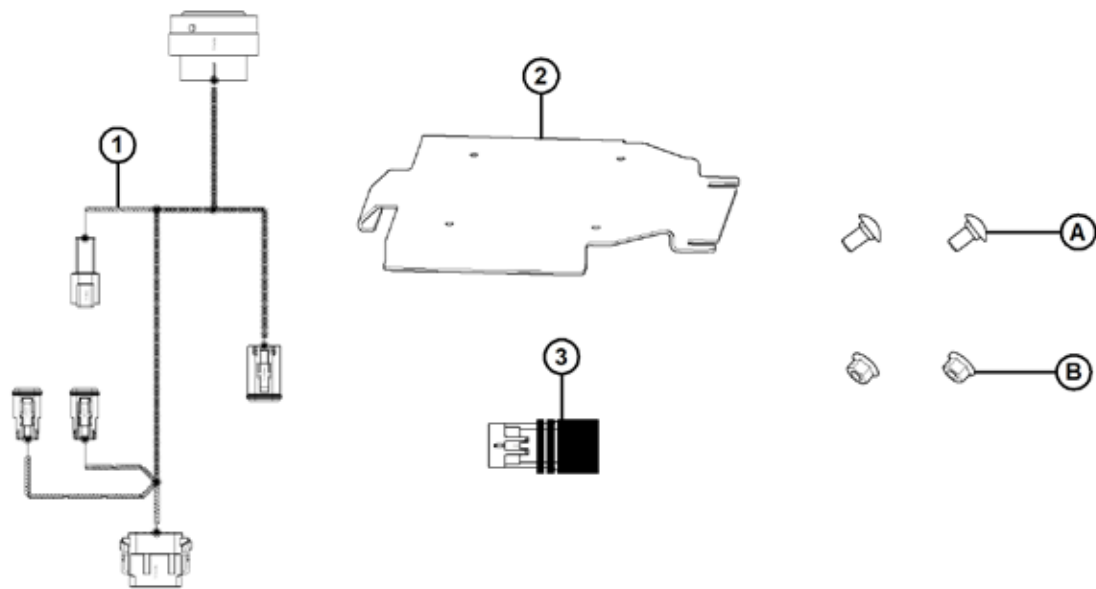
### Dealer Set-up Time:

7 hours

### Instruction #:

214624

# Trimble GFX Display (MY2019-2022)



## WHAT IT DOES

The MacDon Trimble GFX kit is designed to allow the installation and interface of the GFX (350/750) displays and NAV 500/900 antenna controllers to the existing GPS roof harness on M1 Series Windrowers for Model Years 2019 and newer.

## FEATURES/BENEFITS

- » Allows for use of guidance assisted steering.

## IDEAL CROP CONDITIONS

Any crop condition.

## IDEAL FIELD CONDITIONS

Any field condition.

## SPECIFICS

### Compatible With:

M1170, M1170 NT, M1170 NT5, M1240

### Bundle #:

B9005

### Weight:

### Dealer Set-up Time:

1 hour

### Instruction #:

215483

# On Wheel Electric Motor Drive Ready Kit (MY2023 & Newer) MacDon

## WHAT IT DOES

The MacDon On Wheel Electric Motor Drive Ready kit is used to prepare an M1 Series Windrower for use with the Trimble® EZ-Pilot®, or EZ-Pilot® Pro, and Autopilot™ Motor Drive (APMD) assisted steering systems, which are purchased along with the GFX-350™ or GFX-750™ display from a Trimble® Dealer.

## FEATURES/BENEFITS

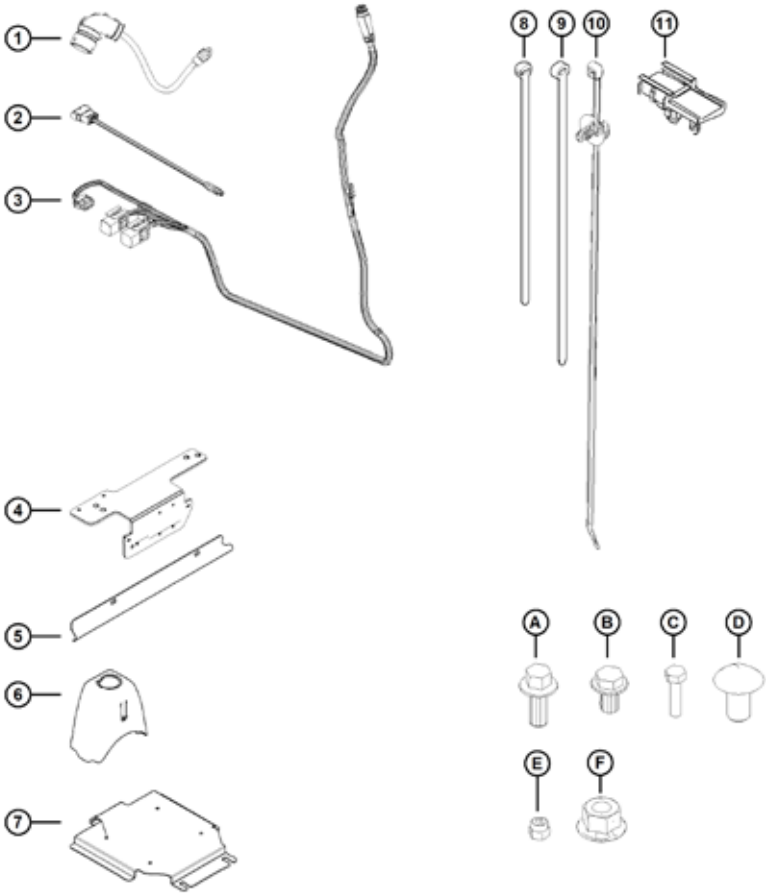
» Allows for use of guidance assisted steering.

## IDEAL CROP CONDITIONS

Any crop condition.

## IDEAL FIELD CONDITIONS

Any field condition.



## SPECIFICS

### Compatible With:

M2170, M2260, M1170, M1170 NT5, M1240

### Bundle #:

B9031 for MY 2023 M1 Series Windrowers only.  
309057 for MY2024 M2 Series Windrowers only.

### Weight:

### Dealer Set-up Time:

1 hour

### Instruction #:

215590



# Integrated Autopilot Ready (MY2023 & Newer)

**MacDon**

## WHAT IT DOES

The MacDon Trimble® Autopilot™ Ready (GFX Display) kit is required on M1 and M2 Series Windrowers (model year 2023 and later) when installing the Trimble® Autopilot™ system.

## FEATURES/BENEFITS

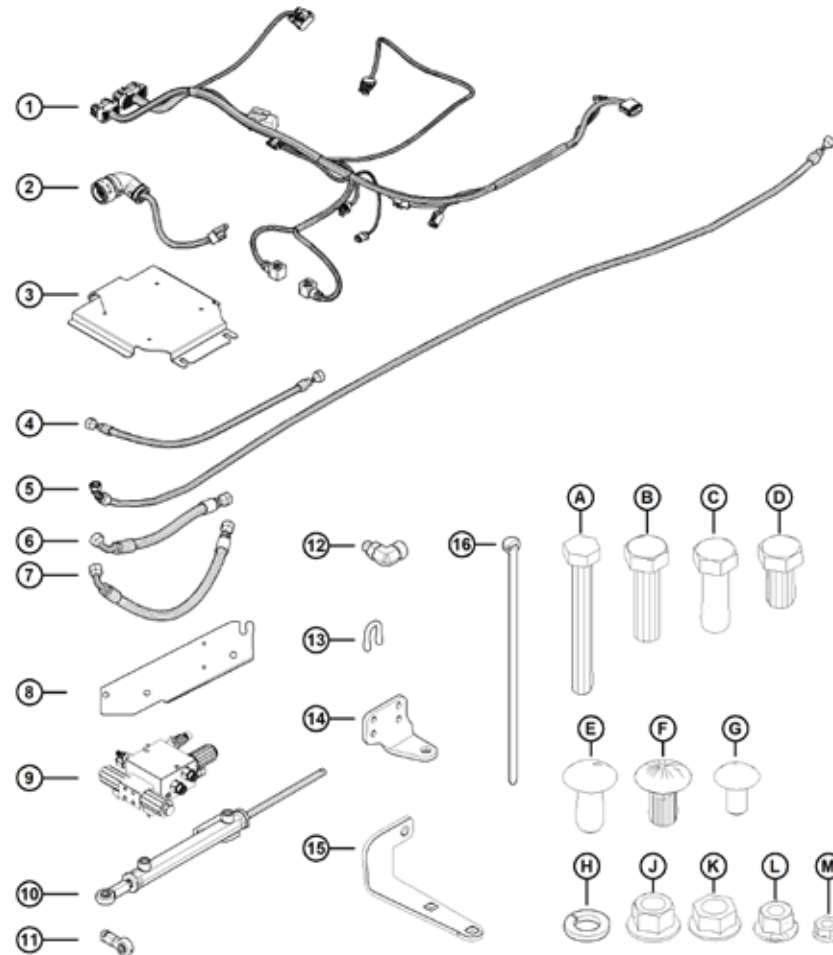
» Allows for use of guidance assisted steering.

## IDEAL CROP CONDITIONS

Any crop condition.

## IDEAL FIELD CONDITIONS

Any field condition.



## SPECIFICS

### Compatible With:

M2170, M2170 NT, M2260, M1170, M1170 NT5, M1240

### Bundle #:

B9032

### Weight:

### Dealer Set-up Time:

3 hours

### Instruction #:

215591







**MacDon**<sup>®</sup> *The Harvesting Specialists.*

***MacDon.com***