

MacDon *Performance Parts*



FD2 FlexDraper® for Combine

FD2 Introduction

Keep your FD2 at peak performance with MacDon Performance Parts!

The FD2 FlexDraper® provides you with even more harvesting performance utilizing an all-new lineup of MacDon Performance Parts. This quick reference guide provides an in-depth breakdown of the new wear parts including pictures, part numbers and more.

Now that's convenient!



Cutterbar – ClearCut™ High-Speed Cutting System

MacDon® Performance Parts



CUT CLEANER. CUT FASTER. CUT MORE.

MacDon's ClearCut™ High-Speed Cutting System delivers just that; clean cutting at up to 30% faster speeds*. Helping you get there is MacDon's improved knife drive with more power and new knife section geometry with 25% more cutting surface. A smooth close shave comes from two unique ClearCut™ Knife Guards; choose between Pointed Knife Guards or PlugFree™ Knife Guards that resist plugging even in the nastiest conditions.

1-SERIES SECTION



2-SERIES SECTION



1-SERIES GUARD



2-SERIES GUARD



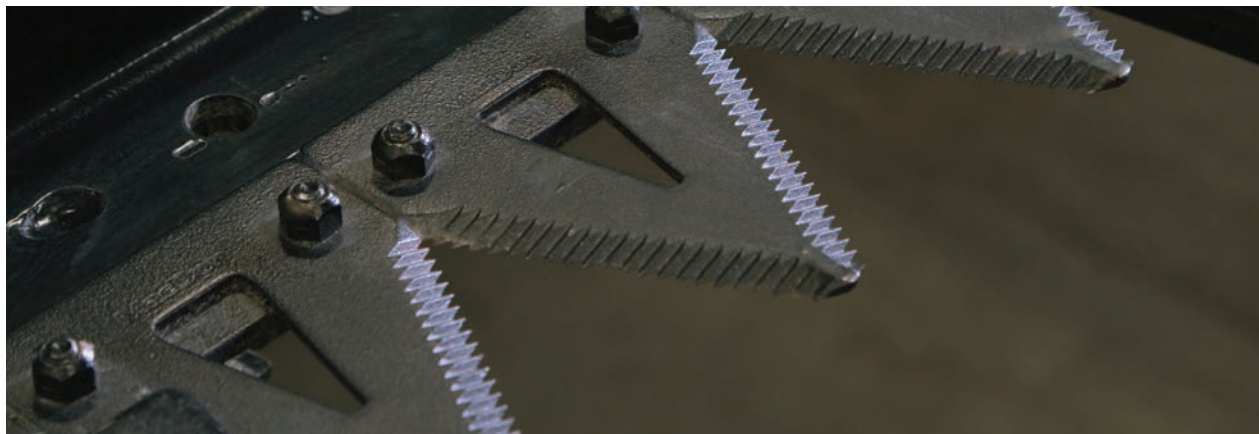
1-SERIES & 2-SERIES DIFFERENCES

FD2 Series Guards and Sections are not compatible with older generation MacDon headers.

*Compared to previous model.

Cutterbar – ClearCut™ High-Speed Cutting System

MacDon® Performance Parts



ClearCut™ Knife Sections

PART # See Table

DESCRIPTION

MacDon ClearCut™ knife sections feature over 25% more cutting surface thanks to a longer blade and improved geometry. So what does that mean for you? It means faster, cleaner cut quality at higher ground speeds.

FEATURES/BENEFITS

- » Ultra coarse, Coarse and Fine serrated options available
- » Austempered heat treatment for tougher, longer lasting sections
- » Designed to self-sharpen as they wear
- » Guaranteed hole spacing means your replacement sickle section will fit your MacDon perfectly every time

Notes:

*Not compatible with older generation MacDon headers.

PART #	DESCRIPTION
286461	SECTION - STANDARD CLEARCUT COARSE (25 PK)
286462	SECTION - STANDARD CLEARCUT FINE (25 PK)
286627	SECTION - STANDARD CLEARCUT ULTRA COARSE (25 PK)
226983	SECTION - END (SINGLE)
286463	SECTION - CLEARCUT COARSE TOP COUNTER SUNK (10 PK)
286465	SECTION - CLEARCUT FINE TOP COUNTER SUNK (10 PK)
286628	SECTION - CLEARCUT ULTRA COARSE TOP COUNTER SUNK (10 PK)
286464	SECTION - CLEARCUT COARSE BOTTOM COUNTER SUNK (10 PK)
286466	SECTION - CLEARCUT FINE BOTTOM COUNTER SUNK (10 PK)
286629	SECTION - CLEARCUT ULTRA COARSE BOTTOM COUNTER SUNK (10 PK)



ClearCut™ Knife Assembly Kits

PART # See Tables

DESCRIPTION

Provides all necessary knife segments and splice kits required to replace the complete knife on a header.

FEATURES/BENEFITS

- » Comes packaged in 1 box for ease of transportation from dealership to field

SINGLE KNIFE DRIVE

PART #	DESCRIPTION
286597	KIT - KNIFE 25FT SK COARSE
286598	KIT - KNIFE 30FT SK COARSE
286599	KIT - KNIFE 35FT SK COARSE
286600	KIT - KNIFE 40FT SK COARSE

DOUBLE KNIFE DRIVE

PART #	DESCRIPTION
286602	KIT - KNIFE 25FT DK COARSE
286603	KIT - KNIFE 30FT DK COARSE
286604	KIT - KNIFE 35FT DK COARSE
286605	KIT - KNIFE 40FT DK COARSE
286606	KIT - KNIFE 41FT DK COARSE
286607	KIT - KNIFE 45FT DK COARSE
286608	KIT - KNIFE 50FT DK COARSE

Notes:

*Knife Heads (226941 - for both RH & LH) are sold separately.

Knife Splice/Repair Kit - ClearCut™

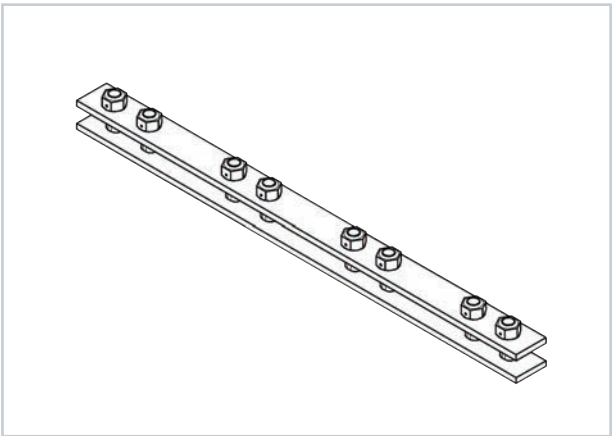
PART # 286493

DESCRIPTION

Splice kit to repair broken knife or to assemble segments.

FEATURES/BENEFITS

- » Provides a quick repair for broken sickles
- » Durable connection, the same used for splicing segmented knives together



Section Hardware - ClearCut™

PART # See Table

DESCRIPTION

Convenient Knife Section Hardware Packs.

FEATURES/BENEFITS

- » Redesigned bolts make in-field knife section replacement quick and easy

PART #	DESCRIPTION
286475	STANDARD LENGTH SECTION BOLT 50PK, 18MM C/W NUTS
286476	KNIFE HEAD SECTION BOLT - SHORT 25PK, 22MM C/W NUTS
286477	KNIFE HEAD SECTION BOLT - LONG 25PK, 29MM C/W NUTS
286478	CENTER OVERLAP SECTION BOLT 25PK, 14MM C/W NUTS
286621	KNIFE SPLICE SECTION BOLT 25 PK, 22MM C/W NUTS
286481	KNIFE REINFORCEMENT BAR (DRIVE END) 25PK

Notes:

*Knife Section not included.



Center Overlap Section Kit - ClearCut™

PART # 286473 (Coarse), 286474 (Fine), 286635 (Ultra Coarse)

DESCRIPTION

Contains all special countersunk sections and hardware for the center knife overlap on Double Knife Drive Headers.

FEATURES/BENEFITS

- » Eliminates the need of buying larger 10 packs of top and bottom countersunk sections

Notes:

*For Double Knife Drive (DK) headers only.



Pointed Knife Guards - ClearCut™

PART # See Table

DESCRIPTION

Pointed Knife Guards are multi-purpose knife guards designed to glide along the surface at high cutting speeds for a clean, even cut every time.

FEATURES/BENEFITS

- » Cutting surface is induction hardened providing targeted hardening in high contact areas, resulting in a superior cutting performance
- » Critical dimensions ensure a perfect fit on your MacDon machine every time, allowing for minimal downtime and quick replacements
- » Tapered edge design allows for sickle sections to be replaced without replacing guard

REF	PART #	DESCRIPTION
1	286315	POINTED KNIFE GUARD (STANDARD GUARD)
2	286316	POINTED END KNIFE GUARD (USED AT POSITIONS 2,3,4 FROM EACH DRIVE END)
3	286329	HOLD DOWN - POINTED GUARD
4	286317	POINTED CENTER KNIFE GUARD BOTTOM (DK DRIVE HEADER ONLY)
5	286332	POINTED CENTER KNIFE GUARD TOP (DK DRIVE HEADER ONLY)
6	286319	PLUGFREE™ END KNIFE GUARD (USED AT DRIVE END)
7	286318	PLUGFREE™ KNIFE GUARD - (USED AT RH END - SK HEADERS ONLY)
8	286331	HOLD DOWN - PLUGFREE™ END GUARD (TOP FOR 286318 & 286319)



Notes:

*Not compatible with older generation MacDon headers.

PlugFree™ Knife Guards - ClearCut™

PART # See Table

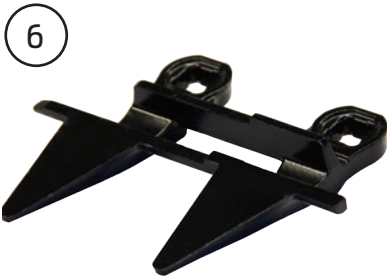
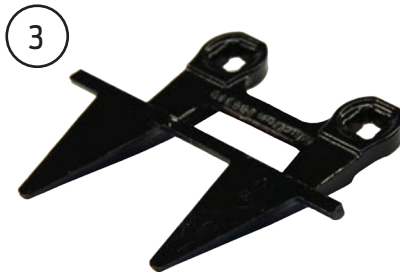
DESCRIPTION

This guard design gets the knife as close to the ground as possible while still protecting the blade from damaging debris in the field.

FEATURES/BENEFITS

» PlugFree™ Knife Guards resist plugging even in the nastiest conditions providing the closest, cleanest possible shave of the ground

REF	PART #	DESCRIPTION
1	286318	PLUGFREE™ KNIFE GUARD (STANDARD)
2	286330	HOLD DOWN - PLUGFREE™ GUARD (PAIRED WITH 286318, EXCEPT ON SK DRIVE HEADERS AT RH END)
3	286319	PLUGFREE™ KNIFE GUARD - END (USED AT POSITIONS 2,3,4 FROM EACH DRIVE END)
4	286331	HOLD DOWN - PLUGFREE™ GUARD END (PAIRED WITH 286319 AND USED AT RH END ON SK DRIVE HEADERS)
5	286333	PLUGFREE™ CENTER KNIFE GUARD - TOP (DK DRIVE HEADERS ONLY)
6	286320	PLUGFREE™ CENTER KNIFE GUARD - BOTTOM (DK DRIVE HEADERS ONLY)



Notes:

*Not compatible with older generation MacDon headers.

Cutterbar – ClearCut™ High-Speed Cutting System

MacDon Performance Parts

Pointed Knife Guard Kits - ClearCut™

PART # See Tables

DESCRIPTION

Kits include all guards required to do a complete cutterbar replacement.

FEATURES/BENEFITS

» Convenient kits, ensure customers get all guards needed for a complete replacement

SINGLE KNIFE DRIVE

PART #	DESCRIPTION
286668	KIT - POINTED GUARDS 25FT SK
286669	KIT - POINTED GUARDS 30FT SK
286670	KIT - POINTED GUARDS 35FT SK
286671	KIT - POINTED GUARDS 40FT SK

DOUBLE KNIFE DRIVE

PART #	DESCRIPTION
286661	KIT - POINTED GUARDS 25FT DK
286662	KIT - POINTED GUARDS 30FT DK
286663	KIT - POINTED GUARDS 35FT DK
286664	KIT - POINTED GUARDS 40FT DK
286665	KIT - POINTED GUARDS 41FT DK
286666	KIT - POINTED GUARDS 45FT DK
286667	KIT - POINTED GUARDS 50FT DK

Notes:

*Hardware sold separately.

PlugFree™ Knife Guard Kits - ClearCut™

PART # See Tables

DESCRIPTION

Kit includes all guards required to do a complete cutterbar replacement.

FEATURES/BENEFITS

» Convenient kits, ensure customers get all guards needed for a cutterbar rebuild

SINGLE KNIFE DRIVE

PART #	DESCRIPTION
286679	KIT - PLUGFREE™ GUARDS 25FT SK
286680	KIT - PLUGFREE™ GUARDS 30FT SK
286681	KIT - PLUGFREE™ GUARDS 35FT SK
286682	KIT - PLUGFREE™ GUARDS 40FT SK

DOUBLE KNIFE DRIVE

PART #	DESCRIPTION
286672	KIT - PLUGFREE™ GUARDS 25FT DK
286673	KIT - PLUGFREE™ GUARDS 30FT DK
286674	KIT - PLUGFREE™ GUARDS 35FT DK
286675	KIT - PLUGFREE™ GUARDS 40FT DK
286676	KIT - PLUGFREE™ GUARDS 41FT DK
286677	KIT - PLUGFREE™ GUARDS 45FT DK
286678	KIT - PLUGFREE™ GUARDS 50FT DK

Notes:

*Hardware sold separately.



Guard Hardware - ClearCut™

PART # See Table

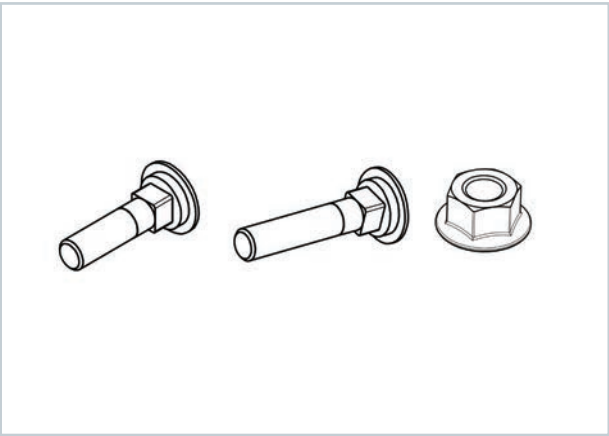
DESCRIPTION

Hardware used with both Pointed and PlugFree™ Knife Guards and hold downs.

FEATURES/BENEFITS

- » Hardware designed to meet the rigorous stresses of cutterbar demands
- » Optimizes form and fit of cutterbar poly to guard for single tool replacement

PART #	DESCRIPTION
226295	STANDARD GUARD BOLT - 47mm
226280	LONG GUARD BOLT - 60mm
136036	GUARD NUT
136005	HOLD DOWN ADJUSTER BOLT



Crop Lifters

PART # 233748 (SINGLE)

DESCRIPTION

For use with Pointed Guards, Crop Lifters are recommended for severely lodged cereal crops where operator wants maximum possible stubble height.

FEATURES/BENEFITS

- » Designed specifically by MacDon for FD2 Series Headers
- » Offers a custom header fit providing optimal functionality through all tilt angles
- » Custom fit to MacDon guards to minimize movement during cutting and prevent loss of lifters
- » Curved contact point allows lifter to glide along the ground without digging or getting knocked off

Notes:

**Sold as B7022 (10 Pack) through Whole Goods, dealer installed/aftermarket option only.*



Side Draper Belts

PART # See Table

DESCRIPTION

Side Draper Belts for FD2. Connector Hardware Kit 319095 is included.

FEATURES/BENEFITS

- » Double V-Guide allows for fully reversible drapers, extending draper life
- » Exclusive cutterbar seal prevents seed loss at leading edge of draper
- » Metal slat connectors provide increased durability and an optimal connection for longer lasting drapers
- » Better feeding with more capacity with 50" width
- » MacDon branded for authenticity

SIZE	PART #	SIZE	PART #
25 FT	319098	41 FT	319102
30 FT	319099	45 FT	319103
35 FT	319100	50 FT	319104
40 FT	319101	BULK ROLL	319540



Side Draper Connector Hardware

PART # See Table

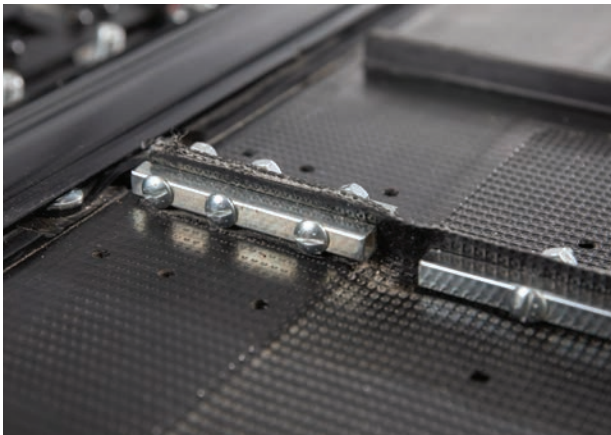
DESCRIPTION

Convenient hardware kits for draper connector slat repair.

FEATURES/BENEFITS

- » Refer to table for different repair kit options

PART #	DESCRIPTION
319345	BOLT - DRAPER SLAT CONNECTOR 30PK, 34mm C/W NUTS
319095	KIT - SIDE DRAPER CONNECTOR (CONTAINS, 319346, 319347, 275785, AND ALL HARDWARE)
319346	KIT - LONG CENTER CONNECTOR SLAT BARS (CONTAINS HARDWARE)
319347	KIT - SHORT HEM CONNECTOR SLAT BARS (CONTAINS HARDWARE)
275785	CONNECTOR BRIDGE (USED TO CONNECT DRAPER AT CUTTERBAR SEAL, 1 PER SIDE DRAPER)



Side Draper Belt Repair Kit

PART # 319105

DESCRIPTION

319105 comes with a 500mm (20") repair piece and (2) 319095 Connector Kits.

FEATURES/BENEFITS

- » Low cost alternative to replacing entire draper
- » Simply cut out damaged section and splice in repair section with the included hardware



Center Feed Draper

PART # 322555

DESCRIPTION

Center Feed Draper Belt on FM200.

FEATURES/BENEFITS

- » Two ply construction with rubber skim coating for maximum durability

Notes:

*Connector Hardware: Screws (135630 - 50 PK), Nuts (135626 - 50 PK) and Draper Connector Straps (130283) sold separately.



Feed Auger Finger Kit

PART # 337152

DESCRIPTION

Kit contains the Solid Feed Auger Finger and Guide (337143).

FEATURES/BENEFITS

- » Solid Feed Auger Fingers undergo a unique heat treatment process known as Austempering to provide a tougher, and more impact resistant structure, for maximum strength and wear characteristics
- » Improved finger guide material for better wear resistance

Notes:

*Important: Guide 337143 must be replaced alongside finger.



Split Finger Holder

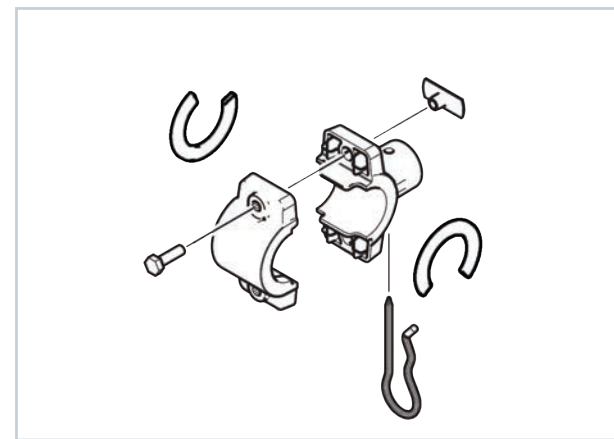
PART # 276839

DESCRIPTION

A two-piece, bolt together feed auger finger holder (pack of 5).

FEATURES/BENEFITS

- » Allows for the quick replacement of damaged feed auger finger holders
- » Doesn't require removal of all drum fingers in order to slide over new holder
- » Doesn't require disassembly of drum if spare finger holders run out





Poly Skid Shoes

PART # See Table

DESCRIPTION

Molded plastic skid shoes.

FEATURES/BENEFITS

- » Guaranteed fit to minimize replacement time
- » Allows cutting height adjustment when cutting on the ground
- » Designed to flex and shed mud in wet conditions

PART #	DESCRIPTION
276202	SKID SHOE-TRANSITION PAN (4 TOTAL PER HEADER)
289759	SKID SHOE POLY - WEARPLATE (6 TOTAL PER HEADER)
286257	CUTTERBAR SKID SHOE (2 PER FOOT OF HEADER WIDTH)



Steel Reel Finger Conversion Kits

PART # See Table

DESCRIPTION

Heavy duty Steel Finger Kits provide a longer lasting solution in rice and other abrasive crop conditions.

FEATURES/BENEFITS

- » Coil steel for flexibility and durability

PART #	DESCRIPTION
311054	STEEL REEL FINGER KIT-30FT DR 5 BAT
311055	STEEL REEL FINGER KIT-30FT DR 6 BAT
311068	STEEL REEL FINGER KIT-35FT DR 5 BAT
311069	STEEL REEL FINGER KIT-35FT DR 6 BAT

Notes:

**Steel fingers are aftermarket only - available only through MacDon Parts.*



Reel Fingers

PART # See Table

DESCRIPTION

Part of the Clean Sweep Crop Keeper System, heavy duty reel fingers come standard on every FD2 Header.

FEATURES/BENEFITS

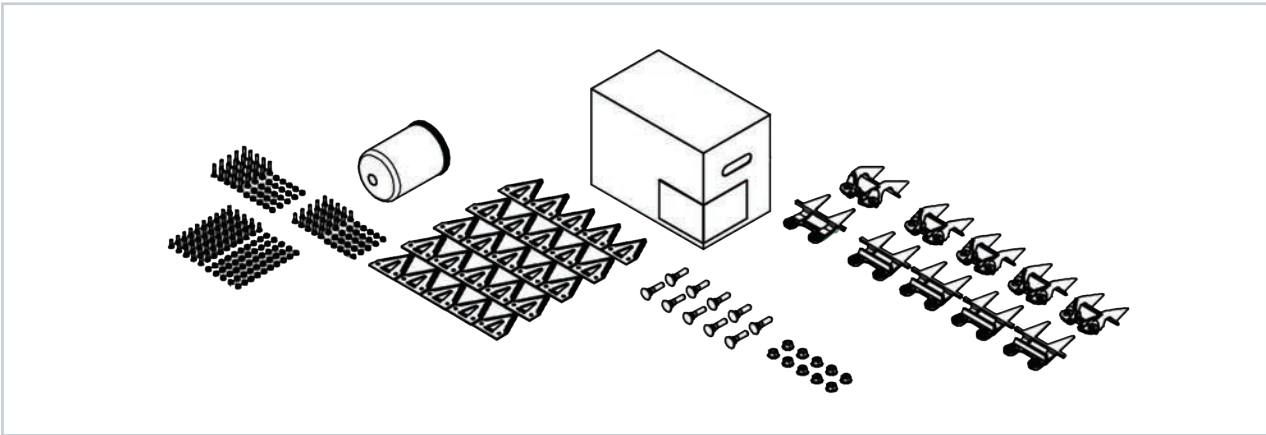
- » New Angled fingers for better corner cleaning
- » Work in conjunction with the reel end shield crop paddles and deflectors to keep your crop moving

PART #	DESCRIPTION
289742	END SHIELD DEFLECTOR FINGER*
311523	PLASTIC REEL FINGER - RH ANGLED 10PK
311524	PLASTIC REEL FINGER - LH ANGLED 10PK
174849	PLASTIC REEL FINGERS 10PK
311325	STEEL REEL FINGER - CAM END RH
311327	STEEL REEL FINGER - CAM END LH

Notes:

**289742 End Shield Deflector Finger is designed to enhance feeding at ends of header.*





Draper Header Service Kits

PART # 311789 (Pointed Guards) & 311790 (PlugFree™ Guards)
- See tables for kit contents

DESCRIPTION

Convenient wear parts kits available for both Pointed and PlugFree Guard configured headers.

FEATURES/BENEFITS

» Like a “First-Aid Kit” for your header

311789

FD2 POINTED GUARD SERVICE KIT – CONTENTS

PART #	DESCRIPTION	QTY
136036	GUARD NUT	10
320360	HYDRAULIC FILTER	1
226295	STANDARD GUARD BOLT - 47mm	10
286315	POINTED KNIFE GUARD (STANDARD GUARD)	4
286316	POINTED END KNIFE GUARD (USED AT POSITIONS 2,3,4 FROM EACH DRIVE END)	1
286461	CLEARCUT™ COARSE SECTION 25PK	1
286475	STANDARD LENGTH SECTION BOLT 50PK, 18mm C/W NUTS	1
286476	KNIFE HEAD SECTION BOLT - SHORT 25PK, 22mm C/W NUTS	1
286477	KNIFE HEAD SECTION BOLT - LONG 25PK, 29mm C/W NUTS	1

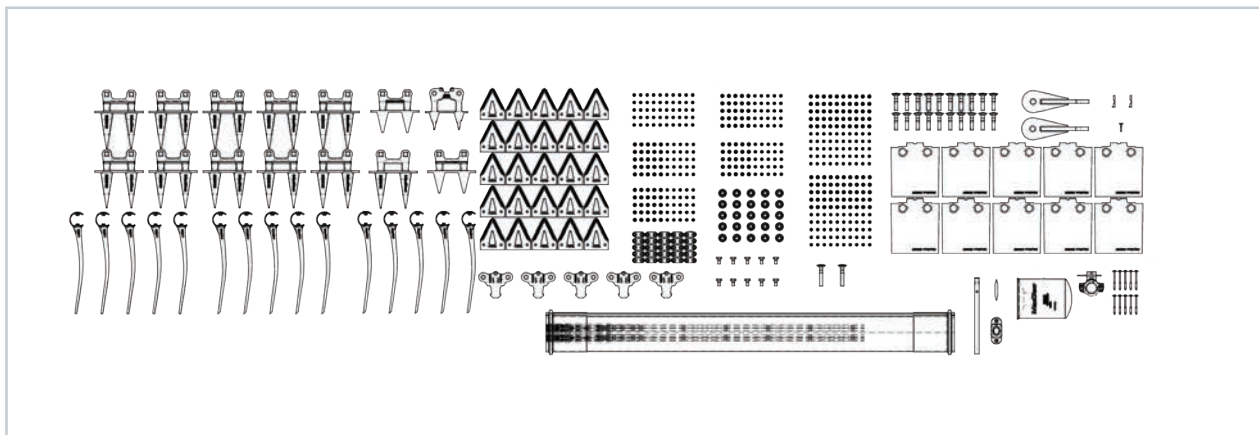
311790

FD2 PLUGFREE™ GUARD SERVICE KIT – CONTENTS

PART #	DESCRIPTION	QTY
136036	GUARD NUT	10
320360	HYDRAULIC FILTER	1
226295	STANDARD GUARD BOLT - 47mm	10
286318	PLUGFREE™ SHORT KNIFE GUARD	4
286319	PLUGFREE™ END KNIFE GUARD	1
286330	HOLD DOWN - PLUGFREE™ GUARD	4
286331	HOLD DOWN - PLUGFREE™ GUARD END (PAIRED WITH 286319 AND USED AT RH END ON SK DRIVE HEADERS)	1
286461	CLEARCUT™ COARSE SECTION 25PK	1
286475	STANDARD LENGTH SECTION BOLT 50PK, 18mm C/W NUTS	1
286476	KNIFE HEAD SECTION BOLT - SHORT 25PK, 22mm C/W NUTS	1
286477	KNIFE HEAD SECTION BOLT - LONG 25PK, 29mm C/W NUTS	1

Customer Convenience Kits

MacDon Performance Parts



Service Kit Plus - Pointed Guard, Single Knife Drive

PART # 340492 – See tables for kit contents

DESCRIPTION

A convenient kit of common wear parts and repair kits for use with single knife drive headers configured with Pointed Guards.

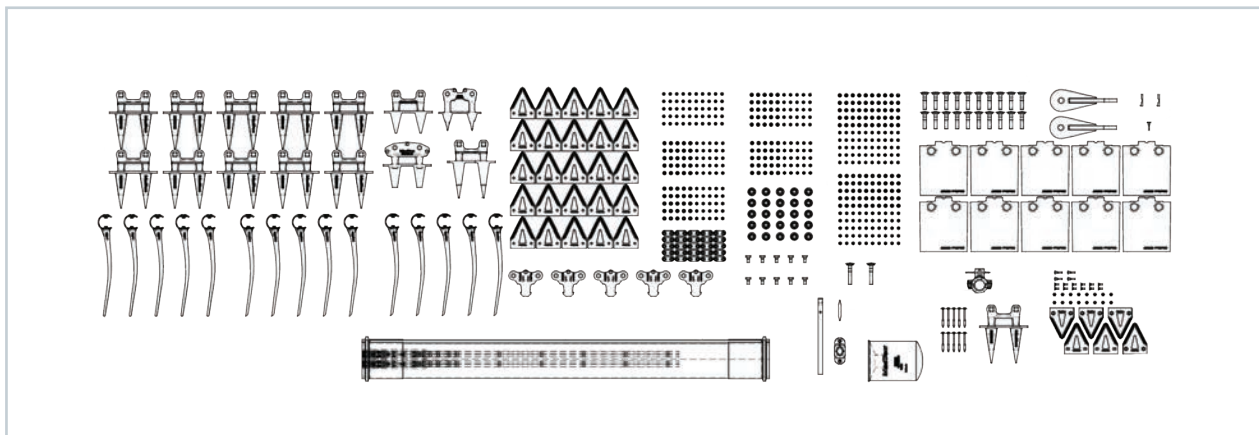
FEATURES/BENEFITS

» Ideal for customers seeking greater uptime and harvest efficiency

PART #	DESCRIPTION	QTY
135630	FEED DRAPER CONNECTOR SLAT BOLT 50PK	1
136005	HOLD DOWN ADJUSTER BOLT	10
136036	GUARD NUT	25
174849	PLASTIC REEL FINGERS 10PK	1
320360	HYDRAULIC FILTER	1
226280	LONG GUARD BOLT - 60mm	2
226295	STANDARD GUARD BOLT - 47mm	20
252687	REEL FINGER BOLT	10
258876	HEADER BREAKAWAY HOOK	2
275864	KEY - DRAPER DRIVE MOTOR	2
276839	SPLIT FINGER HOLDER - AUGER FINGER 5PK	1
286257	CUTTERBAR SKID SHOE	10
286315	POINTED KNIFE GUARD (STANDARD GUARD)	10
286316	POINTED END KNIFE GUARD (USED AT POSITIONS 2,3,4 FROM EACH DRIVE END)	1
286318	PLUGFREE™ KNIFE GUARD - (USED AT RH END – SK HEADERS ONLY)	1
286319	PLUGFREE™ END KNIFE GUARD (USED AT DRIVE END)	1
286329	HOLD DOWN - POINTED GUARD	5
286331	HOLD DOWN - PLUGFREE™ END GUARD (TOP FOR 286318 & 286319)	1
286461	CLEARCUT™ COARSE SECTION 25PK	1
286475	STANDARD LENGTH SECTION BOLT 50PK, 18mm C/W NUTS	2
286476	KNIFE HEAD SECTION BOLT - SHORT 25PK, 22mm C/W NUTS	2
286477	KNIFE HEAD SECTION BOLT - LONG 25PK, 29mm C/W NUTS	2
286479	KNIFE SECTION NUT 50PK	1
286481	KNIFE REINFORCEMENT BAR 25PK	1
311523	PLASTIC REEL FINGER - RH ANGLED 10PK	1
311524	PLASTIC REEL FINGER - LH ANGLED 10PK	1
319105	DRAPER REPAIR KIT - 500mm (20") PIECE	1
337152	FEED AUGER FINGER KIT	1

Customer Convenience Kits

MacDon Performance Parts



Service Kit Plus - Pointed Guard, Double Knife Drive

PART # 340493 – See tables for kit contents

DESCRIPTION

A convenient kit of common wear parts and repair kits for use with double knife drive headers configured with Pointed Guards.

FEATURES/BENEFITS

» Ideal for customers seeking greater uptime and harvest efficiency

PART #	DESCRIPTION	QTY
135630	FEED DRAPER CONNECTOR SLAT BOLT 50PK	1
136005	HOLD DOWN ADJUSTER BOLT	10
136036	GUARD NUT	25
174849	PLASTIC REEL FINGERS 10PK	1
320360	HYDRAULIC FILTER	1
226280	LONG GUARD BOLT - 60mm	2
226295	STANDARD GUARD BOLT - 47mm	20
252687	REEL FINGER BOLT	10
258876	HEADER BREAKAWAY HOOK	2
275864	KEY - DRAPER DRIVE MOTOR	2
276839	SPLIT FINGER HOLDER - AUGER FINGER 5PK	1
286257	CUTTERBAR SKID SHOE	10
286315	POINTED KNIFE GUARD (STANDARD GUARD)	10
286316	POINTED END KNIFE GUARD (USED AT POSITIONS 2,3,4 FROM EACH DRIVE END)	1
286317	POINTED CENTER KNIFE GUARD BOTTOM	1
286319	PLUGFREE™ END KNIFE GUARD (USED AT DRIVE ENDS)	1
286329	HOLD DOWN - POINTED GUARD	5
286331	HOLD DOWN - PLUGFREE™ END GUARD (TOP FOR 286318 & 286319)	1
286332	POINTED CENTER KNIFE GUARD TOP	1
286461	CLEARCUT™ COARSE SECTION 25PK	1
286473	CENTER KNIFE SECTION OVERLAP KIT	1
286475	STANDARD LENGTH SECTION BOLT 50PK, 18mm C/W NUTS	2
286476	KNIFE HEAD SECTION BOLT - SHORT 25PK, 22mm C/W NUTS	2
286477	KNIFE HEAD SECTION BOLT - LONG 25PK, 29mm C/W NUTS	2
286479	KNIFE SECTION NUT 50PK	1
286481	KNIFE REINFORCEMENT BAR 25PK	1
311523	PLASTIC REEL FINGER - RH ANGLED 10PK	1
311524	PLASTIC REEL FINGER - LH ANGLED 10PK	1
319105	DRAPER REPAIR KIT - 500mm (20") PIECE	1
337152	FEED AUGER FINGER KIT	1