

MacDon

Model 940 Multi-Crop Header and Hay Conditioner

PARTS CATALOG



MacDon Industries Ltd.

680 Moray Street, Winnipeg, Manitoba
Canada R3J 3S3
(204) 885-5590, Fax 832-7749
Telex 07-57849

Model 940 MULTI-CROP HEADER PARTS CATALOG

CONTENTS

HEADER	
MAIN FRAME & ATTACHMENTS	2,3
(Shields, Dividers, Shoes, Deflectors, Stand, Lights)	
PANS & STRIPPER BARS	4,5
REEL LIFT HYDRAULICS	6,7
REEL DRIVE HYDRAULICS	8,9
AUGER DRIVE HYDRAULICS	10,11
DRIVE SHAFT	12,13
SICKLE AND DRIVE	14,15
SICKLE DRIVE BOX	16,17
REEL DRIVE & SUPPORT ARMS	18,19
MOUNTING PACKAGE: PICK-UP REEL	20,21
PICK-UP REEL	22-25
AUGERS AND DRIVE	26,27
UPPER CROSS AUGER (OPTION)	28,29
DECALS AND PAINT	30,31
ADAPTER GROUP: 940 Header to 7000 Tractor	
ADAPTER	32,33
AUXILIARY FLOAT SPRING	34
DRIVELINE	35
HAY CONDITIONER	36-39
NUMERICAL LIST	40,41

ABBREVIATIONS

L/H - left hand (Determined from Operator's position, facing forward.)
R/H - right hand

I.D. - inside diameter
O.D. - outside diameter

A/R - as required (quantity varies with header size)
REF - reference, part number called up elsewhere in catalog
SUB - Substitute (Revised design may be used to repair previous design when stock is depleted.)

NC - national coarse thread
NF - national fine thread

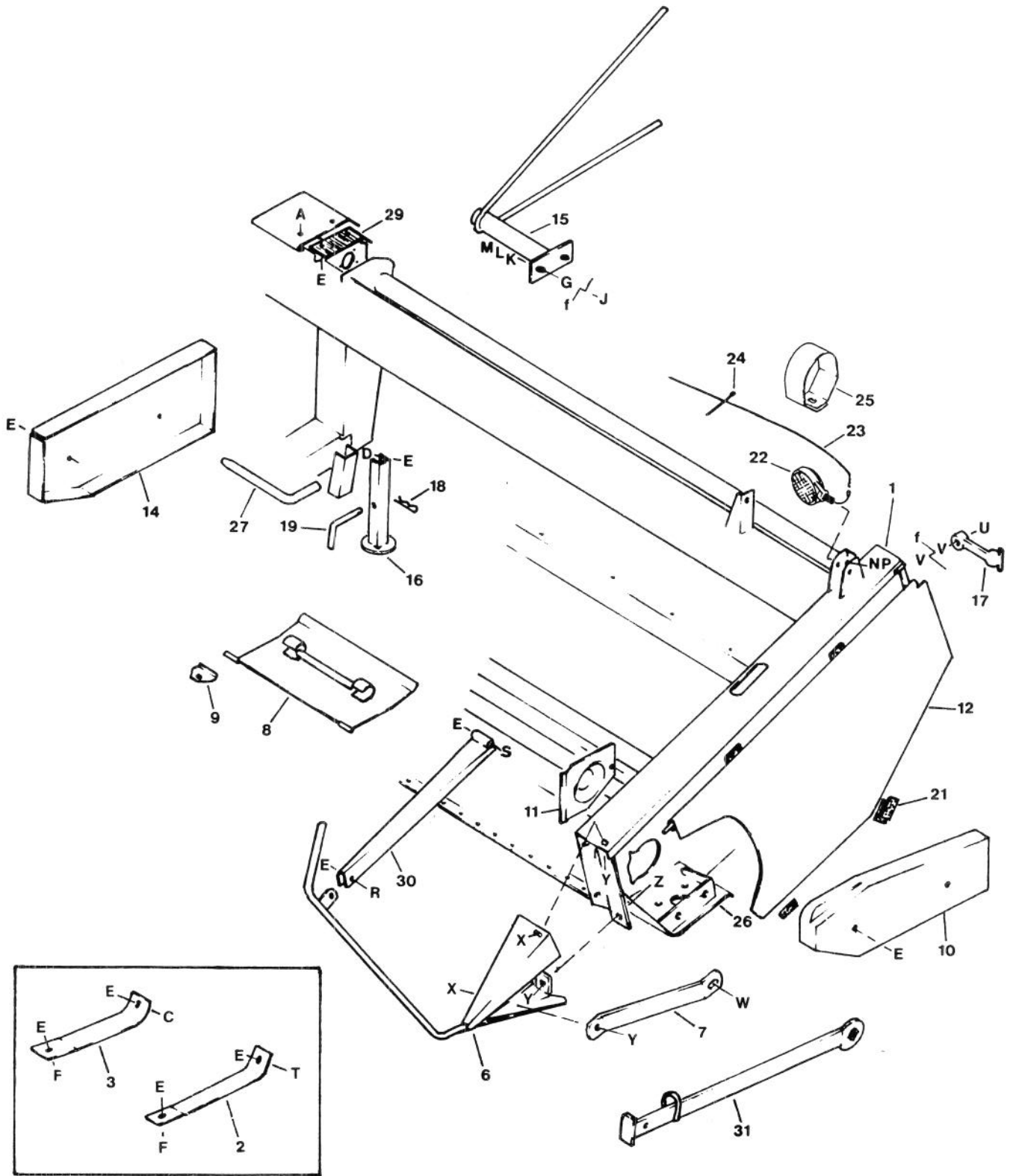
NOTE: Common hardware is not illustrated. Alphabetic references are used to designate position and description of these items.
When ordering, be sure the complete and proper serial number is given. Some parts vary with header size; be sure you are ordering the correct number for your header.

SERIAL NUMBER BREAKS

The side of the serial number on which the dash (-) appears determines whether the part is used "up to" or "after" the serial number given.

Example: -74924 Used on machines up to and including serial number 74924.
 74925- Used on machines including and after serial number 74925.

MAIN FRAME & ATTACHMENTS

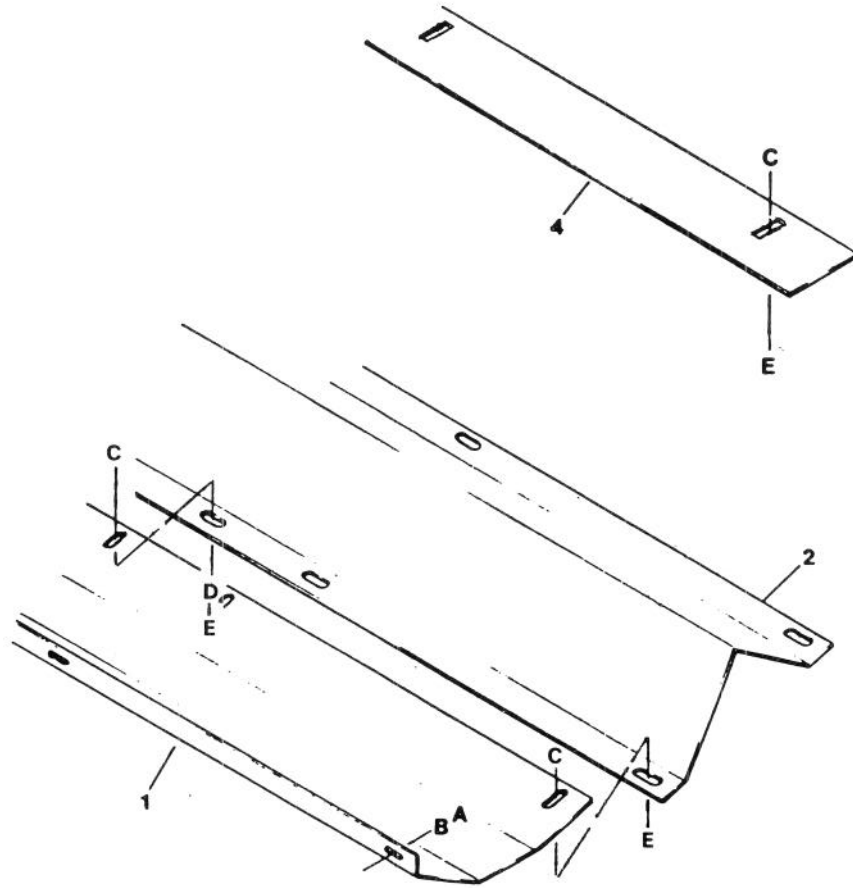


MAIN FRAME & ATTACHMENTS

REF	PART NUMBER	DESCRIPTION	QTY	SERIAL NUMBER
1	REF	FRAME - main, not serviced	1	
2	38748	SHOE - skid, left	1	-82885
	47100	SHOE - skid	1	82886-86399
3	38749	SHOE - skid, right	1	-82885
	47100	SHOE - skid	1	82886-86399
6	47162	SHOE - divider, left	1	-86399
	47550	SHOE - divider, left	1	86400-
	47163	SHOE - divider, right	1	-86399
	47551	SHOE - divider, right	1	86400-
7	47545	BRACE - left divider	1	86400-
	47546	BRACE - right divider	1	86400-
8	38500	SHOE - skid, adjustable	2	
9	38506	SUPPORT - front, skid shoe	4	
10	38517	SHIELD - left auger drive	1	
11	37367	SHIELD - wobble box	1	
12	38719	SHIELD - left side with decals	1	
14	38737	SHIELD - right auger drive	1	
15	38394	DEFLECTOR - crop, left	1	
	38395	DEFLECTOR - crop, right	1	
16	43648	SUPPORT - header	1	
17	38894	LATCH - rubber	1	
18	13125	PIN - hair	1	
19	13747	PIN - "L", header support	1	
21	25059	SEAL - sponge	5	
22	16539	LIGHT - amber	2	
23	38401	HARNESS - wiring, 12 ft. header (or SUB 47322 PLUS 47325 Harness Extension)	1	-82885
	38402	HARNESS - wiring, 15 ft. header (or SUB 47322 PLUS 47325 Harness Extension)	1	-82885
	38403	HARNESS - wiring, 18 ft. header (or SUB 47322 PLUS 47325 Harness Extension)	1	-82885
	47322	HARNESS - wiring, 12, 15, 18 ft. headers	1	82886-
	31062	CONNECTOR KIT - harness, includes male and female plugs		
24	16661	FASTENER - cable tie	7	
25	43711	GUARD - light	2	
26	38021	SUPPORT - sickle drive box (welded)	1	
27	32275	PIN - "L", lower leg	2	
29	47076	SHIELD - rubber	1	-82885
30	47159	ARM - divider brace	2	
31	34625	TOOL - wrench / guard straightener	1	
A	21863	BOLT - round hd. square neck, 3/8 NC x 3/4 inch		
C	19965	BOLT - round hd. square neck, 3/8 NC x 1 inch		
D	21567	BOLT - hex head, 3/8 NC x 3/4 inch		
E	30228	NUT - lock, flange 3/8 NC distorted thread		
F	19966	BOLT - round hd. square neck, 3/8 NC x 1 1/4 inch		
G	18602	WASHER - flat, 15/16 inch I.D.		
H	21821	BOLT - flange head, 3/8 NC x 3/4 inch		
J	18523	BOLT - round hd. square neck, 5/8 NC x 1 1/2 inch		
K	18600	WASHER - flat, 21/32 inch I.D.		
L	18639	WASHER - lock, 5/8 inch		
M	18592	NUT - hex, 5/8 inch NC		
N	18638	WASHER - lock, 1/2 inch		
P	6771	NUT - hex, 1/2 inch NF		
R	20077	BOLT - hex head, 3/8 NC x 1 inch		
S	30035	BOLT - hex head, 3/8 NC x 2 3/4 inch		
T	21975	BOLT - flange head, 3/8 NC x 1 inch		
U	30853	BOLT - round hd. square neck, 3/8 x 1 3/4 inch thread full		
V	18590	NUT - hex, 3/8 NC		
W	30368	BOLT - flange head, 1/2 NC x 1 1/4 inch		
X	21868	BOLT - round head, square neck, 1/2 NC x 1 inch		
Y	21383	NUT - serrated flange, 1/2 NC		
Z	21471	BOLT - round head, square neck, 1/2 NC x 1 1/4 inch		

f REF Indicates where hardware passes through frame member.

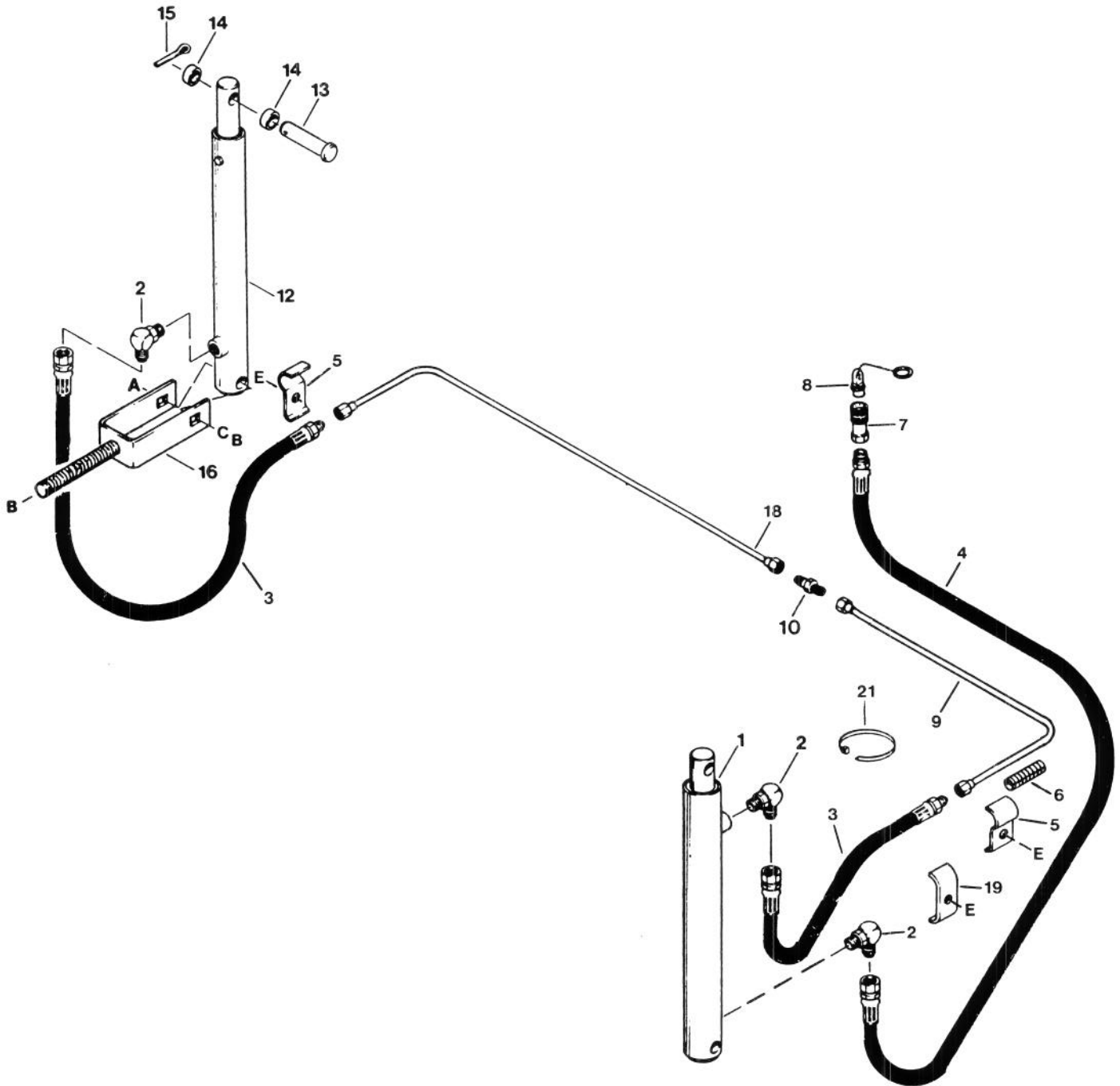
PANS & STRIPPER BARS



PANS & STRIPPER BARS

REF	PART NUMBER	DESCRIPTION	QTY	SERIAL NUMBER
1	38512	PAN - left front, 12 ft.	1	
	38513	PAN - right front, 12 ft.	1	
	38520	PAN - left front, 15 ft.	1	
	38521	PAN - right front, 15 ft.	1	
	38468	PAN - front, 18 ft.	2	
2	38477	PAN - left center, 12 ft.	1	
	38478	PAN - right center, 12 ft.	1	
	38504	PAN - left center, 15 ft.	1	
	38505	PAN - right center, 15 ft.	1	
4	38276	PAN - center, 18 ft.	2	
	38137	STRIPPER BAR - rear, 12 ft.	2	
	38138	STRIPPER BAR - rear, 15 ft.	2	
	38139	STRIPPER BAR - rear, 18 ft.	2	
A	21055	SCREW - self tap, hex washer hd. 1/4 NC x 1/2 inch		
B	18596	WASHER - flat, 9/32 inch I.D.		
C	21863	BOLT - round hd. square neck, 3/8 NC x 3/4 inch		
D	16652	WASHER - flat		
E	30228	NUT - lock, flange 3/8 NC distorted thread		

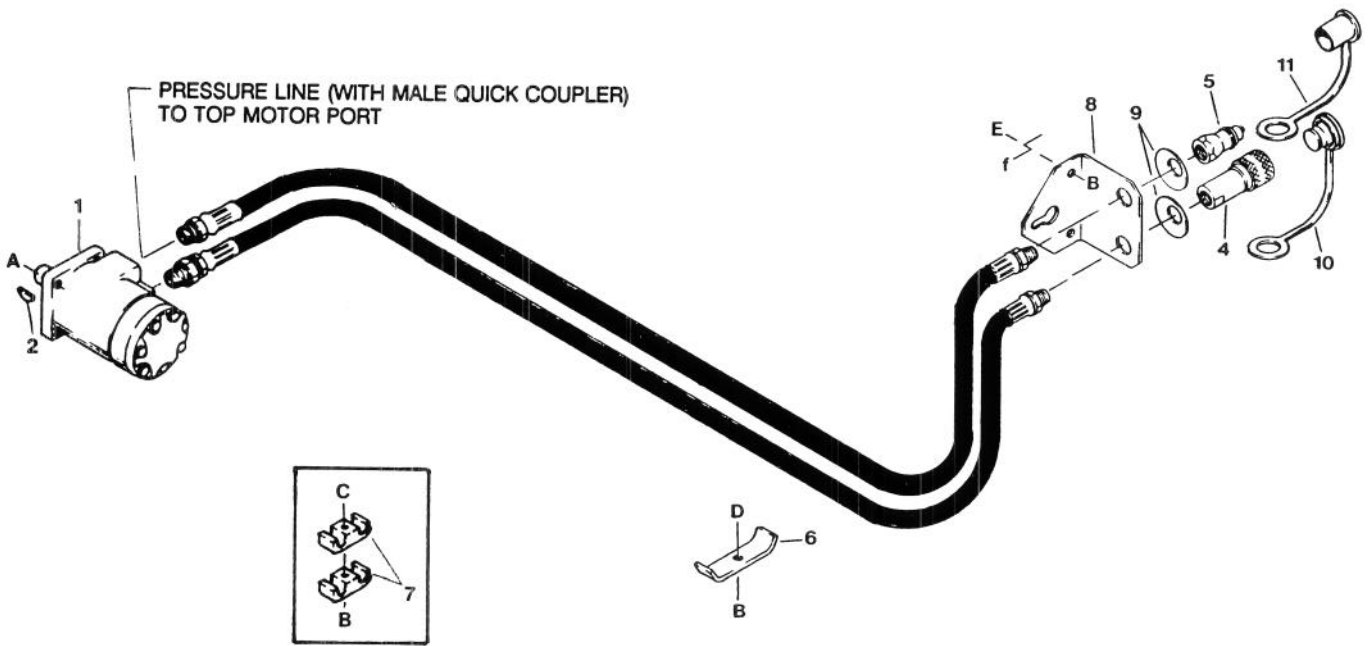
REEL LIFT HYDRAULICS



REEL LIFT HYDRAULICS

REF	PART NUMBER	DESCRIPTION	QTY	SERIAL NUMBER
1	29169	CYLINDER - reel lift, double-acting	1	
	21494	SEAL KIT - for lift cylinder 29169		
	15616	PISTON - for lift cylinder 29169		
2	30282	ELBOW - 90°, 9/16 O-Ring x 3/8 tube	3	
3	31824	HOSE - hydraulic	2	
4	47132	HOSE - hydraulic, from header leg - 12 ft.	1	-82885
	33426	HOSE - hydraulic, from header leg - 12 ft.	1	82886-
	47133	HOSE - hydraulic, from header leg - 15 ft.	1	-82885
	47132	HOSE - hydraulic, from header leg - 15 ft.	1	82886-
	47134	HOSE - hyd, from header leg - 18 ft. (or SUB 47133 PLUS 32116 Hose Extension)	1	-82885
	47133	HOSE - hydraulic, from header leg - 18 ft.	1	82886-
5	29934	HOLDER - hose	2	82886-
6	24137	PROTECTOR - hydraulic hose	1	82886-
7	30442	COUPLER - female, 1/4 NPT	1	
	50083	O-RING - for coupler 30442		
8	21876	PLUG - dust	1	
9	38371	LINE - hydraulic, left side - to right cylinder - 12 ft.	1	
	38372	LINE - hydraulic, left side - to right cylinder - 15 ft.	1	
	38373	LINE - hydraulic, left side - to right cylinder - 18 ft.	1	
10	21878	UNION - 1/4 tube	1	
12	29168	CYLINDER - reel lift, single-acting	1	
	21495	SEAL KIT - for lift cylinder 29168		
13	18738	PIN - clevis, 5/8 dia. x 2 1/2 inch	2	
14	8640	SPACER - tube	4	
15	18648	PIN - cotter, 3/16 dia. x 1 1/4 inch	2	
16	37345	CLEVIS - cylinder adjusting	2	
18	38370	LINE - hydraulic, right side - to right cylinder	1	
19	32225	HOLDER - hose	1	
21	21763	FASTENER - cable tie	4	
A	30829	BOLT - round hd. square neck, 5/8 NC x 3 1/2 inch		
B	18666	NUT - lock, 5/8 inch NC distorted thread		
C	18600	WASHER - flat, 21/32 inch ID		
E	30228	NUT - lock, flange 3/8 inch NC distorted thread		

REEL DRIVE HYDRAULICS



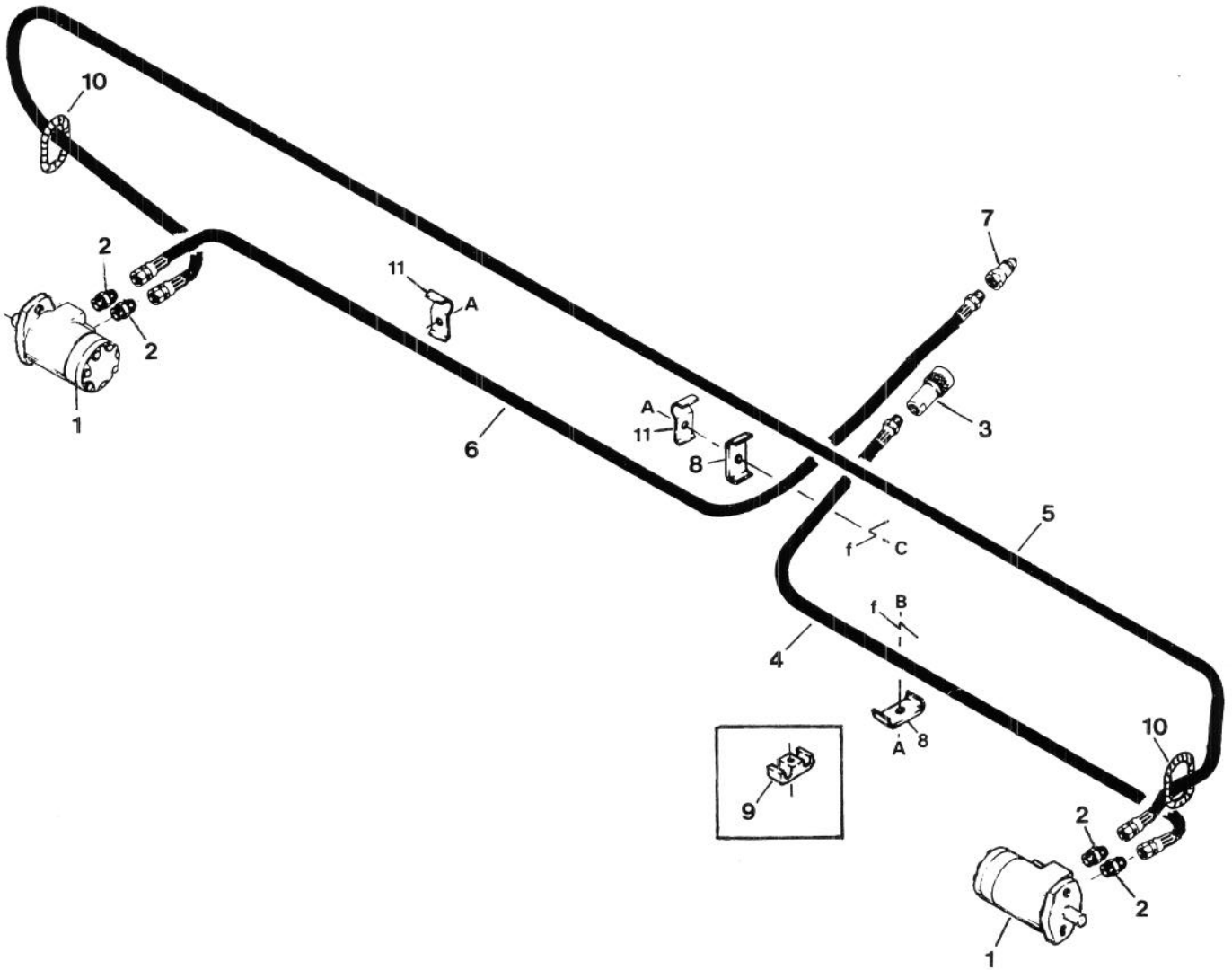
REEL DRIVE HYDRAULICS

REF	PART NUMBER	DESCRIPTION	QTY	SERIAL NUMBER
1	43011	MOTOR - hydraulic, reel drive - with key (Eaton)	1	
	43177	SEAL KIT - for motor 43011		
2	2149	KEY - woodruff, SAE #15	1	
3	38776	HOSE - hydraulic, 12 ft.	2	-82885
	43617	HOSE - hydraulic, 12 ft.	2	82886-
	38777	HOSE - hydraulic, 15 ft.	2	-82885
	43618	HOSE - hydraulic, 15 ft.	2	82886-
	38778	HOSE - hydraulic, 18 ft.	2	-82885
	47146	HOSE - hydraulic, 18 ft.	2	82886-
4	21857	COUPLER - female, 1/2 NPT	1	
	50082	O-RING - for coupler 21857		
5	21855	COUPLER - male, 1/2 NPT	1	
6	38409	HOLDER - hose	see note (1)	
7	W34897	HOLDER - hose	6	-82885
8	40336	HOLDER - hose couplers	1	82886-
9	45153	WASHER - formed	2	82886-
10	21858	PLUG - dust	1	82886-
11	21856	CAP - dust	1	82886-
A	21821	BOLT - flange head, 3/8 NC x 3/4 inch		
B	30228	NUT - lock, smooth flange 3/8 inch NC distorted thread		
C	30307	BOLT - round head square neck, 3/8 NC x 3 inch		
D	19966	BOLT - round head square neck, 3/8 NC x 1 1/4 inch		
E	21863	BOLT - round head square neck, 3/8 NC x 3/4 inch		

NOTES:

(1) - Quantities: 12'=2 / 15'=3 / 18'=3

AUGER DRIVE HYDRAULICS



AUGER DRIVE HYDRAULICS

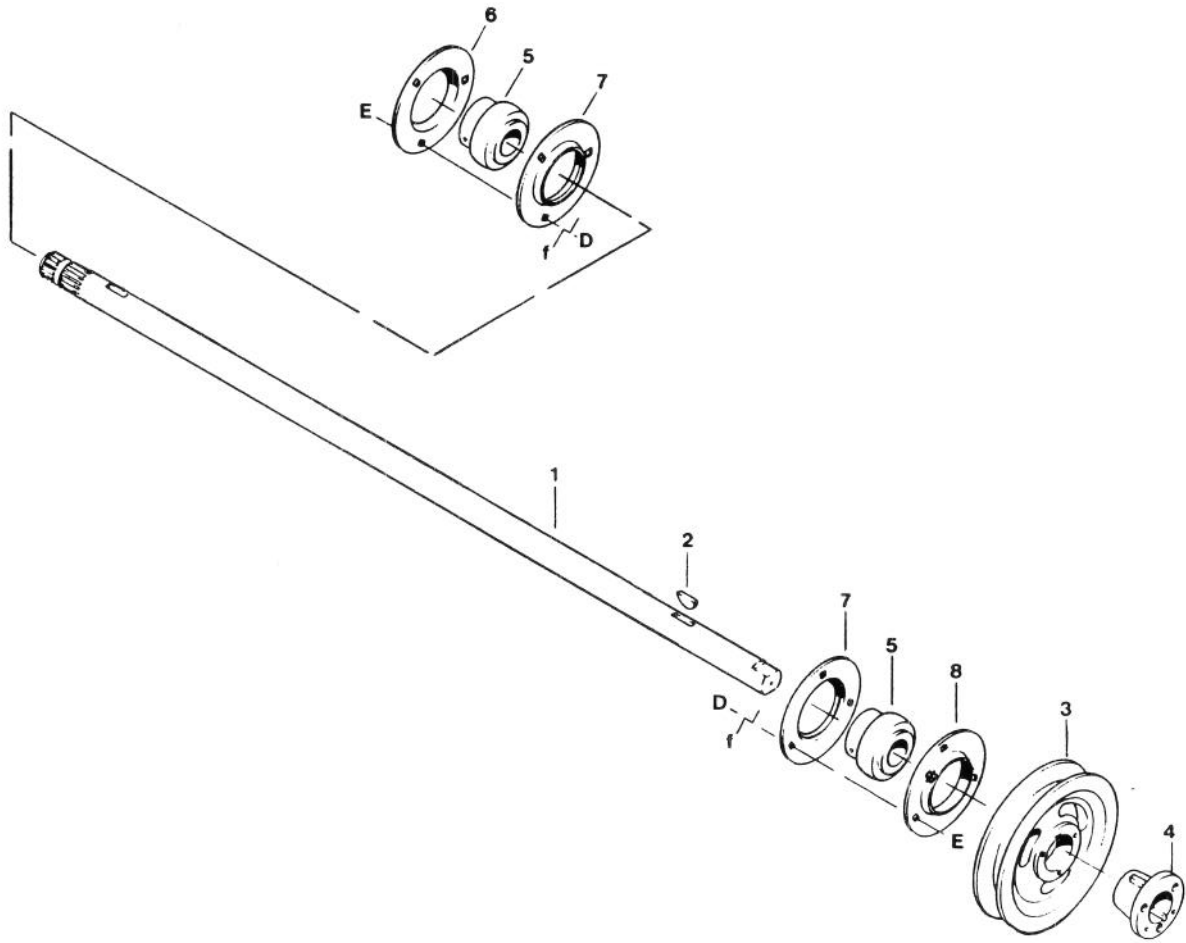
REF	PART NUMBER	DESCRIPTION	QTY	SERIAL NUMBER
1	43010	MOTOR - hydraulic, auger drive	2	
	43177	SEAL KIT - for hydraulic motor 43010		
2	21881	ADAPTER - male, 7/8 O-Ring x 1/2 tube	4	
3	21857	COUPLER - female, 1/2 NPT	1	
	50082	O-RING - for coupler 21857		
4	47138	HOSE - hyd., pressure to left motor, lower port - 12 ft. (see note 1)	1	-82885
	47147	HOSE - hyd., pressure to left motor, lower port - 12 ft.	1	82886-
	47139	HOSE - hyd., pressure to left motor, lower port - 15 ft. (see note 1)	1	-82885
	47148	HOSE - hyd., pressure to left motor, lower port - 15 ft.	1	82886-
	47140	HOSE - hyd., pressure to left motor, lower port - 18 ft. (see note 1)	1	-82885
	47149	HOSE - hyd., pressure to left motor, lower port - 18 ft.	1	82886-
5	47141	HOSE - hydraulic, from left motor upper port - 12 ft.	1	
	47142	HOSE - hydraulic, from left motor upper port - 15 ft.	1	
	47143	HOSE - hydraulic, from left motor upper port - 18 ft.	1	
6	47135	HOSE - hyd., return from right motor upper port - 12 ft.	1	
	47136	HOSE - hyd., return from right motor upper port - 15 ft.	1	
	47137	HOSE - hyd., return from right motor upper port - 18 ft.	1	
7	21855	COUPLER - male, 1/2 NPT	1	
8	32225	HOLDER - hose	see note (2)	
9	W34897	HOLDER - hose	3	-82885
10	25298	PROTECTOR - hose	2	
11	29934	HOLDER - hose	3	82886-
A	30228	NUT - lock, flange 3/8 inch NC distorted thread		
B	19966	BOLT - round head square neck, 3/8 NC x 1 1/4 inch		
C	21470	BOLT - round head square neck, 3/8 NC x 2 inch		
~f	REF	Indicates where hardware passes through frame member.		

NOTES:

(1) - When stock of 47138, 47139 or 47140 is depleted, substitute 47147 (12'), 47148 (15'), or 47149 (18'). When substituting, also order Part No. 47009 - Hose Extension, for tractor end.

(2) - Quantities: 12'=3 / 15'=4 / 18'=4

DRIVE SHAFT



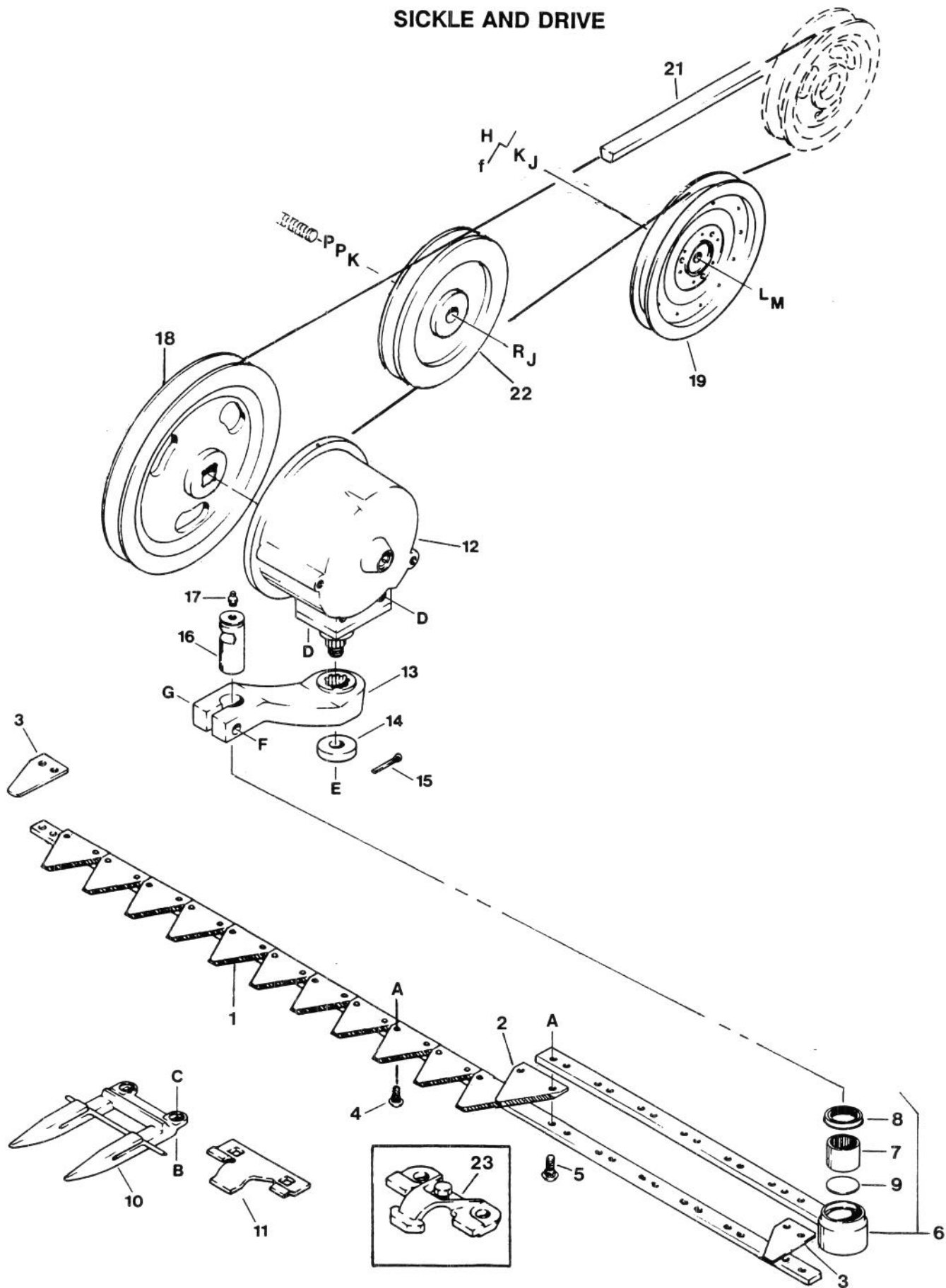
DRIVE SHAFT

REF	PART NUMBER	DESCRIPTION	QTY	SERIAL NUMBER
1	43446	SHAFT - drive, 12 ft. header	1	
	43447	SHAFT - drive, 15 ft. header	1	
	43448	SHAFT - drive, 18 ft. header	1	
2	11142	KEY - woodruff, 5/16 X 1 1/8 dia.	1	
3	34364	PULLEY - sickle drive	1	
4	21934	BUSHING - split taper	1	
5	21936	BEARING - ball, with lock collar	2	
6	21938	FLANGE - bearing, with lube fitting	1	
7	30602	FLANGE - bearing	2	
8	38568	FLANGE - bearing, with lube fitting (see NOTE 1)	1	
D	19965	BOLT - round head, square neck, 3/8 NC x 1 inch		
E	30228	NUT - lock, smooth flange, 3/8 NC distorted thread		

~f REF Indicates where hardware passes through frame member.

- NOTES: 1. If 38568 FLANGE is not in stock, make from 21938 FLANGE by replacing lube fitting with 21010 FITTING - lube, 90°.

SICKLE AND DRIVE



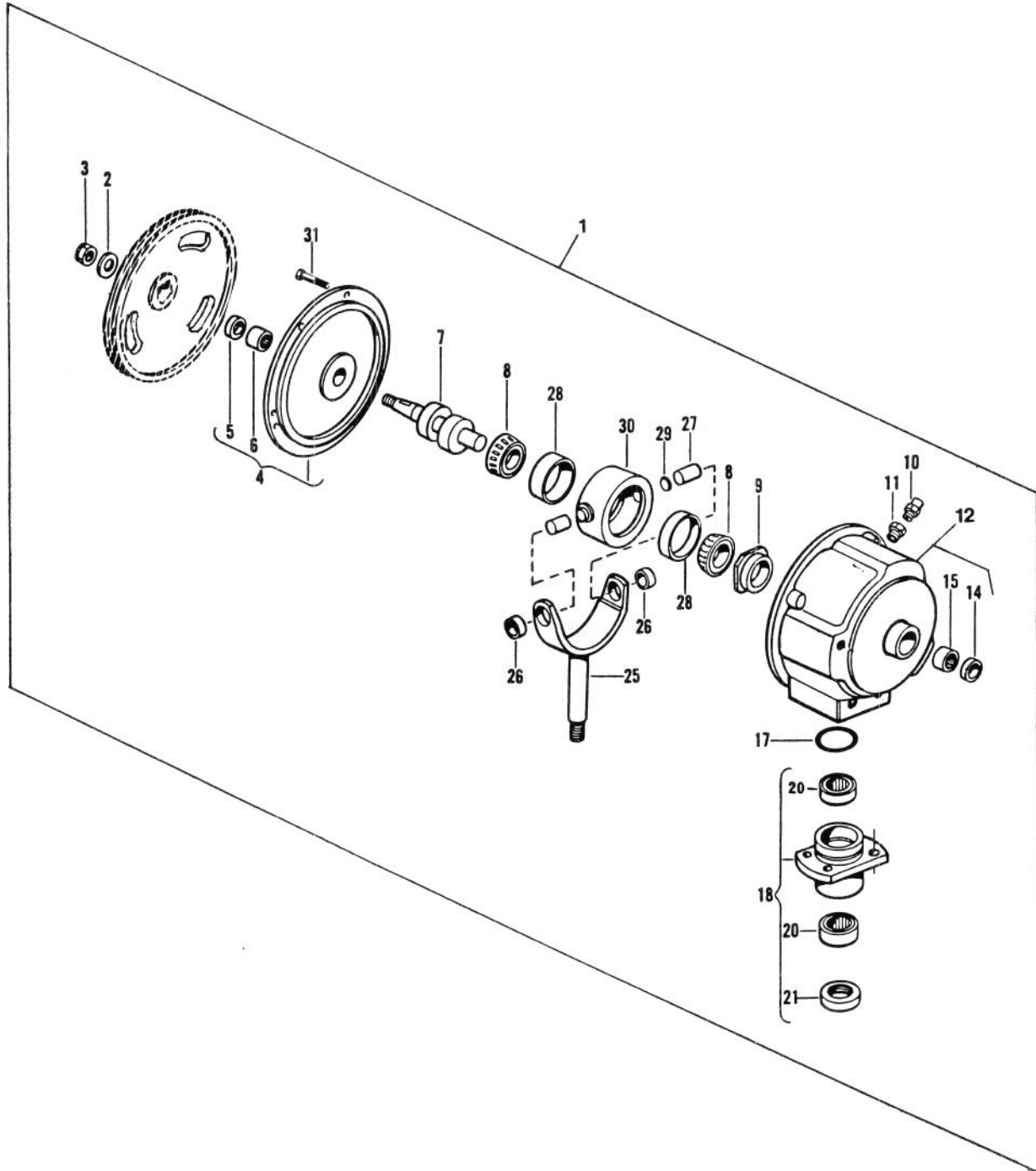
SICKLE AND DRIVE

REF	PART NUMBER	DESCRIPTION	QTY	SERIAL NUMBER
1	38632	SICKLE ASSEMBLY - 12 ft. (incl. #2-4)	1	
	38633	SICKLE ASSEMBLY - 15 ft. (incl. #2-4)	1	
	38634	SICKLE ASSEMBLY - 18 ft. (incl. #2-4)	1	
2	34390	SECTION - sickle, top-serrated	see note (1)	
3	34391	SECTION - sickle, half	2	
4	30696	SCREW - ribbed neck, #12 NC x 5/8 inch	see note (2)	
5	30668	SCREW - ribbed neck, #12 NC x 1 inch	13	
6	34388	HEAD ASSEMBLY - sickle (incl. #7, 8 and 9)	1	
7	30607	BEARING - needle	1	
8	30608	SEAL - sickle head	1	
9	34389	PLUG - sickle head	1	
10	28014	SICKLE GUARD - first 2 at left end only	2	
	28013	SICKLE GUARD - except first 2 @ left end	see note (3)	
11	28815	GUIDE - sickle, hold-down	see note (4)	
12	REF	DRIVE - sickle, see page 17	1	
13	21865	ARM - drive	1	
14	21717	WASHER - flat	1	
15	18648	PIN - cotter, 3/16 x 1 1/4 inch	1	
16	26321	PIN - sickle head	1	
17	21887	FITTING - lubrication	1	
18	21418	PULLEY - driven	1	
19	21862	PULLEY - idler, back-side	1	
21	47041	BELT - sickle drive	1	
22	21054	PULLEY - "V" idler	1	
23	47130	GUIDE - adjustable sickle hold-down, with bolt (Optional)	A/R	
	50119	BOLT - hex head, 3/8 NC x 3/4 inch, stainless steel		
A	30669	NUT - lock, #12 NC distorted thread		
B	8219	BOLT - round hd. square neck, 7/16 NC x 1 1/4 inch - THRU GUARD ONLY		
	8218	BOLT - round hd. sq. neck, 7/16 NC x 1 1/2 inch - THRU GUARD & GUIDE		
	21468	BOLT - rnd.hd.sq.nk. 7/16 x 1 3/4 in. - THRU GUARD, GUIDE & SHOE (12' only)		
C	18654	NUT - hex, 7/16 inch NC		
D	30861	BOLT - hex head, 5/8 NF x 2 inch Gr.8		
E	5440	NUT - slotted hex, 3/4 inch NC		
F	30922	BOLT - hex head, 5/8 NC x 2 3/4 inch		
G	18666	NUT - lock, 5/8 in. NC distorted thread		
H	21489	BOLT - round hd. square neck, 1/2 x 2 1/2 inch		
J	18592	NUT - hex, 5/8 inch NC		
K	18600	WASHER - flat, 21/32 ID		
L	18638	WASHER - lock, 1/2 inch		
M	18591	NUT - hex, 1/2 inch NC		
P	18593	NUT - hex, 3/4 inch NC		
R	18639	WASHER - lock, 5/8 inch		

NOTES:

- (1) - Quantities: 12' = 47 / 15' = 59 / 18' = 71
(2) - Quantities: 12' = 85 / 15' = 109 / 18' = 133
(3) - Quantities: 12' = 22 / 15' = 28 / 18' = 34
(4) - Quantities: 12' = 10 / 15' = 14 / 18' = 17

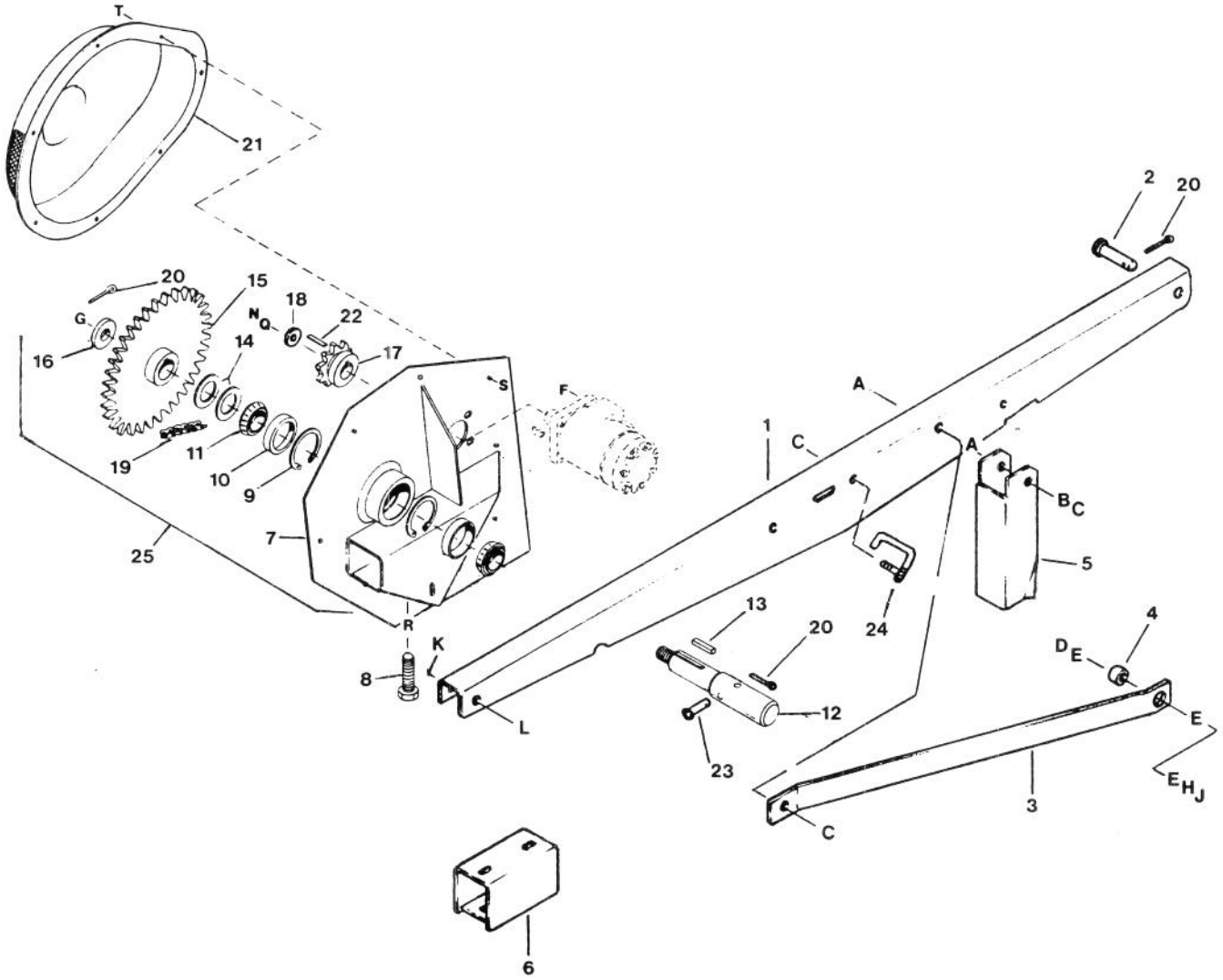
SICKLE DRIVE BOX



SICKLE DRIVE BOX

REF	PART NUMBER	DESCRIPTION	QTY	SERIAL NUMBER
1	26320	DRIVE - sickle, complete (with mounting bolts)	1	
2	21417	WASHER - flat, .78 I.D. x 1 5/8 O.D. X 1/8 inch thk.	1	
3	18689	NUT - lock, 3/4 inch NC distorted thread	1	
4	21421	COVER ASSEMBLY - includes items 5 & 6	1	
5	30814	SEAL - oil	1	
6	21420	BEARING - needle	1	
7	21712	SHAFT - drive	1	
8	21512	BEARING - cone	2	
9	21424	NUT - stake, 1 15/16 - 20 hex spiral	1	
10	21425	VALVE - relief	1	
11	21024	ADAPTER - 3/8 x 1/8 pipe thread	1	
12	26319	HOUSING ASSEMBLY - incl. #14, 15 and mounting bolts	1	
14	30815	SEAL - oil	1	
15	21513	BEARING - needle	1	
17	21514	O-RING - 2 5/8 x 2 7/8 x 1/8 inch	1	
18	26318	CAP ASSEMBLY - includes items 20 & 21	1	
20	21516	BEARING - needle	2	
21	21517	SEAL - oil	1	
25	21429	YOKE - output, with bushings	1	
26	21715	BUSHING - bronze	2	
27	21713	SPINDLE	2	
28	21519	BEARING - cup	2	
29	21716	PLUG - nylon, 7/8 dia. x 1/64 inch thk.	2	
30	21714	HOUSING - bearing	1	
31	21520	BOLT - hex head, 5/16 NC x 1 inch, Gr.8	6	

REEL DRIVE & SUPPORT ARMS



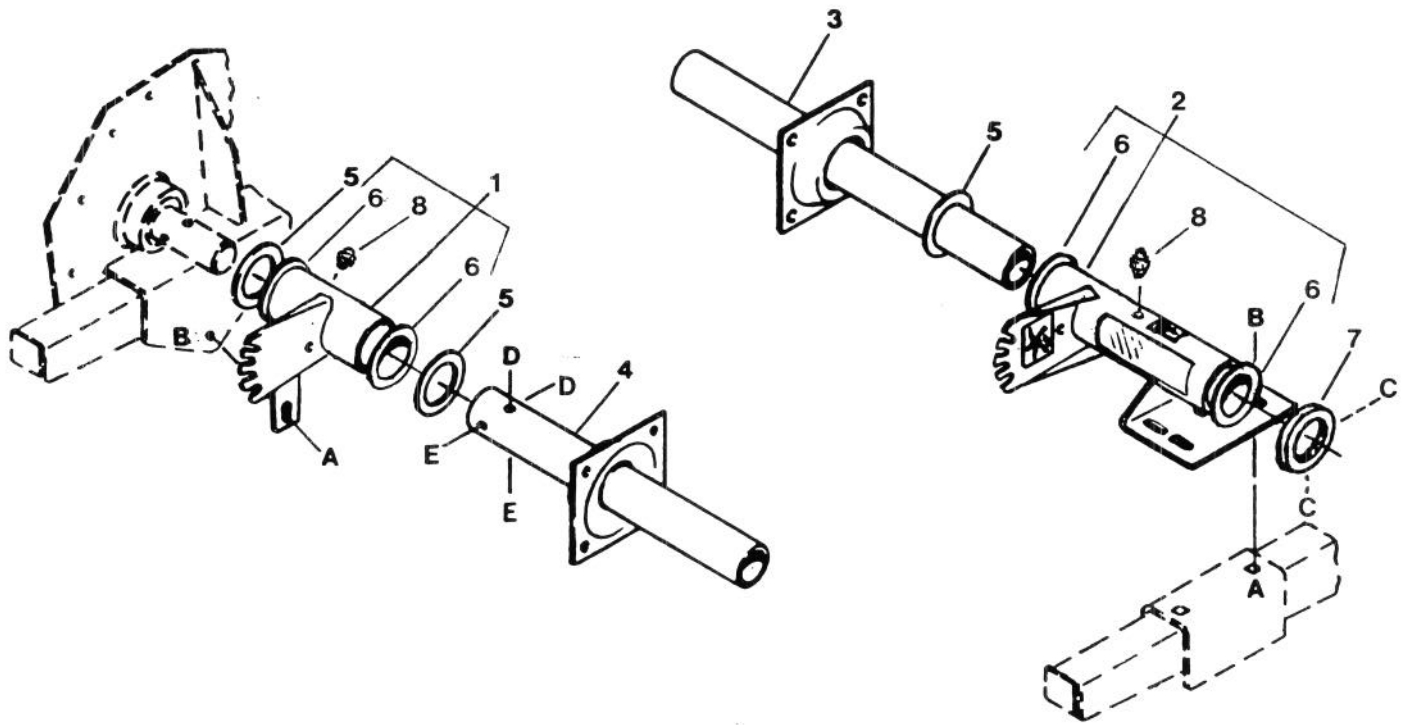
REEL DRIVE & SUPPORT ARMS

REF	PART NUMBER	DESCRIPTION	QTY	SERIAL NUMBER
1	37948	ARM - reel support	2	
2	19958	PIN - clevis, 5/8 dia. x 3 1/4 inch	2	
3	26446	BRACE - diagonal	2	
4	8640	SPACER - tube	2	
5	37336	SUPPORT - reel prop	2	
6	37919	SUPPORT - reel mount, left hand	1	
7	37869	SUPPORT - reel drive, with bearing cups & snap rings	1	
8	37866	SCREW - positioning, reel fore-aft	2	
9	21545	RING - retaining, internal	2	
10	7900	BEARING - cup	2	
11	7910	BEARING - cone	2	
12	33532	SHAFT - reel drive	1	
13	26846	KEY - reel drive shaft	1	
14	19681	WASHER - flat	2	
15	26848	SPROCKET - driven	1	
16	16235	WASHER - flat	1	
17	26847	SPROCKET - drive, hydraulic motor	1	
18	43219	WASHER - flat	1	
19	20117	CHAIN - roller, #60 x 40 links	1	
20	18648	PIN - cotter, 3/16 x 1 1/4 inch	5	
21	47167	SHIELD - reel drive, with reflector	1	
22	43464	SHIM - reel drive sprocket	see note (1)	
23	19809	PIN - clevis, 1/2 dia. x 2 inch	2	
24	43597	GUIDE - hose	1	
25	43689	REEL DRIVE ASSEMBLY - includes hydraulic motor	1	
A	21581	BOLT - hex head, 1/2 NC x 3 1/2 inch		
B	18638	WASHER - lock, 1/2 inch		
C	18697	NUT - lock, 1/2 inch NC distorted thread		
D	21582	BOLT - hex head, 5/8 NC x 1 3/4 inch		
E	18600	WASHER - flat, 21/32 inch I.D.		
F	21821	BOLT - flange head, 3/8 NC x 3/4 inch		
G	5512	NUT - slotted, 3/4 inch NF		
H	18639	WASHER - lock, 5/8 inch		
J	18592	NUT - hex, 5/8 inch NC		
K	30035	BOLT - hex head, 3/8 NC x 2 3/4 inch		
L	30228	NUT - lock, smooth flange, 3/8 inch NC distorted thread		
N	21566	BOLT - hex head, 1/4 NC x 3/4 inch		
Q	18635	WASHER - lock, 1/4 inch		
R	21345	NUT - hex jam, 5/8 inch NC		
S	21476	BOLT - round head square neck, 1/4 NC x 3/4 inch		
T	21455	NUT - flange lock, 1/4 inch NC		

NOTES:

(1) - Nominal quantity is 4. Use as required.

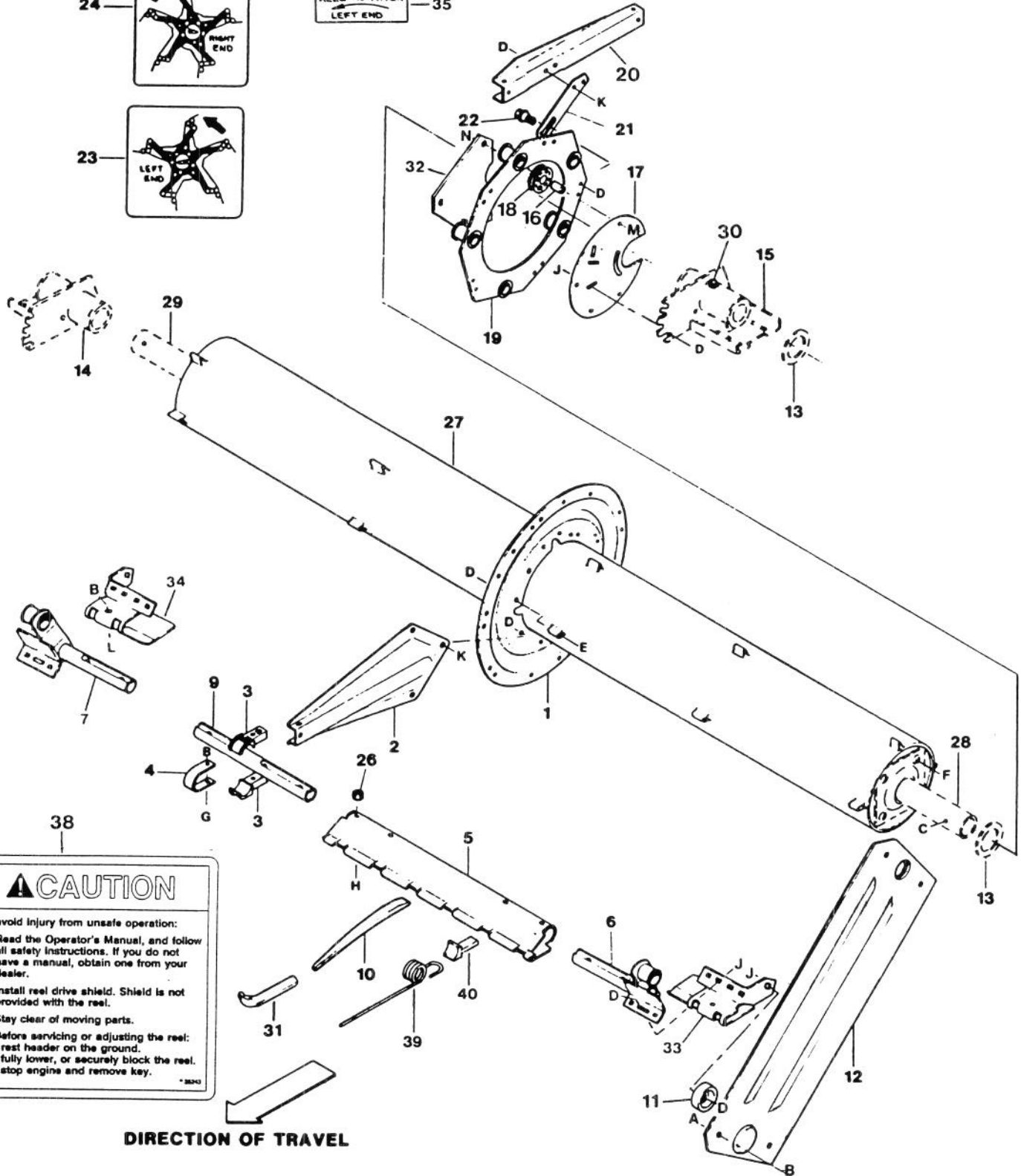
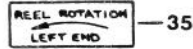
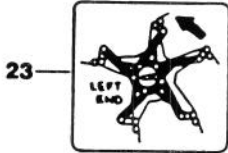
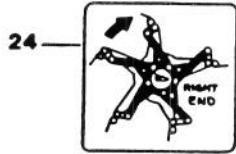
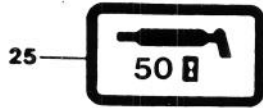
MOUNTING PACKAGE: PICK-UP REEL



MOUNTING PACKAGE: PICK-UP REEL

REF	PART NUMBER	DESCRIPTION	QTY	SERIAL NUMBER
1	35791	SUPPORT - reel, right (includes item 6, qty. 2 and item 8)	1	
2	35787	SUPPORT - reel, left (includes item 6, qty. 2 and item 8)	1	
3	35558	TUBE - end, left	1	
4	35171	TUBE - drive	1	
5	27160	WASHER - flat, 3 inch O.D.	3	
6	35694	BUSHING - plastic	4	
7	35564	COLLAR - shaft	1	
8	18671	FITTING - lube	2	
A	19965	BOLT - round hd. square neck 3/8 NC x 1 inch		
B	30228	NUT - lock, flange 3/8 inch NC distorted thread		
C	30872	SETSCREW - socket, 5/16 NC x 1/4 inch		
D	19809	PIN - clevis, 1/2 dia. x 2 inch		
E	18648	PIN - cotter, 3/16 dia. x 1 1/4 inch		

PICK-UP REEL



CAUTION

To avoid injury from unsafe operation:

1. Read the Operator's Manual, and follow all safety instructions. If you do not have a manual, obtain one from your dealer.
2. Install reel drive shield. Shield is not provided with the reel.
3. Stay clear of moving parts.
4. Before servicing or adjusting the reel:
 - rest header on the ground.
 - fully lower, or securely block the reel.
 - stop engine and remove key.

- 38243

DIRECTION OF TRAVEL

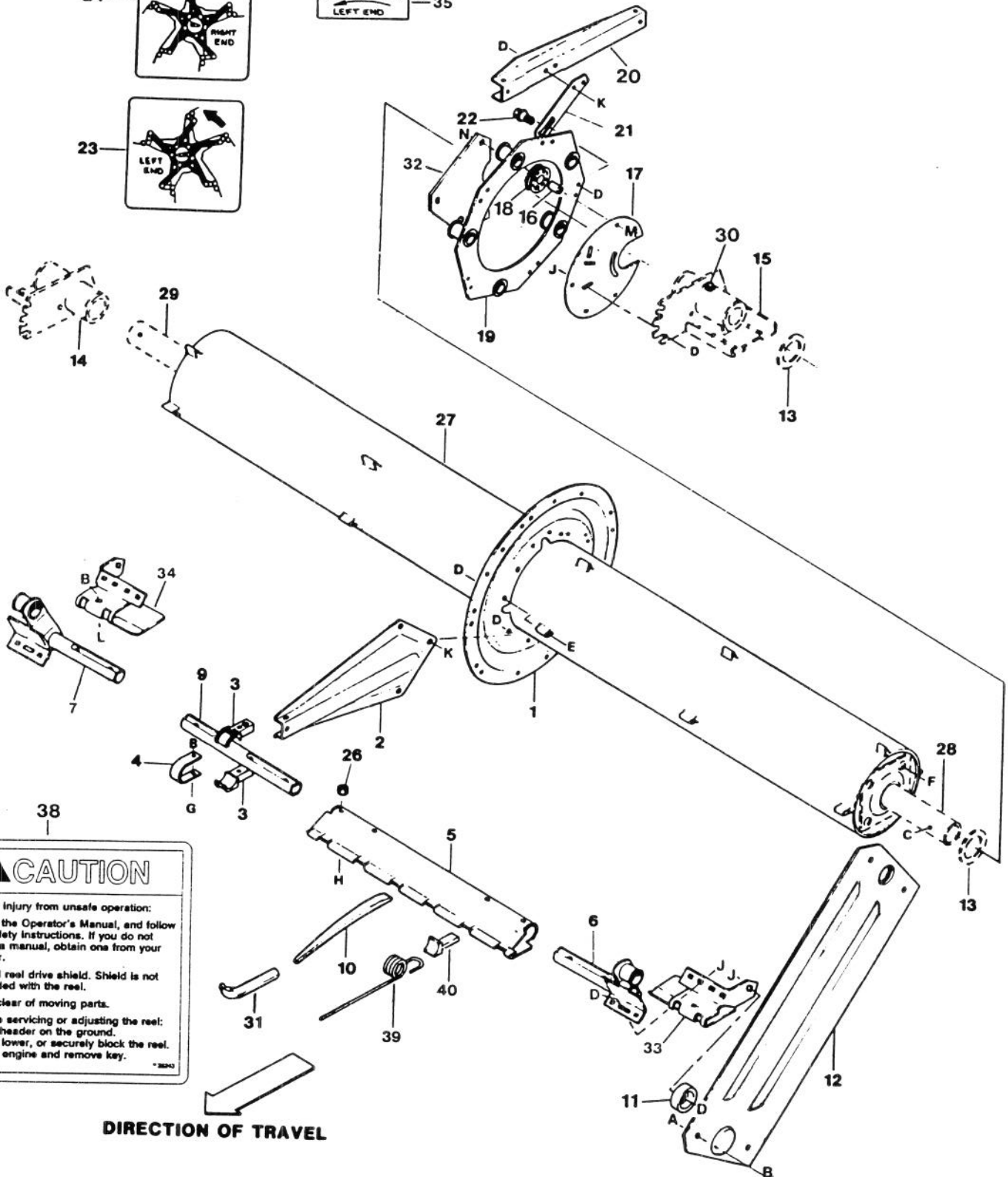
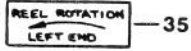
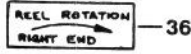
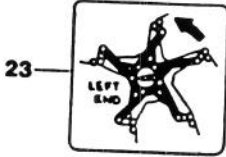
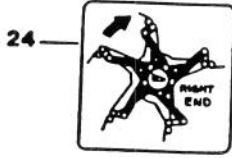
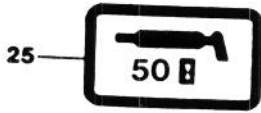
PICK-UP REEL

REF	PART NUMBER	DESCRIPTION	QTY	SERIAL NUMBER
1	27171	DISC - arm		see note (1)
2	35017	ARM - reel		see note (2)
3	27172	BEARING HALF - bat		see note (3)
4	27166	STRAP - bearing		see note (4)
5	48008	BAT - reel, 54" (1380 mm) - 15 ft. header	15	
	48009	BAT - reel, 60" (1535 mm) - 12 ft. header	5	
	48010	BAT - reel, 66" (1690 mm) - 12 ft. header	5	
	48010	BAT - reel, 66" (1690 mm) - 18 ft. header	15	
6	35680	CRANK - L/H, reel	5	
7	35681	CRANK - R/H, reel	5	
9	27984	TUBE - bat connector		see note (5)
10	27985	FINGER - pick-up, plastic		see note (6)
11	35660	BEARING - end shield	10	
12	48023	SHIELD - end	10	
13	REF	WASHER - flat, see Mounting Package	3	
14	REF	SUPPORT R/H - see Mounting Package	1	
15	REF	SUPPORT L/H - see Mounting Package	1	
16	4150	SPACER - cam roller	8	
17	35659	PLATE - control	2	
18	35688	ROLLER - cam	8	
19	35655	RING - cam	2	
20	35679	ARM - bat control	10	
21	35012	LINK - cam control	10	
22	27647	BOLT - shoulder, special	10	
23	27167	DECAL - L/H bearing	1	
24	27168	DECAL - R/H bearing	1	
25	23165	DECAL - 50 hour grease	2	
26	35689	NUT - special, 5/16 inch NC		see note (7)
27	35058	TUBE - main, 12 ft.	1	
	35064	TUBE - main, 15 ft.	1	
	35070	TUBE - main, 18 ft.	1	
28	REF	TUBE - end, L/H, see Mounting Package	1	
29	REF	TUBE - end, R/H, see Mounting Package	1	
30	18671	FITTING - lube, 1/4 inch NF	2	
31	35661	TOOL - finger/adjuster	1	
32	48020	PLATE - support	2	
33	35767	BAT - end, L/H	5	
34	35768	BAT - end, R/H	5	
35	35396	DECAL - reel rotation, left	3	
36	35397	DECAL - reel rotation, right	3	
38	35243	DECAL - CAUTION, general safety	2	
39	35282	FINGER - Pick-Up, steel		see note (6)
40	35281	CLIP - steel finger		see note (6)

NOTES:

- (1) - Quantities: 12' = 3 / 15' = 4 / 18' = 4
(2) - Quantities: 12' = 15 / 15' = 20 / 18' = 20
(3) - Quantities: 12' = 70 / 15' = 80 / 18' = 80
(4) - Quantities: 12' = 35 / 15' = 40 / 18' = 40
(5) - Quantities: 12' = 5 / 15' = 10 / 18' = 10
(6) - Quantities: 12' = 165 / 15' = 205 / 18' = 250
(7) - Quantities: 12' = 40 / 15' = 60 / 18' = 60

PICK-UP REEL



CAUTION

To avoid injury from unsafe operation:

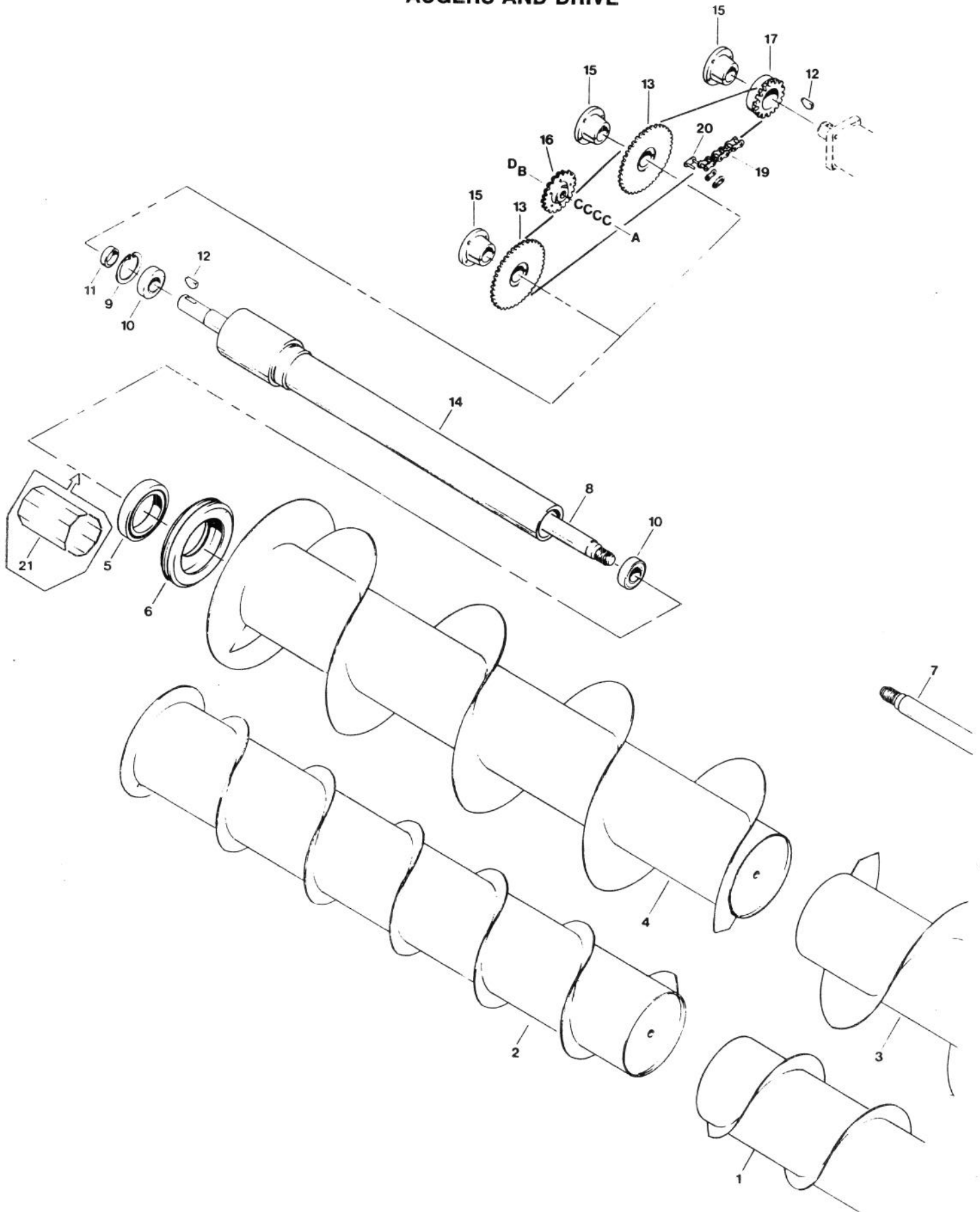
1. Read the Operator's Manual, and follow all safety instructions. If you do not have a manual, obtain one from your dealer.
2. Install reel drive shield. Shield is not provided with the reel.
3. Stay clear of moving parts.
4. Before servicing or adjusting the reel:
 - rest header on the ground.
 - fully lower, or securely block the reel.
 - stop engine and remove key.

* 38242

PICK-UP REEL

REF	PART NUMBER	DESCRIPTION	QTY	SERIAL NUMBER
A	30808	SCREW - machine, Phillips Truss Head, 5/16 NC x 3/8 inch		
B	30280	NUT - lock, flange head, 5/16 inch NC distorted thread		
C	REF	HARDWARE - mounting, see Mounting Package		
D	30228	NUT - lock, flange head, 3/8 inch NC distorted thread		
E	21484	BOLT - carriage head, 3/8 NC x 1 1/2 inch		
F	30712	BOLT - flange head, 3/8 NC x 2 1/2 inch (thread full)		
G	21569	CAPSCREW - hex head, 5/16 NC x 2 inch		
H	30504	CAPSCREW - flat Phillips Head, 80° csk. 5/16 NC x 1 1/2 inch		
J	21472	BOLT - carriage head, 3/8 NC x 3/4 inch		
K	30693	BOLT - flange head, 3/8 NC x 5/8 inch		
L	21282	BOLT - carriage head, 5/16 NC x 1 inch		
M	21578	CAPSCREW - hex head, 1/2 NC x 2 1/4 inch		
N	18697	NUT - lock, 1/2 inch NC distorted thread		

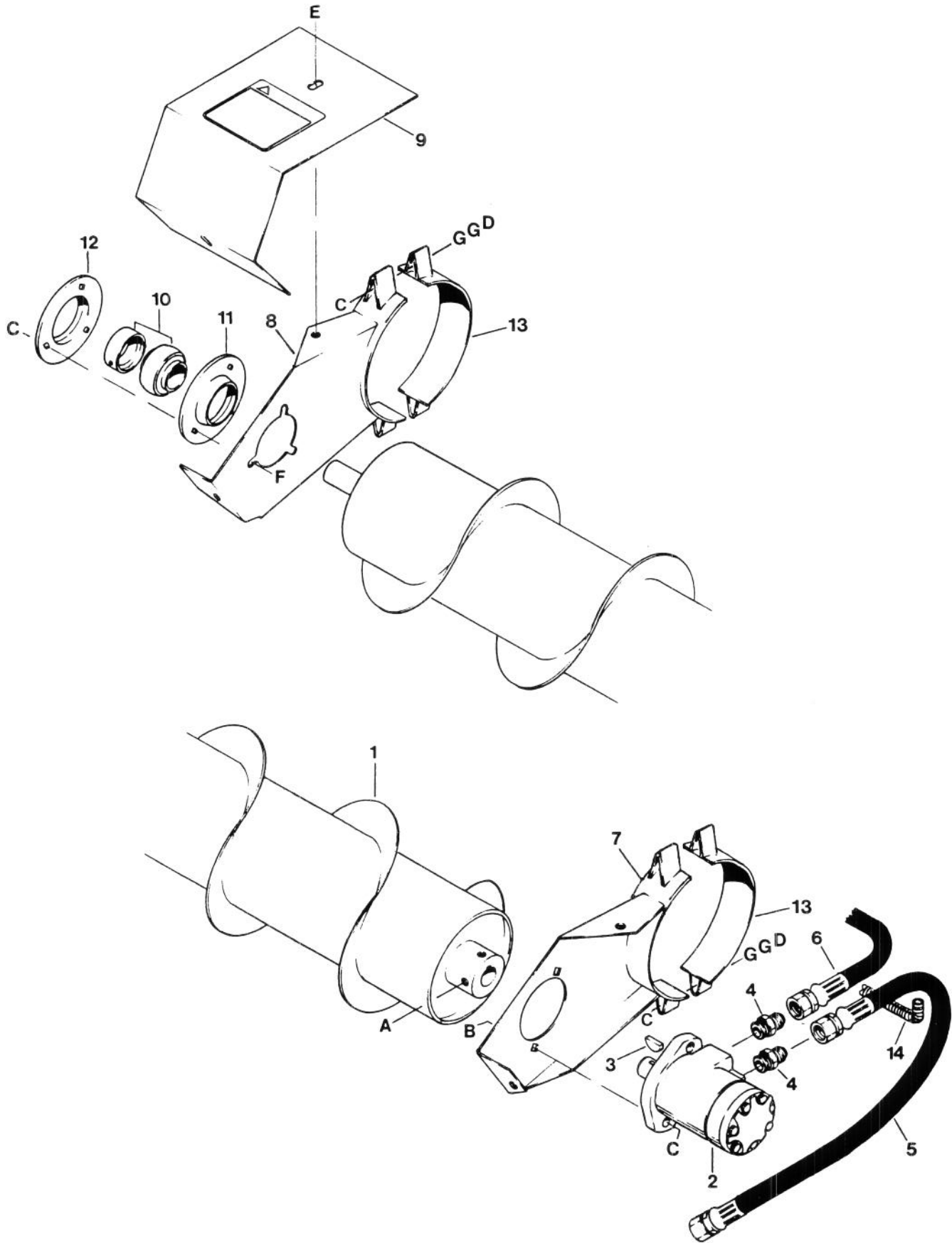
AUGERS AND DRIVE



AUGERS AND DRIVE

REF	PART NUMBER	DESCRIPTION	QTY	SERIAL NUMBER
1	38565	AUGER - left front, 12 ft. header	1	
	38566	AUGER - left front, 15 ft. header	1	
	38567	AUGER - left front, 18 ft. header	1	
2	38575	AUGER - right front, 12 ft. header	1	
	38576	AUGER - right front, 15 ft. header	1	
	38577	AUGER - right front, 18 ft. header	1	
3	38570	AUGER - left rear, 12 ft. header	1	
	38571	AUGER - left rear, 15 ft. header	1	
	38572	AUGER - left rear, 18 ft. header	1	
4	38580	AUGER - right rear, 12 ft. header	1	
	38581	AUGER - right rear, 15 ft. header	1	
	38582	AUGER - right rear, 18 ft. header	1	
5	50016	BEARING - ball	4	
6	38487	INSULATOR - rubber	4	
7	38091	SHAFT - left auger (R/H thread)	2	
8	38090	SHAFT - right auger (L/H thread)	2	
9	21235	RING - retaining, internal	4	
10	21310	BEARING - ball	8	
11	24416	SPACER - tube	4	
12	2149	KEY - woodruff, SAE #15	6	
13	38461	SPROCKET - auger	4	
14	38300	TUBE - auger support (weld to end panel)	4	
15	21148	BUSHING - split taper	6	
16	38193	SPROCKET - idler	2	
17	38192	SPROCKET - hydraulic motor, 15 tooth	2	-82885
	38223	SPROCKET - hydraulic motor, 17 tooth	2	82886-
19	38200	CHAIN - roller, RC40 x 111 links	2	
20	6632	LINK - connector, #40	2	
21	38514	BUSHING - half (2 required per auger)	8	-86399
A	21474	BOLT - round head square neck, 1/2 NC x 2 inch		
B	18638	WASHER - lock, 1/2 inch		
C	18600	WASHER - flat, 21/32 inch I.D.		
D	18591	NUT - hex, 1/2 inch NC		

UPPER CROSS AUGER (OPTION)



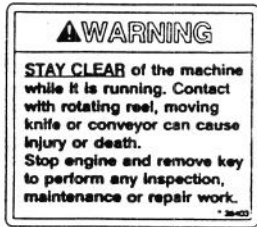
UPPER CROSS AUGER (OPTION)

REF	PART NUMBER	DESCRIPTION	QTY	SERIAL NUMBER
	B2209	UPPER CROSS AUGER KIT - 12 ft., complete		
	B2210	UPPER CROSS AUGER KIT - 15 ft., complete		
	B2211	UPPER CROSS AUGER KIT - 18 ft., complete		
1	38906	AUGER - upper cross, 12 ft.	1	
	38907	AUGER - upper cross, 15 ft.	1	
	38908	AUGER - upper cross, 18 ft.	1	
2	38688	MOTOR - hydraulic, includes key (item 3)	1	
	43177	SEAL KIT - for motor 38688		
3	2149	KEY - woodruff, SAE #15	1	
4	21881	FITTING - adapter, 1/2 tube x 7/8 O-ring	2	
5	38771	HOSE - lower port to left auger motor lower port	1	
6	REF	HOSE - conveyor drive pressure from left tractor leg	1	
7	38786	SUPPORT - left	1	
8	38785	SUPPORT - right	1	
9	38935	SHIELD - with decal	2	
10	21859	BEARING - ball, with collar	1	
11	30601	FLANGE - bearing	1	
12	30362	FLANGE - bearing, with lube fitting	1	
13	38899	CLAMP - mounting	2	
14	26671	PROTECTOR - hose	1	
A	18908	SCREW - set, square head, 3/8 NC x 1 inch		
B	19966	BOLT - round head square neck, 3/8 NC x 1 1/4 inch		
C	30228	NUT - lock, smooth flange, 3/8 NC distorted thread		
D	30080	BOLT - hex head, 3/8 NC x 4 1/2 inch, thread full length		
E	21821	BOLT - flange head, 3/8 NC x 3/4 inch		
F	19965	BOLT - round head square neck, 3/8 NC x 1 inch		
G	18598	WASHER - flat, 13/32 inch I.D.		

DECALS



2



3



4



5



6



7



8



9



10



11



12

940

15

multi~crop special

14

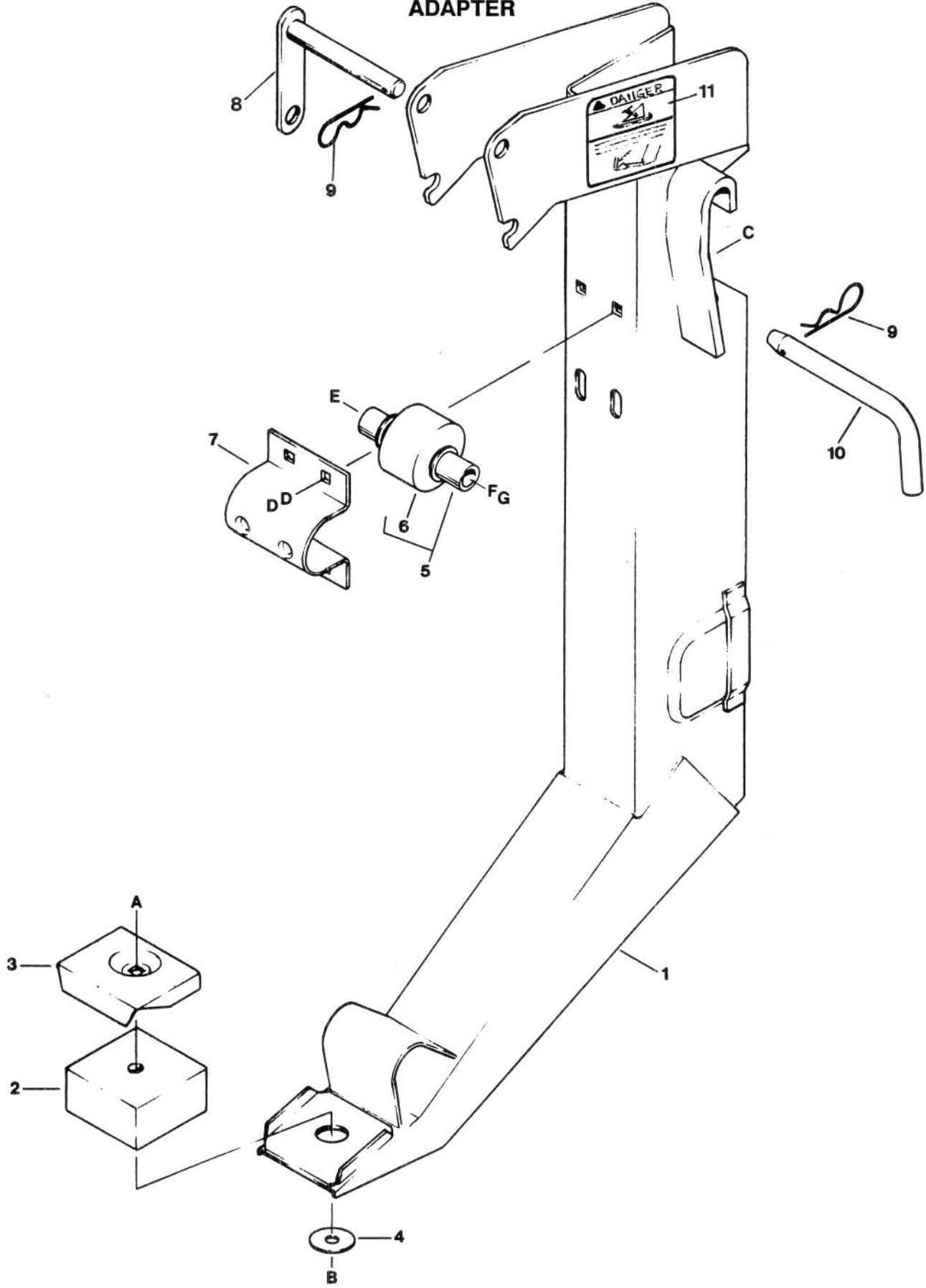
DECALS

REF	PART NUMBER	DESCRIPTION	QTY	SERIAL NUMBER
1	38399	DECAL - WARNING: Pinch Point		
2	42122	DECAL - WARNING: Reel Props		
3	28403	DECAL - WARNING: Clear While Running		
4	32738	DECAL - WARNING: Shields and Guards		
5	30316	DECAL - DANGER: Rotating Driveline		
6	23296	DECAL - LIFT HERE		
7	23163	DECAL - 10 HOUR GREASE		
8	23165	DECAL - 50 HOUR GREASE		
9	26697	DECAL - REFLECTOR, amber		
10	26694	DECAL - REFLECTOR, red		
11	43697	DECAL - LIFT TO RELEASE COVER		
12	43916	DECAL - RAINBOW with MacDon, L/H		
	43917	DECAL - RAINBOW with MacDon, R/H		
14	25895	DECAL - multi-crop special		
15	45411	DECAL - 940		

PAINT

REF	PART NUMBER	DESCRIPTION	QTY	SERIAL NUMBER
	23951	PAINT - black, aerosol spray		
	23955	PAINT - black, 1 litre		

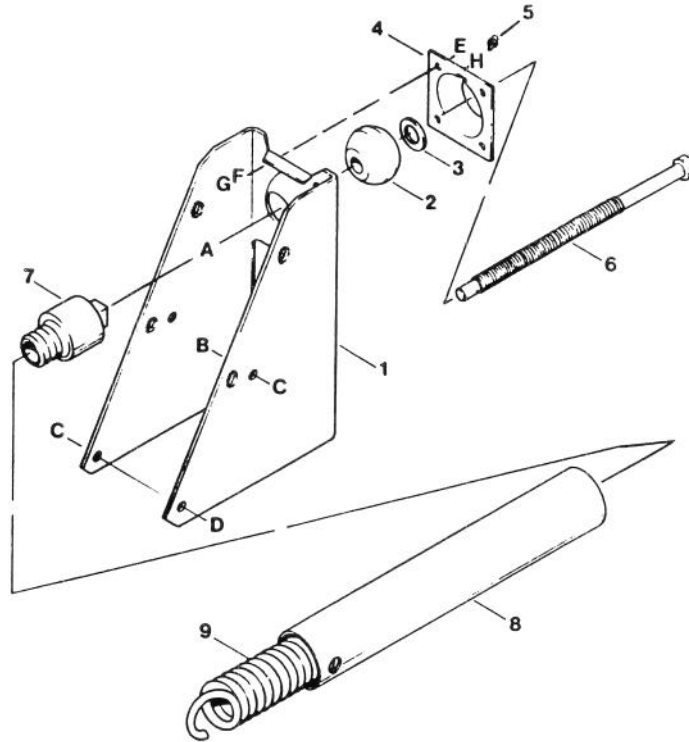
940 Header to 7000 Tractor ADAPTER



**940 Header to 7000 Tractor
ADAPTER**

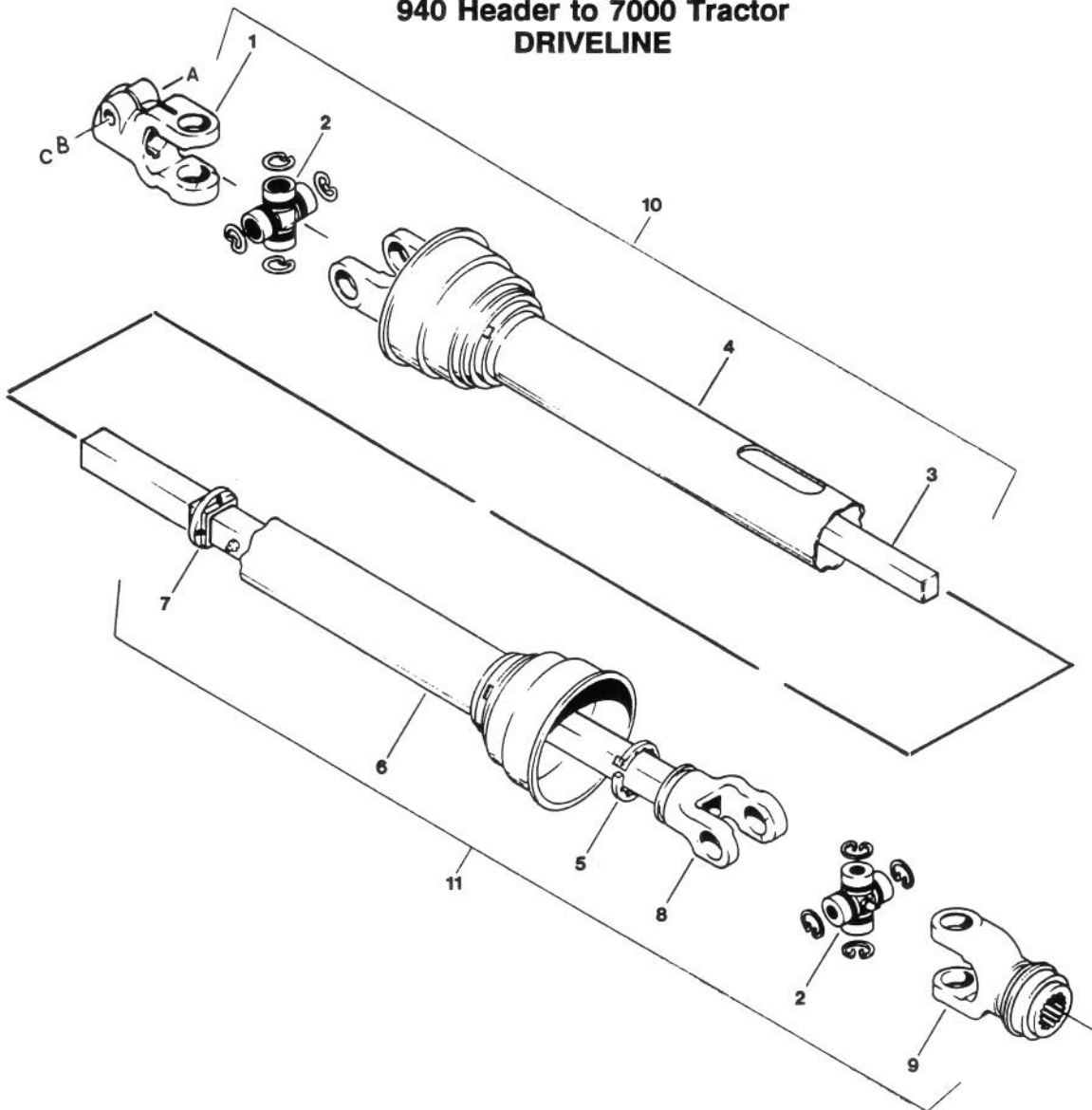
REF	PART NUMBER	DESCRIPTION	QTY	SERIAL NUMBER
1	43729	ADAPTER - linkage, with decal	2	
2	42498	PAD - rubber	2	
3	44575	PLATE - cover	2	
4	42592	WASHER - flat	2	
5	43742	BUSHING ASSEMBLY - includes item 6	2	
6	38489	BUSHING - rubber	2	
7	37618	RETAINER - bushing	2	
8	37616	PIN - spring retainer	4	
9	13125	PIN - hair	6	
10	32275	PIN - leg retainer	2	
11	44612	DECAL - DANGER: Lift Cylinder Stops	2	
A	30266	BOLT - round head, square neck 1/2 NC x 3 inch		
B	18697	NUT - lock, 1/2 NC distorted thread		
C	21474	BOLT - round head, square neck 1/2 NC x 2 inch		
D	18591	NUT - hex, 1/2 NC		
E	30015	BOLT - hex head, 5/8 NC x 7 inch		
F	18639	WASHER - lock, 5/8 inch		
G	18592	NUT - hex, 5/8 NC		

940 Header to 7000 Tractor
AUXILIARY FLOAT SPRING



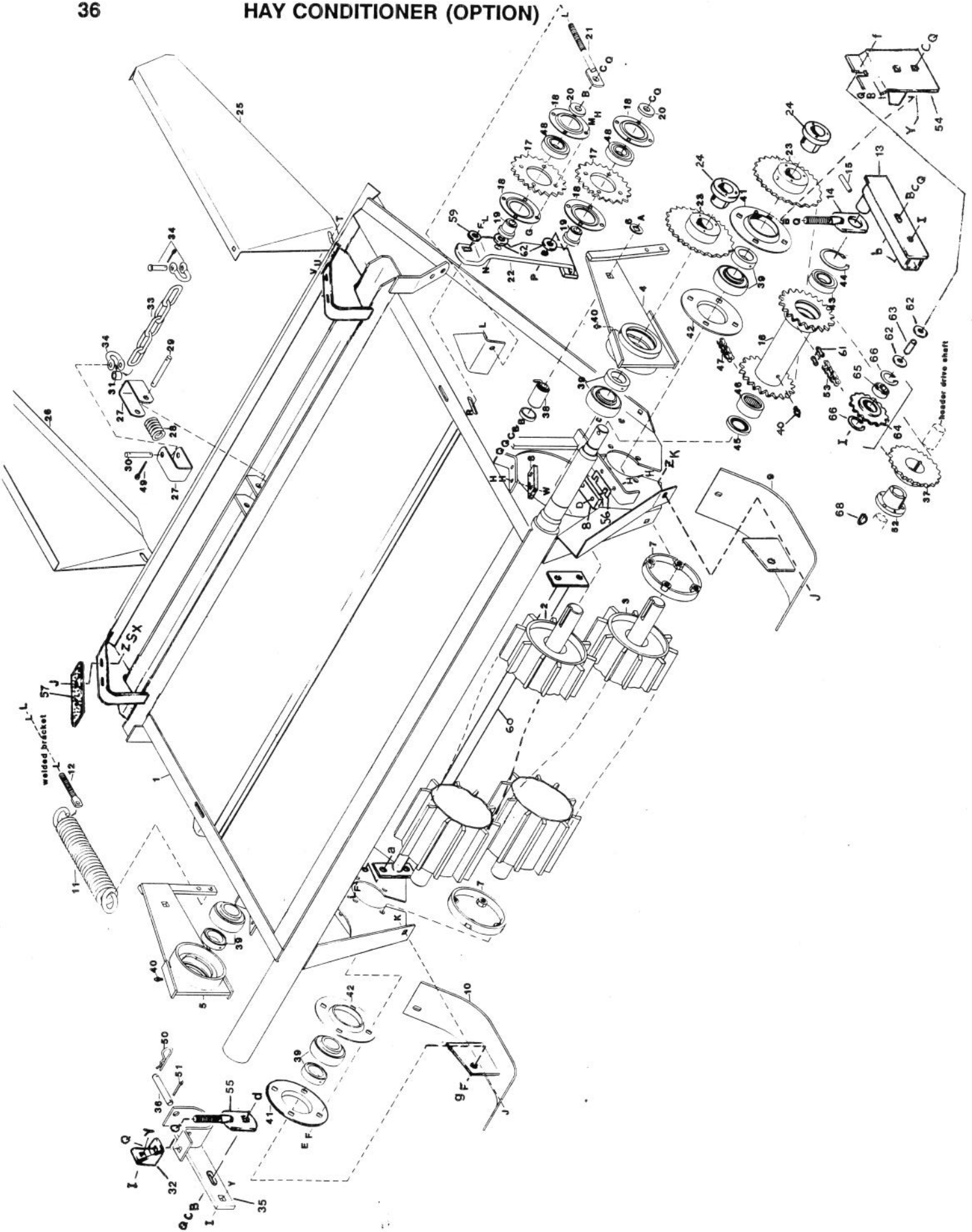
REF	PART NUMBER	DESCRIPTION	QTY	SERIAL NUMBER
1	33288	ANCHOR	1	
2	34651	BALL	1	
3	21540	WASHER - hardened	1	
4	34650	FLANGE - bearing, with lube fitting	1	
5	21299	FITTING - lube	1	
6	24934	DRAWBOLT - spring	1	
7	33275	INSERT - 2 1/4 inch O.D. spring	1	
	24322	INSERT - 3 3/4 inch O.D. spring	1	
8	33276	TUBE - for 2 1/4 inch O.D. spring	1	
	24536	TUBE - for 3 3/4 inch O.D. spring	1	
9	24319	SPRING - 2 1/4 inch O.D.	1	
	24320	SPRING - 3 3/4 inch O.D.	1	
A	21378	NUT - hex jam, 3/4 NC		
B	21575	BOLT - hex head, 1/2 NC x 1.0 inch		
C	18697	NUT - lock, 1/2 NC distorted thread		
D	30267	BOLT - hex head, 1/2 NC x 6.0 inch		
E	21558	BOLT - hex head, 5/16 NC x 3/4 inch		
F	18636	WASHER - lock, 5/16 inch		
G	18589	NUT - hex, 5/16 NC		
H	18798	WASHER - flat, 7/32 inch I.D.		

940 Header to 7000 Tractor
DRIVELINE



REF	PART NUMBER	DESCRIPTION	QTY	SERIAL NUMBER
1	30621	YOKE - clamp, tractor end	1	
2	30622	CROSS & BEARING KIT	2	
3		YOKE & SHAFT - not serviced, order item 10	1	
4	30620	SHIELD - outer, with decal	1	
5	30623	BEARING - shield, consists of two halves	2	
6	30619	SHIELD - inner	1	
7	30167	SUPPORT - shield	1	
8		YOKE & TUBE - not serviced, order item 11	1	
9	24779	YOKE - spline bore, 1 3/8 x 21 teeth, with slide collar	1	
10	34366	JOINT ASSEMBLY - male half, includes items 1,2,3,4,5	1	
11	24795	JOINT ASSEMBLY - female half, includes items 2,5,6,7,8,9	1	
••	24776	DRIVELINE - complete, includes items 10 and 11	1	
A	21880	BOLT - hex head, 1/2 NC x 2 3/4 inch		
B	18638	WASHER - lock, 1/2 inch		
C	18591	NUT - hex, 1/2 NC		

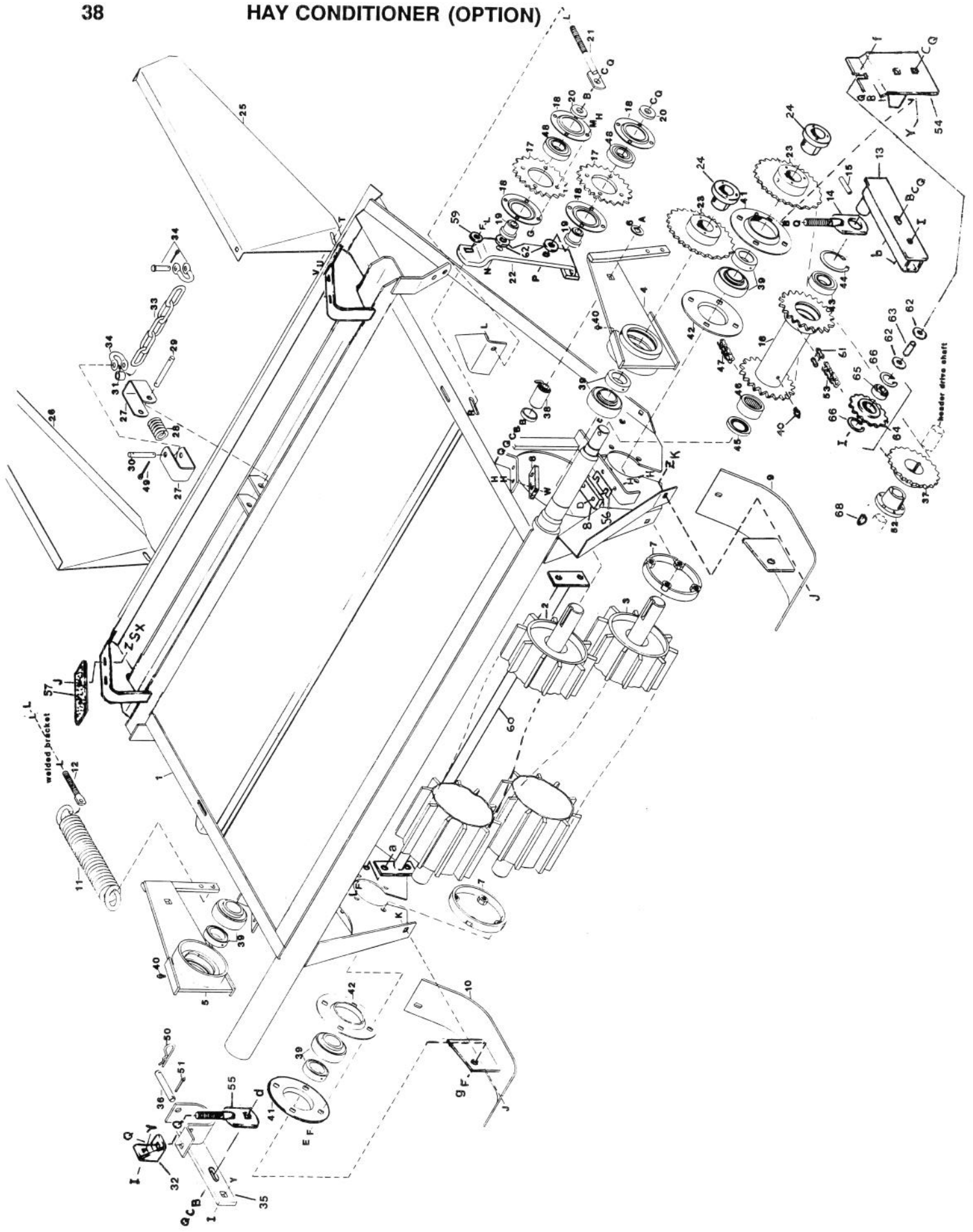
HAY CONDITIONER (OPTION)



HAY CONDITIONER (OPTION)

REF	PART NUMBER	DESCRIPTION	QTY	SERIAL NUMBER
1	28677	MAIN FRAME	1	
2	28531	TOP ROLL - L/H Helix	1	
3	28530	BOTTOM ROLL - R/H Helix	1	
<p>NOTE: Top and bottom roll may be reversed. When ordering, check the helix of the roll being replaced. Looking at the drive end of the roll, the L/H helix spirals counter-clockwise away from the end. The R/H helix spirals clockwise. There must be one L/H helix roll and one R/H helix, regardless of their position.</p>				
4	28640	L/H ARM	1	
5	28641	R/H ARM	1	
6	28308	FLAT WASHER	2	
7	28494	ANTI-WRAP BAND	2	
8	28484	BUMPER	4	
9	28802	L/H SKID SHOE	1	
10	28803	R/H SKID SHOE	1	
11	28480	SPRING	2	
12	28492	EYEBOLT	2	
13	47247	CHANNEL - L/H support	1	
14	28745	ROD	1	-86399
	47283	ROD - adjuster, L/H	1	86400-
15	16008	ROLL PIN 5/16 x 1.5 Lg.	1	
16	28656	SPROCKET ASSY.	1	
17	28482	SPROCKET	2	
18	28491	BEARING RETAINER	4	
19	28505	PIN	2	
20	22072	FLATWASHER	2	
21	28651	DRAW BOLT	1	
22	28796	SUPPORT	1	
23	28496	SPROCKET	2	
24	30256	TAPERED BUSHING	2	
25	28674	L/H DEFLECTOR SHIELD	1	
26	28675	R/H DEFLECTOR SHIELD	1	
27	28695	CLEVIS	2	
28	28700	SPRING	1	
29	28696	PIN	1	
30	28697	PIN	1	
31	10178	SPACER	1	
32	47259	SUPPORT - R/H	1	
33	47230	CHAIN	1	
34	28673	SHACKLE	2	
35	47274	R/H SUPPORT	1	
36	28699	PIN	1	
37	28486	SPROCKET	1	
38	13626	RUBBER BUSHING	2	
39	30031	BEARING C/W COLLAR	4	
40	7782	GREASE FITTING	3	
41	21374	RE-LUBE FLANGETTE C/W FITTING	2	
42	9211	FLANGETTE	2	
43	30090	BEARING	1	
44	30220	RETAINER RING	1	
45	30221	OIL SEAL	1	
46	5410	NEEDLE BEARING	1	
47	30092	CHAIN	1	
48	30090	BEARING	2	

HAY CONDITIONER (OPTION)



HAY CONDITIONER (OPTION)

REF	PART NUMBER	DESCRIPTION	QTY	SERIAL NUMBER
49	18608	COTTER PIN	4	
50	15380	HAIR PIN COTTER	1	
51	18606	COTTER PIN	1	
52	21934	TAPER LOCK BUSHING	1	
53	47305	ROLLER CHAIN - 71 links + 5 + 3	1	
54	47255	SUPPORT - L/H	1	-86399
	47298	SUPPORT - L/H	1	86400-
55	47261	ROD - adjuster, R/H	1	86400-
56	28703	SHIM	6	
57	28800	BUMPER	2	
59	18599	WASHER 17/32 I.D.	1	
60	28792	TUBE	1	
61	16659	CONNECTOR LINK #60 H	2	
62	18600	WASHER 21/32 I.D. (for shimming)	A/R	
63	47265	SPACER - tube	1	
64	9333	SPROCKET - idler, includes items 65 & 66	1	
65	9213	BEARING - ball	1	
66	795	RING - retaining	2	
68	11142	KEY - woodruff	1	
A	21162	5/8 NC x 4.5 Lg. Carriage Bolt		
B	18600	21/32 I.D. SAE Flatwasher		
C	18639	5/8 nom. I.D. Lockwasher		
D	21479	5/16 NC x 1.5 Lg. Carriage Bolt		
E	21491	1/2 NC x 1 1/4 Lg. Hex. Hd. Capscrew		
F	18638	1/2 nom. I.D. Lockwasher		
G	21087	5/16 NC x 1.0 Lg. Hex. Hd. Capscrew		
H	18589	5/16 NC Hex. Nut		
I	18666	5/8 NC Lock Nut		
J	19965	3/8 NC x 1.0 Lg. Carriage Bolt		
K	18669	3/8 NC Locknut		
L	18591	1/2 NC Hex. Nut		
M	18636	5/16 nom. I.D. Lockwasher		
N	21583	5/8 NC x 3.0 Lg. Hex. Hd. Capscrew		
P	21584	5/8 NC x 2 1/2 Lg. Hex. Hd. Capscrew		
Q	18592	5/8 NC Hex. Nut		
R	21469	1/2 NC x 1 1/2 Lg. Carriage Bolt		
S	18637	3/8 nom. I.D. Lockwasher		
T	21281	5/16 NC 3/4 Lg. Carriage Bolt		
U	18597	11/32 I.D. SAE Flatwasher		
V	21403	5/16 NC Flange Nut		
W	21282	5/16 NC x 1.0 Lg. Carriage Bolt		
X	18590	3/8 NC Hex Nut		
Y	18523	5/8 x 1 1/2 Lg. Carriage Bolt		
Z	18598	13/32 I.D. SAE Flatwasher		
a	21471	1/2 NC x 1 1/4 Lg. Carriage Bolt		
b	18525	5/8 NC x 2 1/2 Lg. Carriage Bolt		
d	18524	5/8 NC x 2 Lg. Carriage Bolt		
f	21762	5/8 NC x 3 Lg. Short Neck Carriage Bolt		
g	18723	1/2 NC x 1 1/2 Lg. Hex Hd. Capscrew		

NUMERICAL LIST

<u>PART NO.</u>	<u>PAGE</u>	<u>PART NO.</u>	<u>PAGE</u>	<u>PART NO.</u>	<u>PAGE</u>	<u>PART NO.</u>	<u>PAGE</u>
795	39	21517	17	27168	23	30601	29
2149	9,27	21519	17	27171	23	30602	13
4150	23	21520	17	27172	23	30617	35
5410	37	21540	34	27647	23	30618	35
6632	27	21545	19	27984	23	30619	35
7258	17	21712	17	27985	23	30620	35
7782	37	21713	17	28013	15	30621	35
7900	19	21714	17	28014	15	30622	35
7910	19	21715	17	28308	37	30623	35
8640	7,19	21716	17	28403	31	30668	15
9211	37	21763	7	28402	37	30814	17
9213	39	21855	9,11	28480	37	30815	17
9333	39	21856	9	28482	37	31062	3
10178	37	21857	9,11	28484	37	31824	7
11142	13,39	21858	9	28486	37	32116	7
13125	3,33	21859	28	28491	37	32225	7,11
13626	37	21862	15	28492	37	32275	3,33
13747	3	21865	15	28494	37	32738	31
15380	39	21876	7	28496	37	33275	34
15616	7	21878	7	28505	37	33276	34
16008	37	21881	11,29	28530	37	33288	34
16235	19	21887	17,27	28531	37	33426	7
16539	3	21934	13,39	28640	37	33532	19
16659	39	21936	13	28641	37	34364	13
16661	3	21938	13	28651	37	34366	35
18599	39	22072	37	28656	37	34388	15
18600	39	23163	31	28673	37	34389	15
18606	39	23165	23,31	28674	37	34390	15
18608	39	23296	31	28675	37	34391	15
18648	7,15,19	23951	31	28677	37	34625	3
18671	21,23	23955	31	28695	37	34650	34
18689	17	24137	7	28696	37	34651	34
18738	7	24319	34	28697	37	W34897	9,11
19681	19	24320	34	28699	37	35012	23
19809	19	24322	34	28700	37	35017	23
19958	19	24416	27	28703	39	35058	23
20117	19	24536	34	28745	37	35064	23
21010	13	24776	35	28792	39	35070	23
21024	17	24779	35	28796	37	35171	21
21054	15	24795	35	28800	39	35243	23
21148	27	24934	34	28802	37	35281	23
21235	27	25059	3	28803	37	35282	23
21299	34	25298	11	28815	15	35396	23
21310	27	25895	31	29168	7	35397	23
21374	37	26318	17	29169	7	35558	21
21417	17	26319	17	29934	7,11	35564	21
21418	15	26320	17	30031	37	35655	23
21420	17	26321	15	30090	37	35659	23
21421	17	26446	19	30092	37	35660	23
21424	17	26671	29	30167	35	35661	23
21425	17	26694	31	30220	37	35679	23
21429	17	26697	31	30221	37	35680	23
21494	7	26846	19	30256	37	35681	23
21495	7	26847	19	30282	7	35688	23
21512	17	26848	19	30316	31	35689	23
21513	17	27160	21	30357	9	35694	21
21514	17	27166	23	30362	13	35767	23
21516	17	27167	23	30442	7	35768	23

NUMERICAL LIST

<u>PART NO.</u>	<u>PAGE</u>	<u>PART NO.</u>	<u>PAGE</u>	<u>PART NO.</u>	<u>PAGE</u>	<u>PART NO.</u>	<u>PAGE</u>
35787	21	38575	27	47133	7		
35791	21	38576	27	47134	7		
37336	19	38577	27	47135	11		
37345	7	38580	27	47136	11		
37367	3	38581	27	47137	11		
37616	33	38582	27	47138	11		
37618	33	38632	15	47139	11		
37866	19	38633	15	47140	11		
37869	19	38634	15	47141	11		
37919	19	38688	29	47142	11		
37948	19	38719	3	47143	11		
38021	3	38737	3	47146	9		
38090	27	38748	3	47147	11		
38091	27	38749	3	47148	11		
38137	5	38771	29	47149	11		
38138	5	38776	9	47159	3		
38139	5	38777	9	47162	3		
38192	27	38778	9	47163	3		
38193	27	38785	29	47167	19		
38200	27	38786	29	47230	37		
38223	27	38894	3	47247	37		
38276	5	38899	29	47255	39		
38300	27	38906	29	47259	37		
38370	7	38907	29	47261	39		
38371	7	38908	29	47265	39		
38372	7	38935	29	47274	37		
38373	7	40336	9	47283	37		
38394	3	42122	31	47298	39		
38395	3	42498	33	47305	39		
38399	31	42592	33	47322	3		
38401	3	43010	11	47325	3		
38402	3	43011	9	48008	23		
38403	3	43177	9,11,29	48009	23		
38409	9	43219	19	48010	23		
38461	27	43446	13	48020	23		
38468	5	43447	13	48023	23		
38477	5	43448	13	50016	27		
38478	5	43464	19	50082	9,11		
38487	27	43617	9	50083	7		
38489	33	43618	9	B2209	29		
38500	3	43648	3	B2210	29		
38504	5	43689	19	B2211	29		
38505	5	43697	31				
38506	3	43711	3				
38512	5	43729	33				
38513	5	43742	33				
38514	27	43916	31				
38517	3	43917	31				
38520	5	44575	33				
38521	5	44612	33				
38523	3	45153	9				
38565	27	45411	31				
38566	27	47009	9,11				
38567	27	47041	15				
38568	13	47076	3				
38570	27	47100	3				
38571	27	47130	15				
38572	27	47132	7				

MacDon
Designed to Deliver!

46019 Issue 2/94
Sugg. Retail: \$15.00

Printed in Canada