

**Model 973/974/2052/2062 Draper Header  
TOOL BOX (B4400)  
INSTALLATION INSTRUCTIONS**

This instruction explains how to instruct the Tool Box kit (MD #B4400). A list of parts included in the kit is provided.

**NOTE:** Keep your MacDon publications up-to-date. The most current version of this instruction can be downloaded from our Dealer-only site (<https://portal.macdon.com>) (login required).

**NOTE:** This instruction is only available in English.

**Installation Time**

Installation time is approximately 20 minutes.

**Conventions**

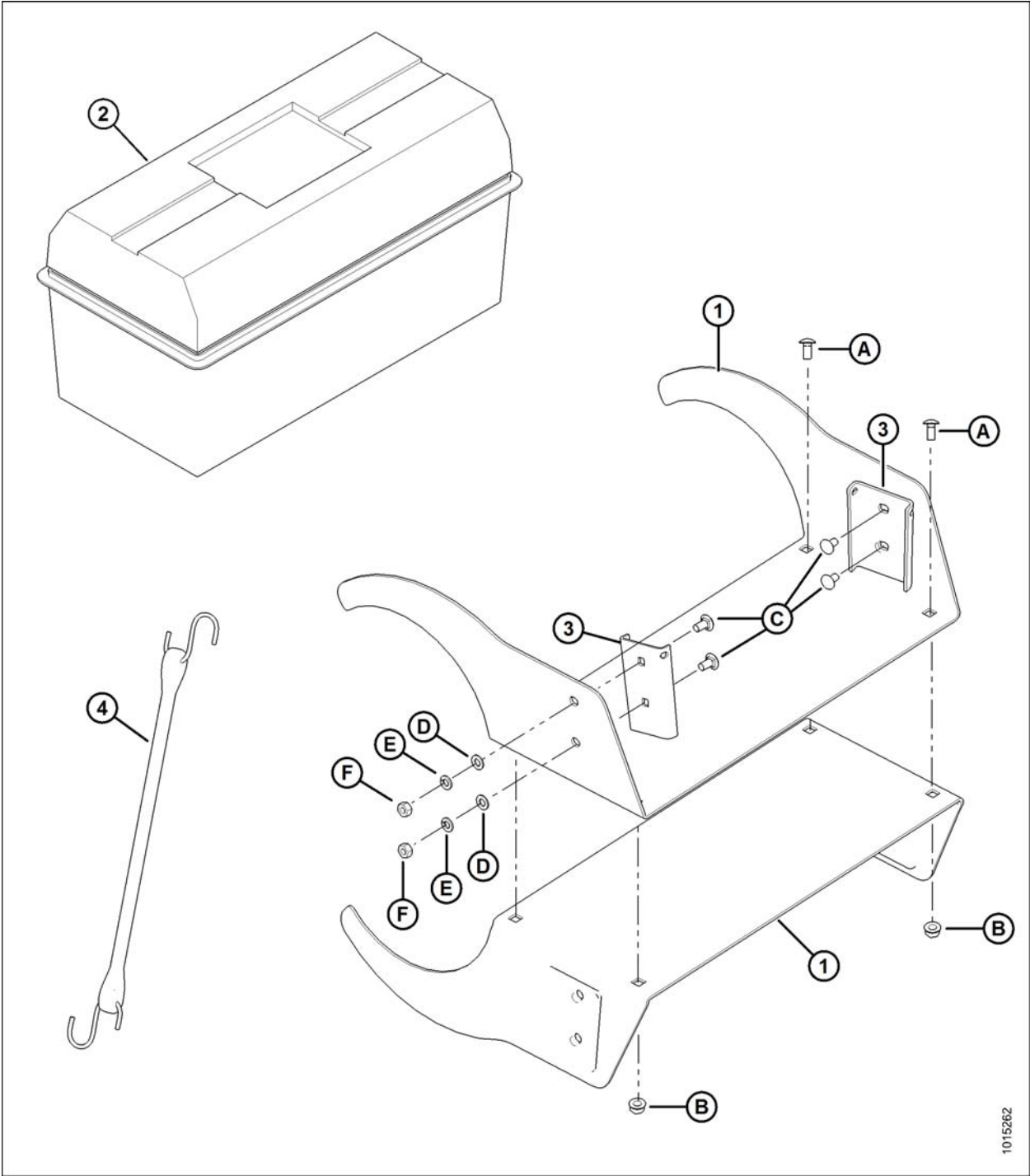
The following conventions are followed in this document:

- Right- and left-hand are determined from the operator's position. The front of the header is the side that faces the crop.
- Unless otherwise noted, use the standard torque values provided in the header operator's manual and technical manual.

**Model 973/974/2052/2062 Draper Header  
TOOL BOX (B4400)  
INSTALLATION INSTRUCTIONS**

**Part List**

This kit includes the following parts:



**Figure 1: Parts Included in Tool Box Kit**

**Model 973/974/2052/2062 Draper Header  
TOOL BOX (B4400)  
INSTALLATION INSTRUCTIONS**

<b>Ref</b>	<b>Part Number</b>	<b>Description</b>	<b>Quantity</b>
1	158119	CLAMP/BRACKET	2
2	NSS <sup>1</sup>	TOOL BOX WITH TRAY	1
	279148	KIT – TRANSITION TOOL BOX (contains 3, 4, C, D, E, F)	1
3	NSS	CHANNEL – TRANSITION TOOL BOX	2
4	NSS	STRAP – RUBBER	1
A	21863	BOLT – RHHSN 3/8 NC X 3/4 IN LG GR 5 ZP	4
B	30228	NUT – FLANGE DT SMOOTH FACE 0.375-16 UNC	4
C	191489	BOLT – RHSSN TFL M8 X 1.25 X 16-8.8-A2L	4
D	184708	WASHER – FLAT M8-200HV-A2L	4
E	30716	WASHER – LOCK SPRING M8-CS-1055-1065-A2L	4
F	184687	NUT – HEX M8 X 1.25-8-A2L	4

---

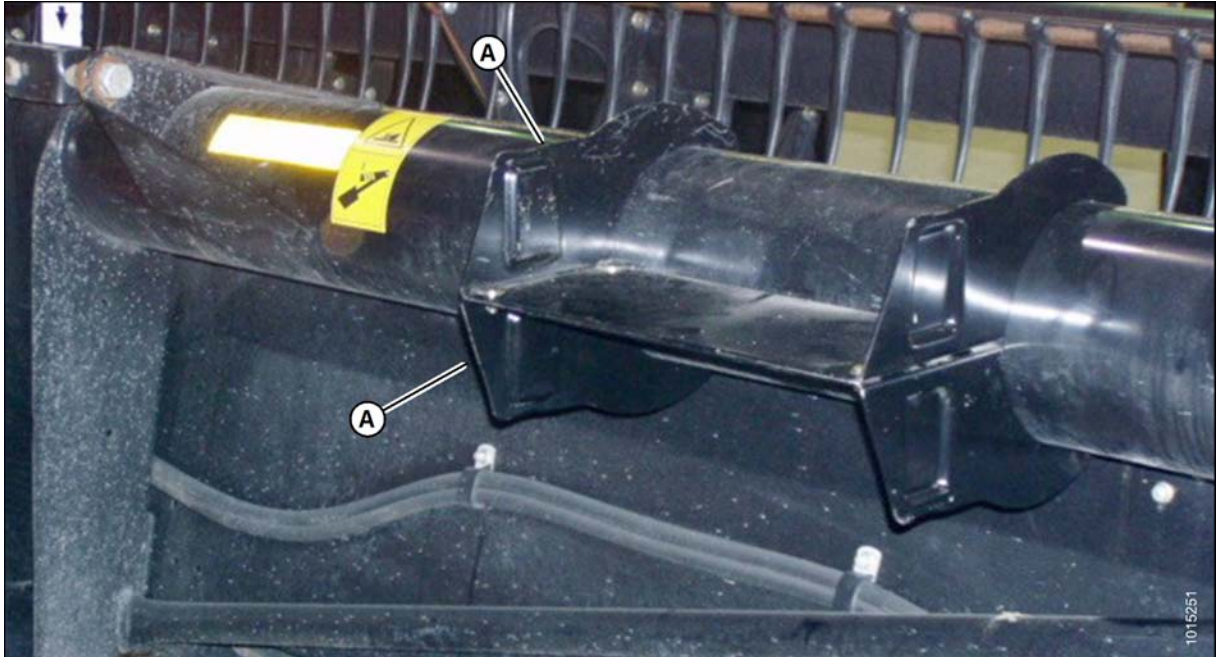
<sup>1</sup> Not sold separately.

**Model 973/974/2052/2062 Draper Header  
TOOL BOX (B4400)  
INSTALLATION INSTRUCTIONS**

**Installation Instructions**

To install the tool box, follow these steps:

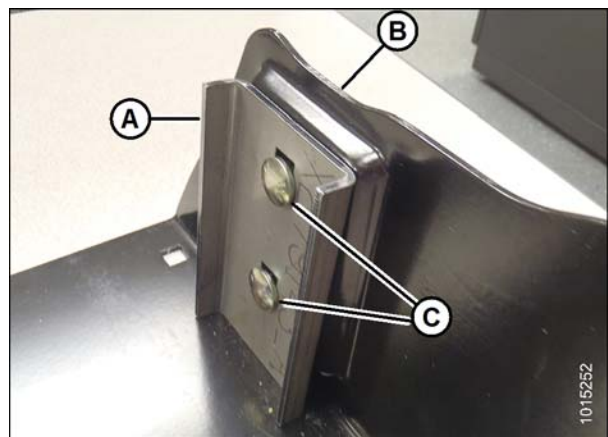
1. Position brackets (A) on the right-hand side of the header main tube, as close to the center of the header as possible without interfering with any decals. This is especially important with flex headers, where positioning the box too far outboard may affect wing balance.
2. Secure brackets (A) in place using the four 3/4 in. long carriage bolts (MD #21863) and flange nuts (MD #30228) provided in the kit. Install the carriage bolts from the topside of the bracket.



**Figure 2: Brackets Installed on Header**

3. Install channels (A) (provided in the kit) on the inner sides of the top bracket (B) as shown at right. Secure in place with the four 16 mm long carriage bolts (MD #191489) (C), flat washers (MD #184708), lock spring washers (MD #30716), and hex nuts (MD #184687) also provided in the kit.

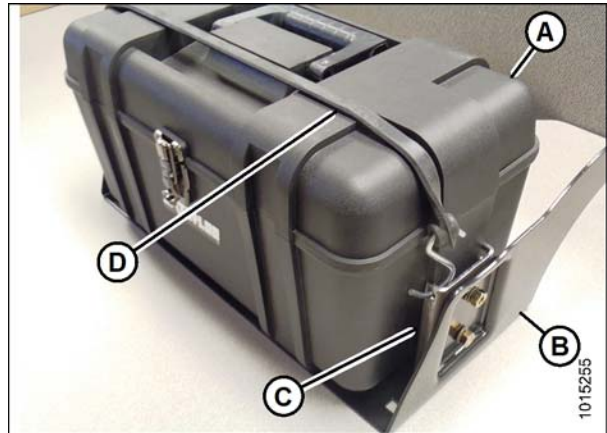
**NOTE:** Figure 1 on page 3 shows where the washers should be installed.



**Figure 3: Channel Attached to Bracket**

**Model 973/974/2052/2062 Draper Header  
TOOL BOX (B4400)  
INSTALLATION INSTRUCTIONS**

4. Slide the toolbox (A) (provided in the kit) down into the top bracket (B), in between the two channels (C) as shown at right.
5. Attach the hooks on the rubber strap (D) (provided in the kit) to the holes in the tops of the two channels (C) as shown at right.



**Figure 4: Tool Box Installed in Top Bracket  
(Shown Separate from Header for Clarity)**